



# Neptune Road Improvements from Partin Settlement Road to US 192

FPID: 445415-1

March 2019

Volume 2 of 4

Osceola County is evaluating improving Neptune Road, from Partin Settlement Road to US 192. This Project Development and Environment (PD&E) Study will evaluate various alternative improvements and their impacts to the physical, natural, social, and cultural environments.

A Public Alternatives Meeting is scheduled for April 11, 2019, from 5:30 pm to 7:00 pm, at the Osceola County Administrative Building Commission Chambers (4th floor). The purpose of this meeting is to receive input on the alternatives being evaluated. More details on the back of this newsletter.



## Partin Settlement Road to Old Canoe Creek Road

Two alternatives are being evaluated for the section from Partin Settlement Road to Old Canoe Creek Road. Both alternatives include a 4-lane divided roadway with bicycle lanes and a multi-use path on both sides of the roadway.

**Alternative 1** assumes widening occurs primarily to the north side of Neptune Road, from Partin Settlement Road to west

of Ames Haven Road. **Alternative 2** assumes widening occurs primarily to the south side of Neptune Road, from Partin Settlement Road to west of Ames Haven Road. From Ames Haven Road to the canal, both alternatives include widening both sides of the road. East of the canal, both alternatives include widening to the south of the road.



## Old Canoe Creek Road to US 192

Two alternatives are being evaluated for the section from Old Canoe Creek Road to US 192.

**Alternative A** includes a 4-lane undivided road with a multi-use path on the north side of the road and a sidewalk on the south side of the road. This alternative is not expected to require additional right-of-way.

**Alternative B** includes a 5-lane road with a center two-way left turn lane, a multi-use path on the north side of the road and a sidewalk on the south side of the road. This alternative will need additional right-of-way on the north side of Neptune Road.



# ImproveNeptuneRoad.com

## WE NEED YOUR INPUT! at a Public Alternatives Meeting

**When:** Thursday, April 11, 2019  
5:30 pm to 7:00 pm  
Open House format

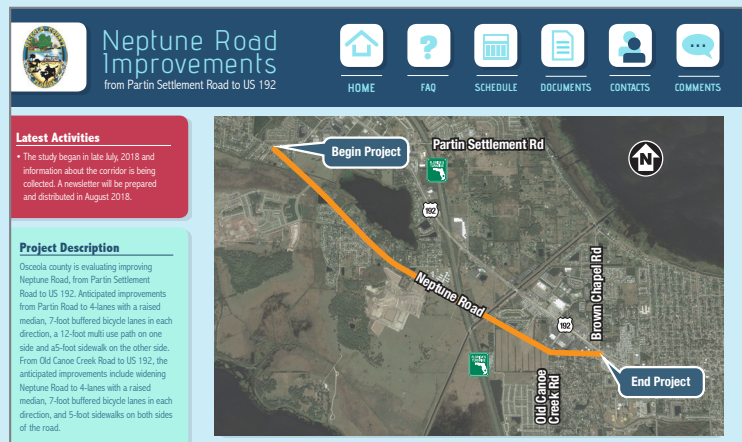
**Where:** Osceola County Administrative Building  
Commission Chambers (4th floor)  
1 Courthouse Square  
Kissimmee, Florida 34741



The Alternatives Public Information Meeting scheduled for April 11, 2019 will have an open house format and community members may come at any point during the meeting time to view the exhibits, ask questions and provide comments. A looping audiovisual presentation providing an overview of the study will be available for viewing throughout the meeting. Members of the public may submit written comments at the meeting or by contacting Mr. Joshua DeVries (contact information below). He may also be contacted by persons with disabilities who require special accommodations under the Americans with Disabilities Act (ADA) or persons who require translation services (free of charge) at least seven (7) days prior to the Alternatives Public Information Meeting.

## Project Website: ImproveNeptuneRoad.com

A project website has been created where you can find out about the latest study activities, see responses to frequently asked questions, see the current study schedule, view and download available project documents, see contact information, or submit comments. This website will be updated throughout the study and is the best location for obtaining information.



## Contact Information

If you have any questions, need more information, or would like for us to speak at your next community group or homeowner's association meeting, please contact us.

**Joshua DeVries, AICP**  
Director of Planning/Senior Planner  
Department of Transportation and Transit  
Osceola County Government  
1 Courthouse Square, Suite 3100  
Kissimmee, FL 34741  
Phone: 407-742-7813  
Joshua.DeVries@Osceola.org

**Clif Tate, PE**  
Consultant Project Manager  
Kimley-Horn and Associates, Inc.  
189 S. Orange Ave., Suite 1000  
Orlando, FL 32801  
Phone: 407-898-1511  
Clif.Tate@Kimley-Horn.com