



NEPTUNE ROAD WIDENING IMPROVEMENTS PROJECT

From Partin Settlement Road to SR 500 (US 192)

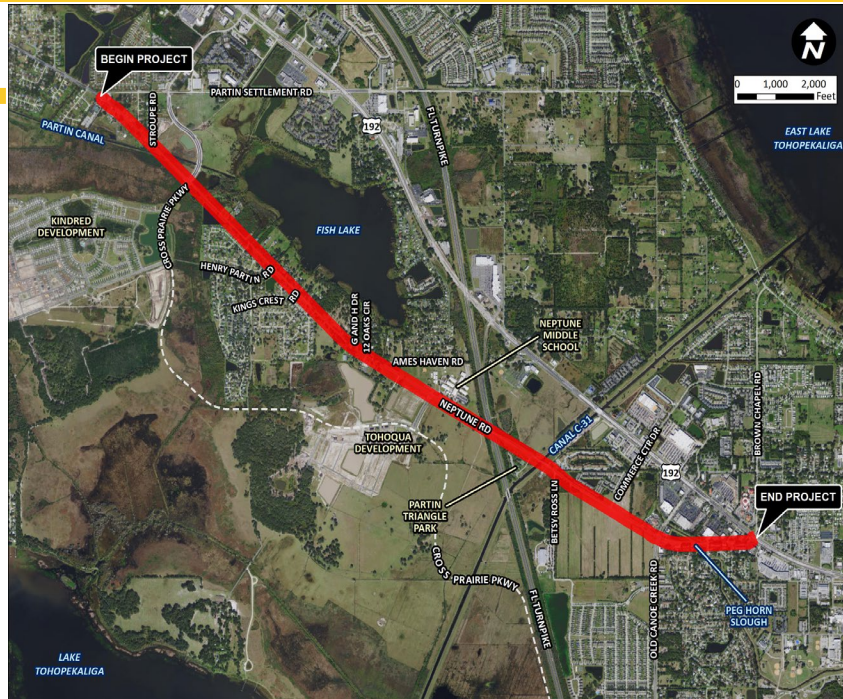
Osceola County, FL PS Number: PS-20-11312-DG

YOU ARE INVITED

DESIGN PUBLIC MEETING

You are invited to attend and participate in the Osceola County Public Meeting for the design of improvements to Neptune Road from Partin Settlement Road to SR 500 (US 192). This project is in the design phase and consistent with the recommendations resulting from the Neptune Road Project Development & Environment (PD&E) Study.

Osceola County is offering multiple ways for the community to take part in this Public Meeting. All participants, regardless of which platform they choose, will receive the same information and have access to the same presentation.



PROJECT LOCATION MAP

If you wish to participate in the public meeting by computer, tablet or mobile device, the **Virtual Public Meeting will begin at 6:00 p.m. on Thursday, April 15, 2021** and will include the same presentation offered at the in-person location. Project documents, including the video presentation, exhibits and comment form will be posted on Monday, April 12, 2021 at: www.Osceola.org/go/NeptuneRoad. Attendees in the virtual meeting will have an opportunity to download project displays and provide comments or ask questions. Advance registration is required for this option and can be accessed by going to:

<https://attendee.gotowebinar.com/register/4245734877514277646>

Please note that Go-To Webinar does not support Internet Explorer. You will need to use either Google Chrome (<https://google.com/chrome>) or Microsoft Edge (<https://microsoft.com/en-us/edge>) to register and participate in the virtual meeting.

If you wish to participate in person, the meeting will be held Thursday, April 15, 2021 in the St. Cloud Meeting Room at Osceola Heritage Park, located at 1875 Silver Spur Lane, Kissimmee, FL 34744. Attendees will have an opportunity to come anytime between 6:00 p.m. and 7:30 p.m. to view a looping presentation and project displays, speak with project team members, and provide comments. The County requests advance registration for this option by contacting the Project Manager (contact information at right) to ensure all attendees are accommodated safely and according to social distancing guidelines. Attendees will be required to wear masks and follow all safety protocols. Those who are not feeling well or are running a fever may not attend the in-person meeting.

Persons may also call into the meeting in listen only mode by dialing **631-992-3221** and entering the **passcode 501-992-310** when prompted. Persons choosing this option are encouraged to contact Project Manager, Daniel Kelly, by email or telephone as provided herein, after the meeting, to submit comments or ask questions.

Public participation is solicited without regard to race, color, national origin, age, sex, religion, disability, or family status. Persons who require special accommodations under the Americans with Disabilities Act (ADA) or persons who require translation services free of charge can contact Mr. Daniel Kelly, PE (contact information at right) at least seven (7) days prior to the Public Meeting.

ABOUT THE PROJECT

Osceola County is currently in the design phase for the Neptune Road Improvements Project. The need for the project is based on capacity and safety. The improvements, as determined by the Project Development and Environment (PD&E) Study, include development of design plans for construction and widening for approximately 3.98 miles.

Additionally, a four-lane divided urban roadway with designated bike lanes and sidewalks will be constructed, as will a bridge culvert over Fish Lake Canal and a bridge over the St. Cloud Canal. Landscaping and lighting will also be included to match the adjacent section of Partin Settlement Road.

CONTACT INFORMATION

If you have any questions or need additional information, please contact us at:

Daniel Kelly, PE
Project Manager
Osceola County BOCC
1 Courthouse Square
Suite 3100
Kissimmee, FL 34741
407-742-0533
daniel.kelly@osceola.org

Mark Owen, PE
Project Manager
GAI
618 E. South St.
Suite 700
Orlando, FL 32801
321-319-3121
m.owen@gaiconsultants.com