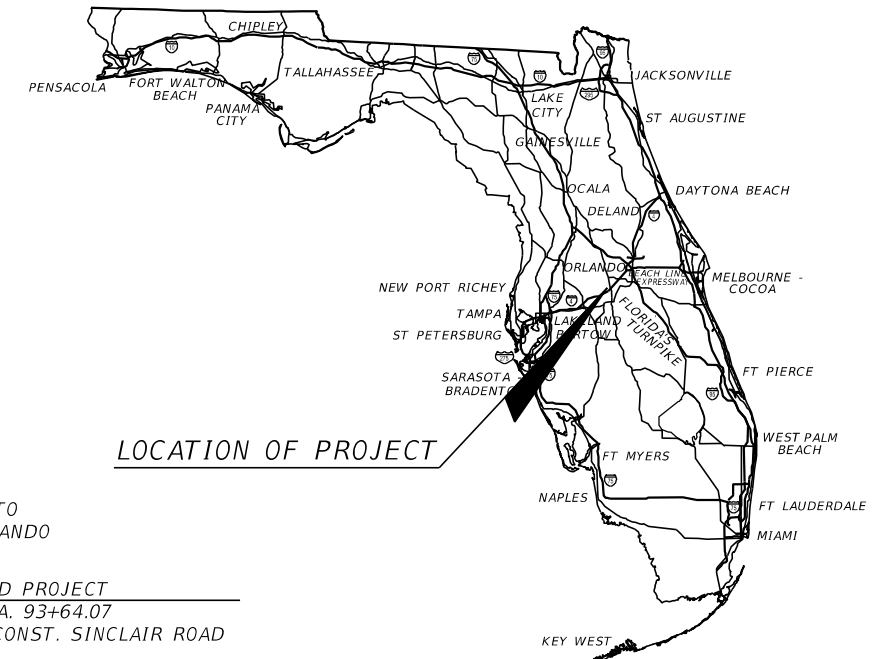


OSCEOLA COUNTY, FLORIDA
 TRANSPORTATION AND TRANSIT

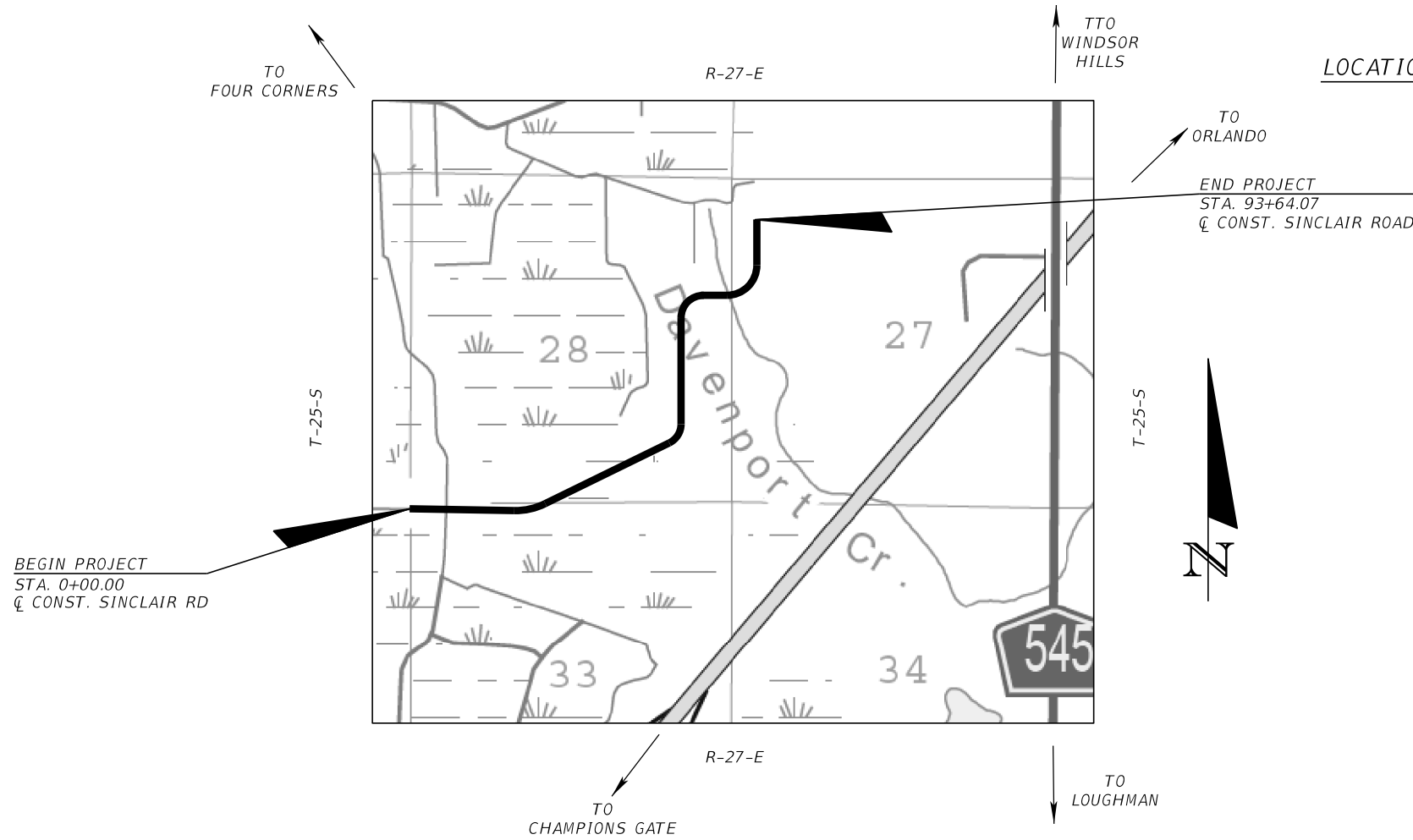
CONCEPT PLANS

SINCLAIR ROAD
 EXTENSION



INDEX OF CONCEPT PLANS

SHEET NO.	SHEET DESCRIPTION
1	KEY SHEET
2-6	TYPICAL SECTIONS
7-27	CONCEPT PLAN SHEETS



GOVERNING STANDARD PLANS:

Florida Department of Transportation, FY 2023-24 Standard Plans for Road and Bridge Construction and applicable Interim Revisions (IRs).

Standard Plans for Road Construction and associated IRs are available at the following website: <http://www.fdot.gov/design/standardplans>

GOVERNING STANDARD SPECIFICATIONS:

Florida Department of Transportation, Standard Specifications for Road and Bridge Construction FY 2023-24 at the following website: <http://www.fdot.gov/programmanagement/Implemented/SpecBooks>

FISCAL YEAR	SHEET NO.
23	1

PROJECT CONTROLS

CONTEXT CLASSIFICATION

- () C1 : NATURAL () C3C : SUBURBAN COMM.
- () C2 : RURAL () C4 : URBAN GENERAL
- () C2T : RURAL TOWN () C5 : URBAN CENTER
- (X) C3R : SUBURBAN RES. () C6 : URBAN CORE
- () N/A : L.A. FACILITY

FUNCTIONAL CLASSIFICATION

- () INTERSTATE (X) MAJOR COLLECTOR
- () FREEWAY/EXPWY. () MINOR COLLECTOR
- () PRINCIPAL ARTERIAL () LOCAL
- () MINOR ARTERIAL

HIGHWAY SYSTEM

- () NATIONAL HIGHWAY SYSTEM
- () STRATEGIC INTERMODAL SYSTEM
- () STATE HIGHWAY SYSTEM
- (X) OFF-STATE HIGHWAY SYSTEM

ACCESS CLASSIFICATION

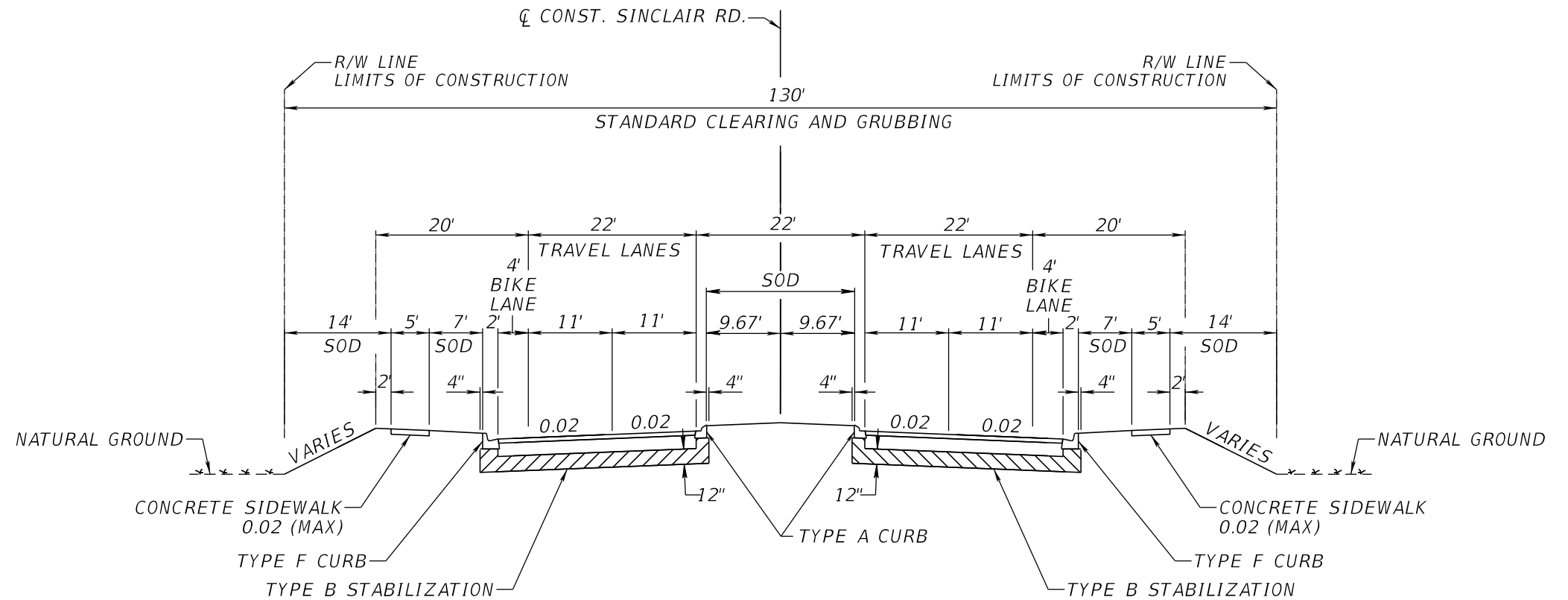
- () 1 - FREEWAY
- () 2 - RESTRICTIVE w/Service Roads
- () 3 - RESTRICTIVE w/660 ft. Connection Spacing
- () 4 - NON-RESTRICTIVE w/2640 ft. Signal Spacing
- (X) 5 - RESTRICTIVE w/440 ft. Connection Spacing
- () 6 - NON-RESTRICTIVE w/1320 ft. Signal Spacing
- () 7 - BOTH MEDIAN TYPES

CRITERIA

- (X) NEW CONSTRUCTION / RECONSTRUCTION
- () RESURFACING (LA FACILITIES)
- () RRR (ARTERIALS & COLLECTORS)

POTENTIAL EXCEPTIONS AND VARIATIONS RELATED TO TYPICAL SECTION:

TYPICAL SECTION No. 1



**TYPICAL SECTION
SINCLAIR ROAD**

DESIGN SPEED = 35 MPH

PROJECT CONTROLS

CONTEXT CLASSIFICATION

- () C1 : NATURAL () C3C : SUBURBAN COMM.
- () C2 : RURAL () C4 : URBAN GENERAL
- () C2T : RURAL TOWN () C5 : URBAN CENTER
- (X) C3R : SUBURBAN RES. () C6 : URBAN CORE
- () N/A : L.A. FACILITY

FUNCTIONAL CLASSIFICATION

- () INTERSTATE (X) MAJOR COLLECTOR
- () FREEWAY/EXPWY. () MINOR COLLECTOR
- () PRINCIPAL ARTERIAL () LOCAL
- () MINOR ARTERIAL

HIGHWAY SYSTEM

- () NATIONAL HIGHWAY SYSTEM
- () STRATEGIC INTERMODAL SYSTEM
- () STATE HIGHWAY SYSTEM
- (X) OFF-STATE HIGHWAY SYSTEM

ACCESS CLASSIFICATION

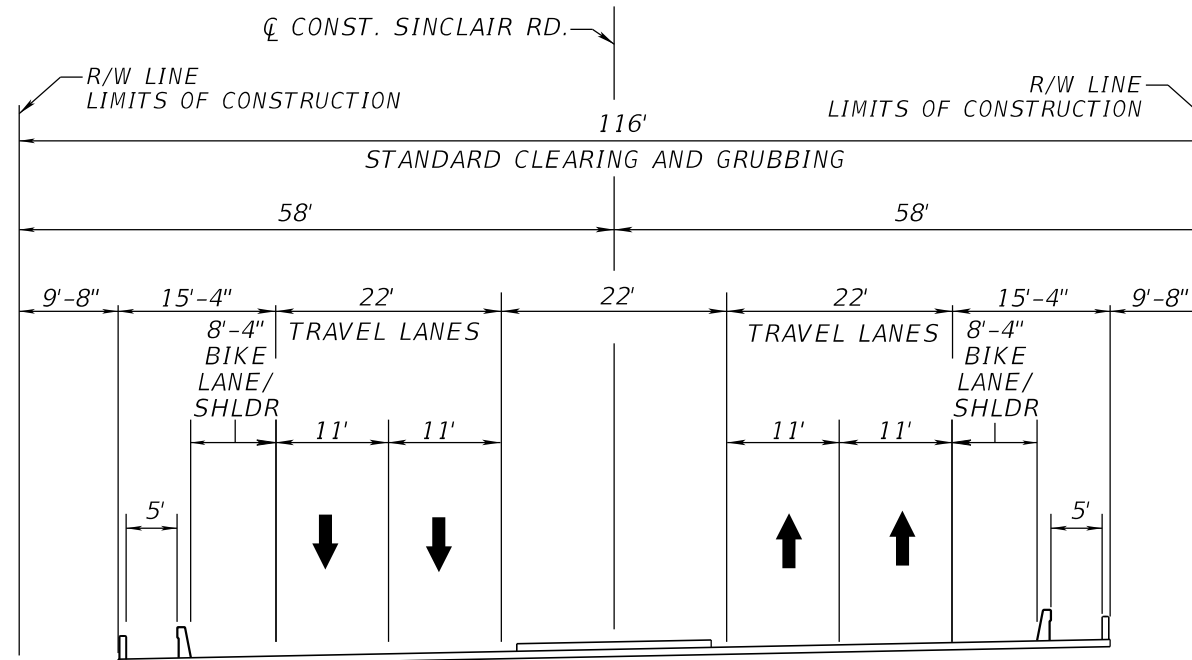
- () 1 - FREEWAY
- () 2 - RESTRICTIVE w/Service Roads
- () 3 - RESTRICTIVE w/660 ft. Connection Spacing
- () 4 - NON-RESTRICTIVE w/2640 ft. Signal Spacing
- (X) 5 - RESTRICTIVE w/440 ft. Connection Spacing
- () 6 - NON-RESTRICTIVE w/1320 ft. Signal Spacing
- () 7 - BOTH MEDIAN TYPES

CRITERIA

- (X) NEW CONSTRUCTION / RECONSTRUCTION
- () RESURFACING (LA FACILITIES)
- () RRR (ARTERIALS & COLLECTORS)

POTENTIAL EXCEPTIONS AND VARIATIONS RELATED TO TYPICAL SECTION:

TYPICAL SECTION No. 2



**BRIDGE TYPICAL SECTION
SINCLAIR ROAD**

DESIGN SPEED = 35 MPH

PROJECT CONTROLS

CONTEXT CLASSIFICATION

- () C1 : NATURAL () C3C : SUBURBAN COMM.
- () C2 : RURAL () C4 : URBAN GENERAL
- () C2T : RURAL TOWN () C5 : URBAN CENTER
- (X) C3R : SUBURBAN RES. () C6 : URBAN CORE
- () N/A : L.A. FACILITY

FUNCTIONAL CLASSIFICATION

- () INTERSTATE () MAJOR COLLECTOR
- () FREEWAY/EXPWY. (X) MINOR COLLECTOR
- () PRINCIPAL ARTERIAL () LOCAL
- () MINOR ARTERIAL

HIGHWAY SYSTEM

- () NATIONAL HIGHWAY SYSTEM
- () STRATEGIC INTERMODAL SYSTEM
- () STATE HIGHWAY SYSTEM
- (X) OFF-STATE HIGHWAY SYSTEM

ACCESS CLASSIFICATION

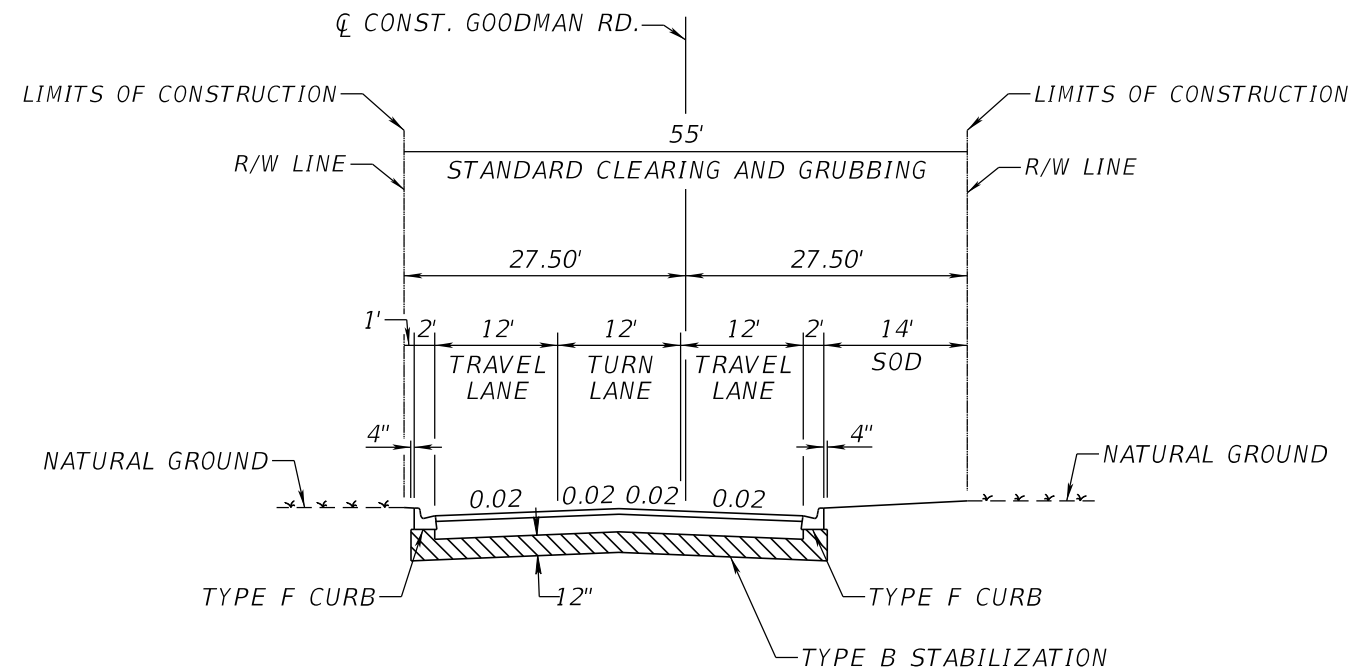
- () 1 - FREEWAY
- () 2 - RESTRICTIVE w/Service Roads
- () 3 - RESTRICTIVE w/660 ft. Connection Spacing
- () 4 - NON-RESTRICTIVE w/2640 ft. Signal Spacing
- () 5 - RESTRICTIVE w/440 ft. Connection Spacing
- (X) 6 - NON-RESTRICTIVE w/1320 ft. Signal Spacing
- () 7 - BOTH MEDIAN TYPES

CRITERIA

- (X) NEW CONSTRUCTION / RECONSTRUCTION
- () RESURFACING (LA FACILITIES)
- () RRR (ARTERIALS & COLLECTORS)

POTENTIAL EXCEPTIONS AND VARIATIONS RELATED TO TYPICAL SECTION:

TYPICAL SECTION No. 3



TYPICAL SECTION
GOODMAN ROAD
SOUTH OF SINCLAIR ROAD

DESIGN SPEED = 35 MPH

Proposed right-of-way lines are based on a conservative estimation approach at this time and may be adjusted during the design phase.

THE OFFICIAL RECORD OF THIS SHEET IS THE ELECTRONIC FILE DIGITALLY SIGNED AND SEALED UNDER RULE 61G15-23.004, F.A.C.

PROJECT CONTROLS

CONTEXT CLASSIFICATION

- () C1 : NATURAL () C3C : SUBURBAN COMM.
- () C2 : RURAL () C4 : URBAN GENERAL
- () C2T : RURAL TOWN () C5 : URBAN CENTER
- (X) C3R : SUBURBAN RES. () C6 : URBAN CORE
- () N/A : L.A. FACILITY

FUNCTIONAL CLASSIFICATION

- () INTERSTATE () MAJOR COLLECTOR
- () FREEWAY/EXPWY. (X) MINOR COLLECTOR
- () PRINCIPAL ARTERIAL () LOCAL
- () MINOR ARTERIAL

HIGHWAY SYSTEM

- () NATIONAL HIGHWAY SYSTEM
- () STRATEGIC INTERMODAL SYSTEM
- () STATE HIGHWAY SYSTEM
- (X) OFF-STATE HIGHWAY SYSTEM

ACCESS CLASSIFICATION

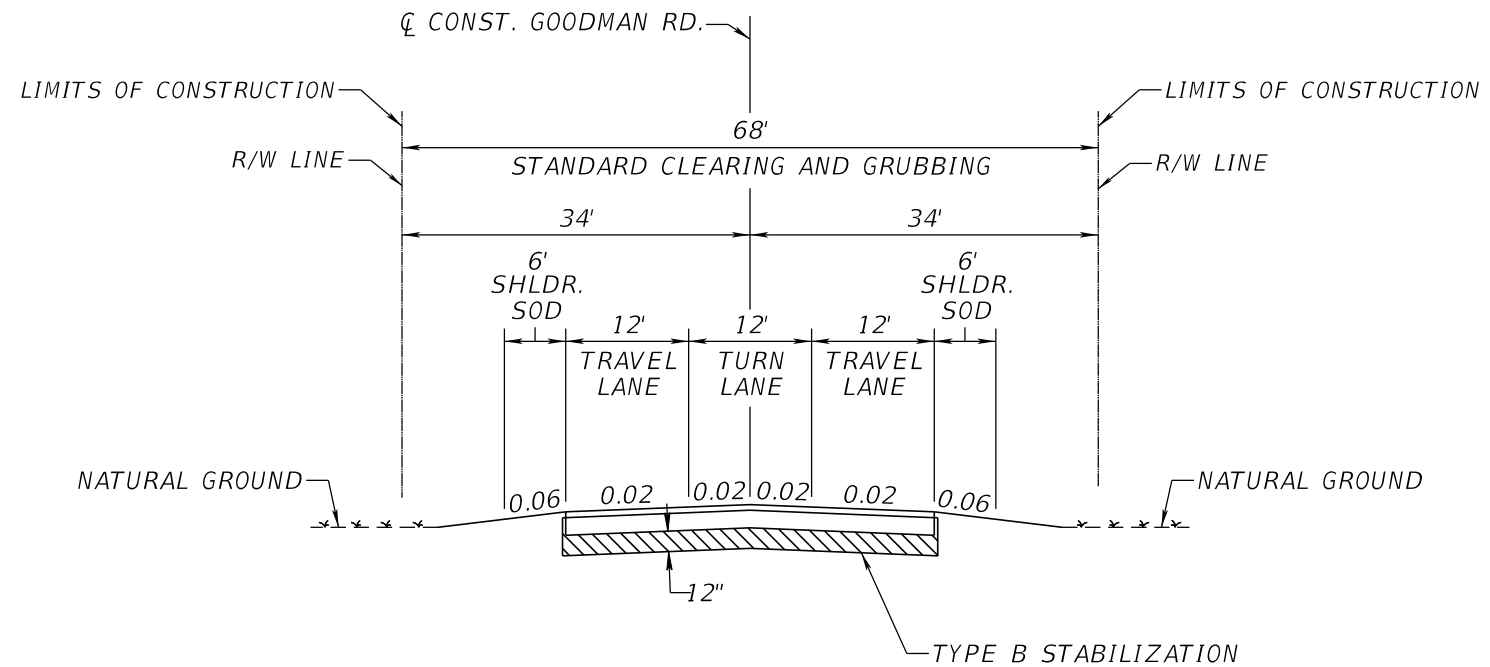
- () 1 - FREEWAY
- () 2 - RESTRICTIVE w/Service Roads
- () 3 - RESTRICTIVE w/660 ft. Connection Spacing
- () 4 - NON-RESTRICTIVE w/2640 ft. Signal Spacing
- () 5 - RESTRICTIVE w/440 ft. Connection Spacing
- (X) 6 - NON-RESTRICTIVE w/1320 ft. Signal Spacing
- () 7 - BOTH MEDIAN TYPES

CRITERIA

- (X) NEW CONSTRUCTION / RECONSTRUCTION
- () RESURFACING (LA FACILITIES)
- () RRR (ARTERIALS & COLLECTORS)

POTENTIAL EXCEPTIONS AND VARIATIONS RELATED TO TYPICAL SECTION:

TYPICAL SECTION No. 4



TYPICAL SECTION
GOODMAN ROAD
NORTH OF SINCLAIR ROAD

DESIGN SPEED = 35 MPH

PROJECT CONTROLS

CONTEXT CLASSIFICATION

- () C1 : NATURAL () C3C : SUBURBAN COMM.
- () C2 : RURAL () C4 : URBAN GENERAL
- () C2T : RURAL TOWN () C5 : URBAN CENTER
- (X) C3R : SUBURBAN RES. () C6 : URBAN CORE
- () N/A : L.A. FACILITY

FUNCTIONAL CLASSIFICATION

- () INTERSTATE () MAJOR COLLECTOR
- () FREEWAY/EXPWY. (X) MINOR COLLECTOR
- () PRINCIPAL ARTERIAL () LOCAL
- () MINOR ARTERIAL

HIGHWAY SYSTEM

- () NATIONAL HIGHWAY SYSTEM
- () STRATEGIC INTERMODAL SYSTEM
- () STATE HIGHWAY SYSTEM
- (X) OFF-STATE HIGHWAY SYSTEM

ACCESS CLASSIFICATION

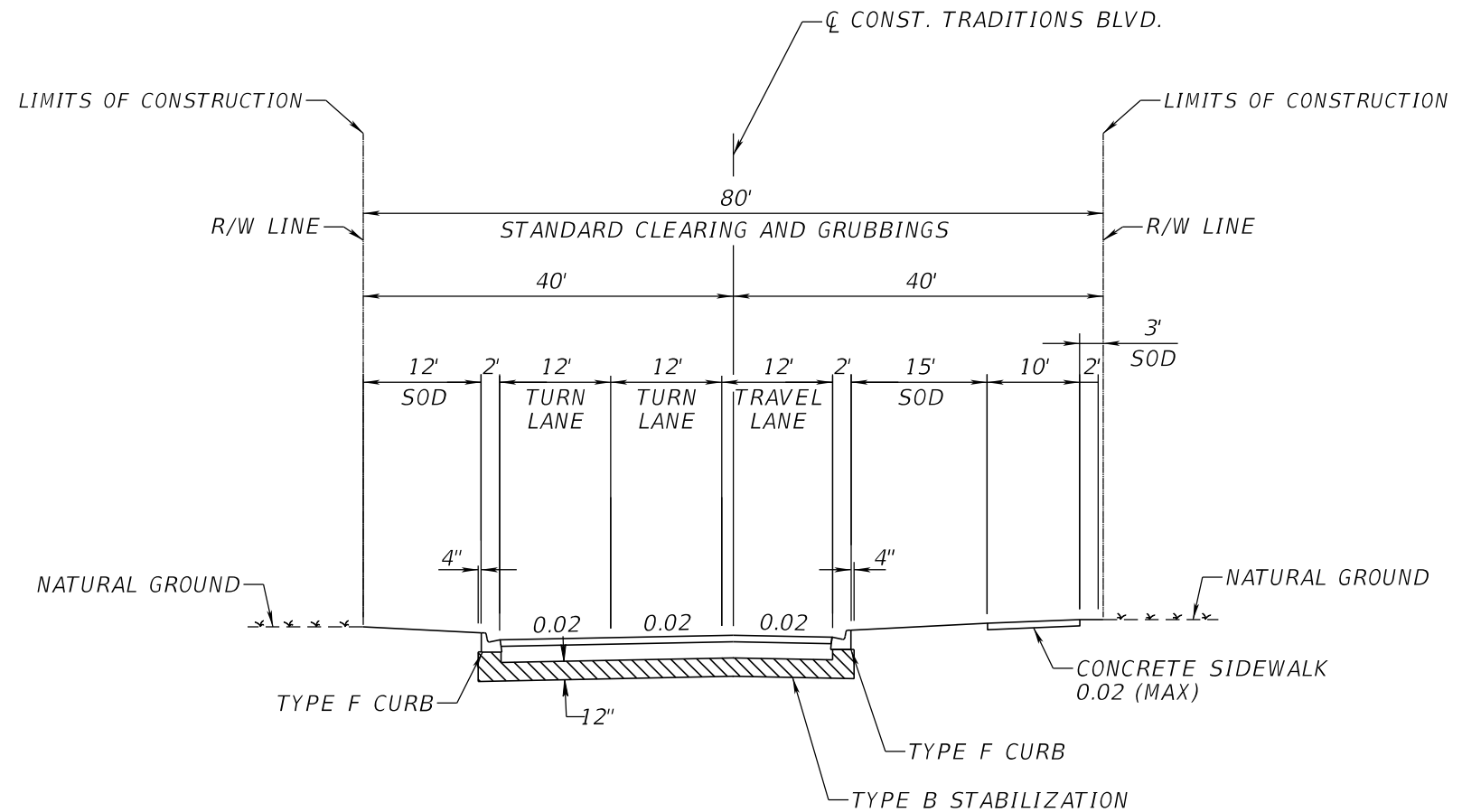
- () 1 - FREEWAY
- () 2 - RESTRICTIVE w/Service Roads
- () 3 - RESTRICTIVE w/660 ft. Connection Spacing
- () 4 - NON-RESTRICTIVE w/2640 ft. Signal Spacing
- () 5 - RESTRICTIVE w/440 ft. Connection Spacing
- (X) 6 - NON-RESTRICTIVE w/1320 ft. Signal Spacing
- () 7 - BOTH MEDIAN TYPES

CRITERIA

- (X) NEW CONSTRUCTION / RECONSTRUCTION
- () RESURFACING (LA FACILITIES)
- () RRR (ARTERIALS & COLLECTORS)

POTENTIAL EXCEPTIONS AND VARIATIONS RELATED TO TYPICAL SECTION:

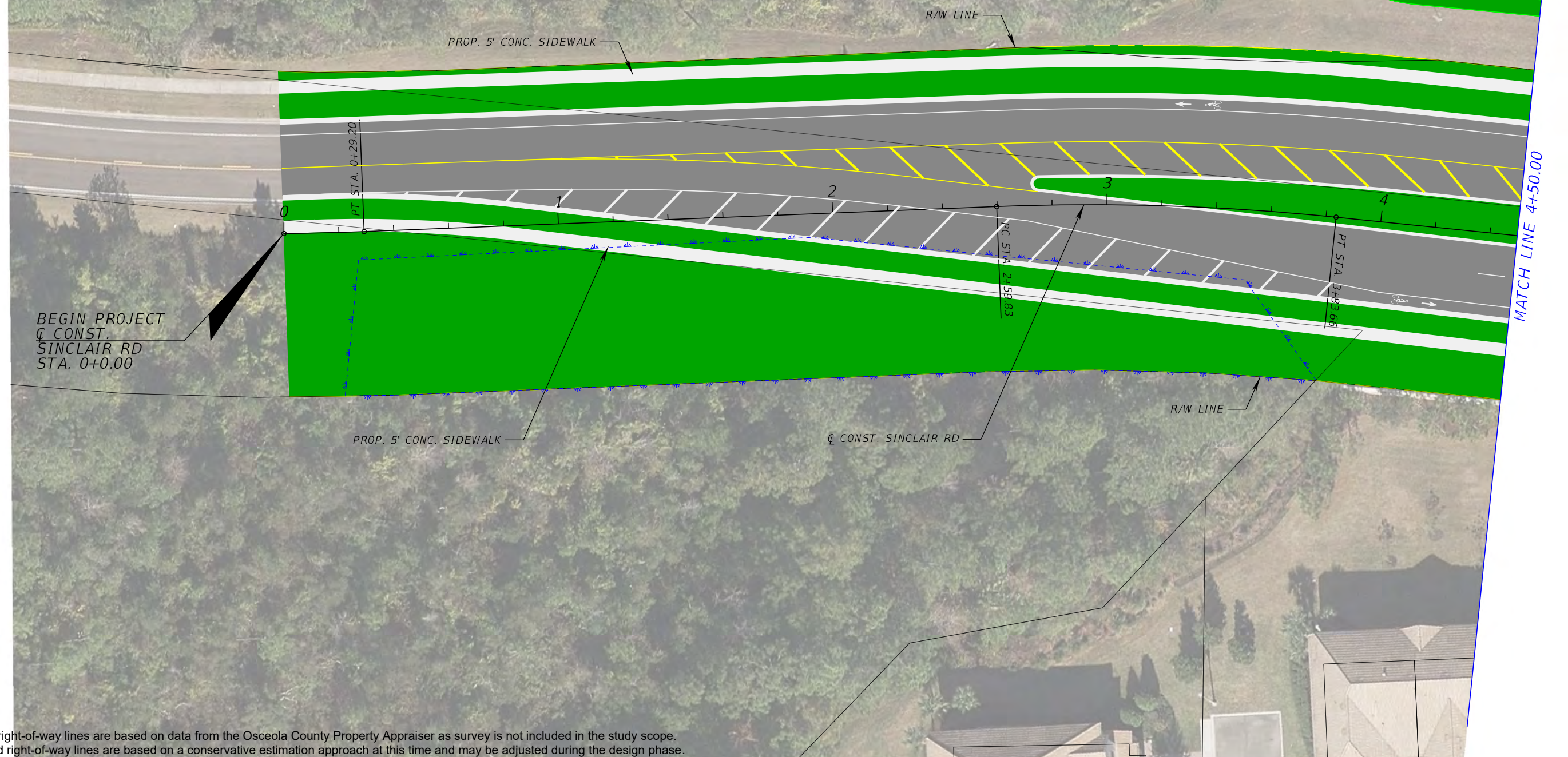
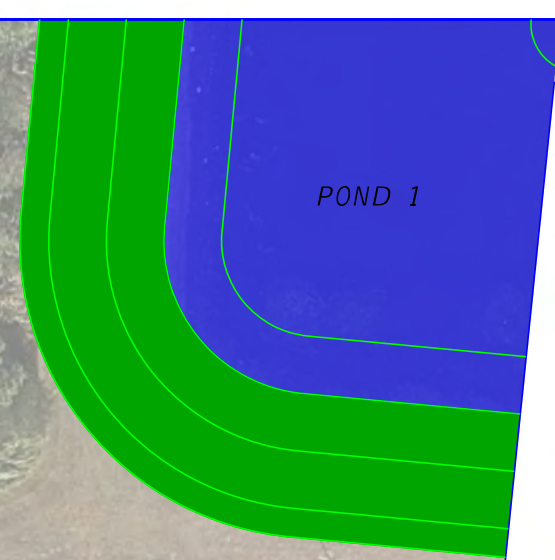
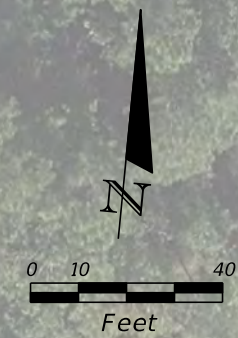
TYPICAL SECTION No. 5



TYPICAL SECTION
TRADITION BLVD
DESIGN SPEED = 35 MPH

Proposed right-of-way lines are based on a conservative estimation approach at this time and may be adjusted during the design phase.

PI STA. = 0+14.60	PI STA. = 3+21.85
Δ = 1° 48' 38" (LT)	Δ = 8° 05' 57" (RT)
D = 6° 12' 03"	D = 6° 32' 26"
T = 14.60	T = 62.02
L = 29.20	L = 123.83
R = 924.00	R = 876.00
PC STA. = 0+00.00	PC STA. = 2+59.83
PT STA. = 0+29.20	PT STA. = 3+83.66



BEGIN PROJECT
Q CONST.
SINCLAIR RD
STA. 0+0.00

Existing right-of-way lines are based on data from the Osceola County Property Appraiser as survey is not included in the study scope. Proposed right-of-way lines are based on a conservative estimation approach at this time and may be adjusted during the design phase.

REVISIONS					
DATE	BY	DESCRIPTION	DATE	BY	DESCRIPTION

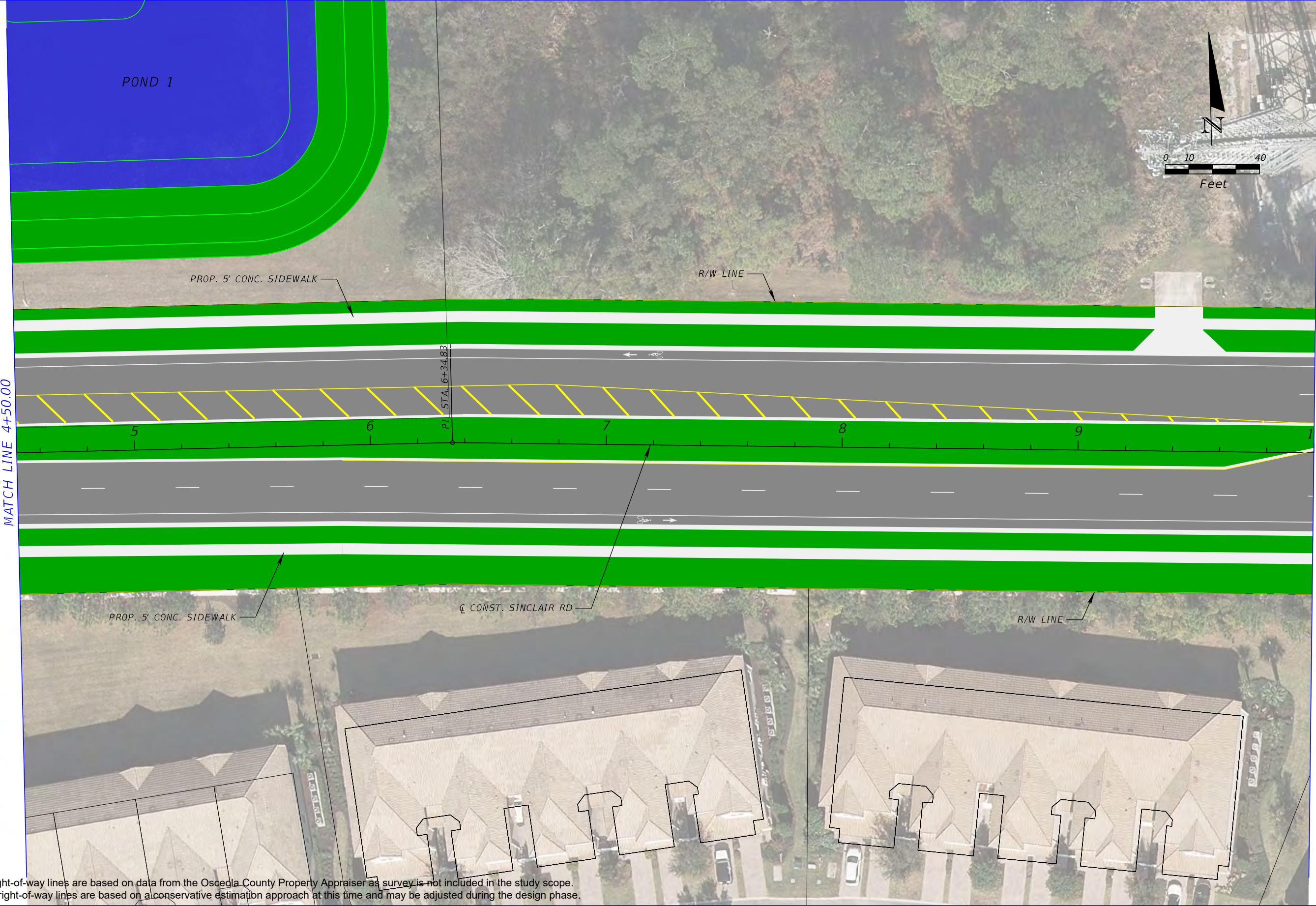
Kimley»Horn
 Registry 696
 Hao T. Chau, P.E.
 P.E. License No. 61640
 189 South Orange Avenue, Suite 1000
 Orlando, Florida 32801

**OSCEOLA COUNTY
 TRANSPORTATION
 AND TRANSIT**
 1 Courthouse Square, Suite 3100
 Kissimmee, Florida 34741-5488
 Phone: (407) 742-0662 Fax (407) 742-0600

**SINCLAIR ROAD
 CONCEPT PLANS (01)**

SHEET
NO.
7

THE OFFICIAL RECORD OF THIS SHEET IS THE ELECTRONIC FILE DIGITALLY SIGNED AND SEALED UNDER RULE 61G15-23.004, F.A.C.



MATCH LINE 4+50.00

MATCH LINE 10+00.00

Existing right-of-way lines are based on data from the Osceola County Property Appraiser as survey is not included in the study scope. Proposed right-of-way lines are based on a conservative estimation approach at this time and may be adjusted during the design phase.

REVISIONS					
DATE	BY	DESCRIPTION	DATE	BY	DESCRIPTION

Kimley»Horn
 Registry 696
 Hao T. Chau, P.E.
 P.E. License No. 61640
 189 South Orange Avenue, Suite 1000
 Orlando, Florida 32801

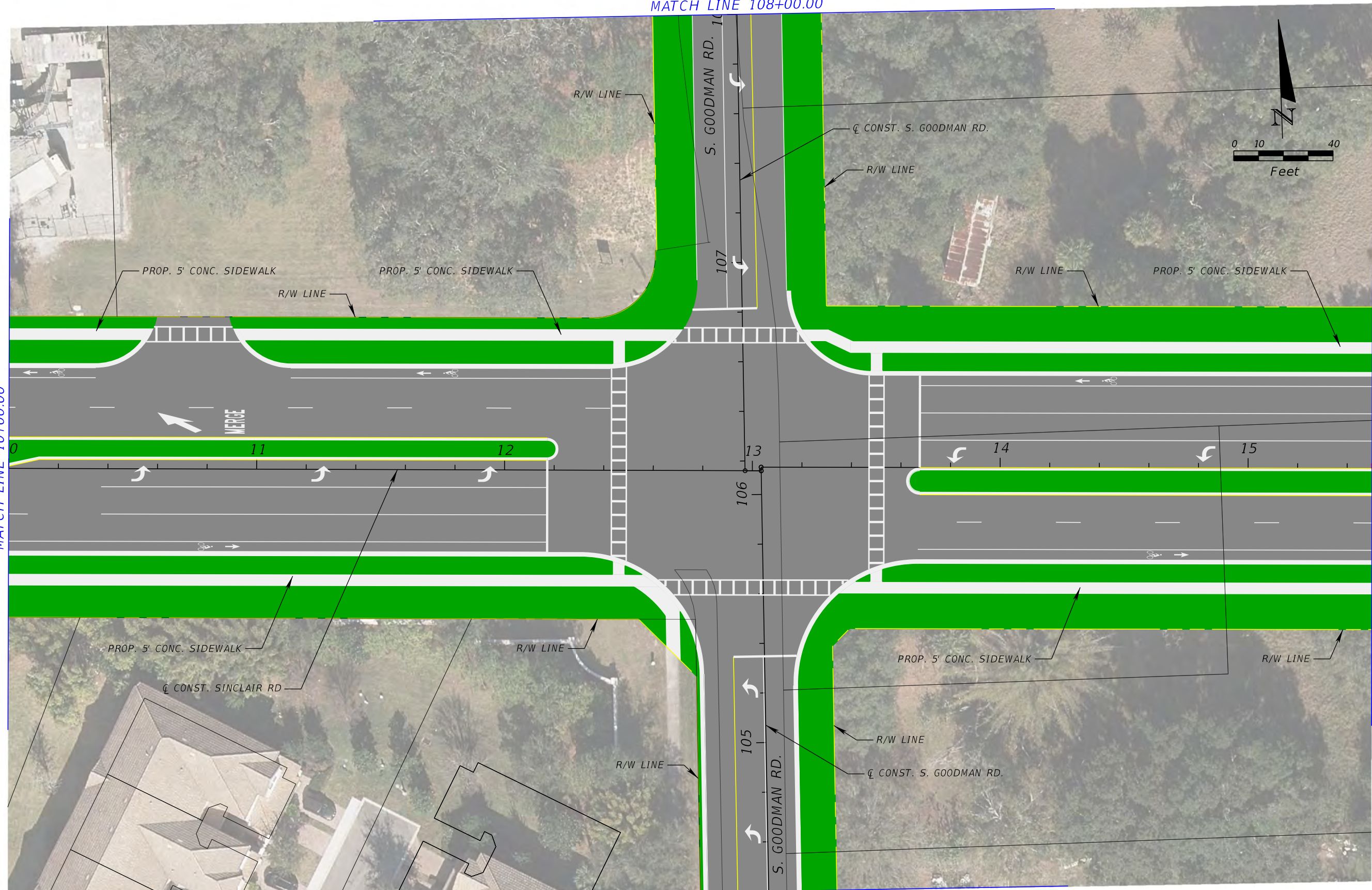
**OSCEOLA COUNTY
 TRANSPORTATION
 AND TRANSIT**
 1 Courthouse Square, Suite 3100
 Kissimmee, Florida 34741-5488
 Phone: (407) 742-0662 Fax (407) 742-0600

**SINCLAIR ROAD
 CONCEPT PLANS (02)**

SHEET
 NO.
8

THE OFFICIAL RECORD OF THIS SHEET IS THE ELECTRONIC FILE DIGITALLY SIGNED AND SEALED UNDER RULE 61G15-23.004, F.A.C.

MATCH LINE 108+00.00



MATCH LINE 10+00.00

MATCH LINE 15+50.00

MATCH LINE 104+40.00

Existing right-of-way lines are based on data from the Osceola County Property Appraiser as survey is not included in the study scope. Proposed right-of-way lines are based on a conservative estimation approach at this time and may be adjusted during the design phase.

REVISIONS					
DATE	BY	DESCRIPTION	DATE	BY	DESCRIPTION

Kimley»Horn
 Registry 696
 Hao T. Chau, P.E.
 P.E. License No. 61640
 189 South Orange Avenue, Suite 1000
 Orlando, Florida 32801



OSCEOLA COUNTY
 TRANSPORTATION
 AND TRANSIT
 1 Courthouse Square, Suite 3100
 Kissimmee, Florida 34741-5488
 Phone: (407) 742-0662 Fax (407) 742-0600

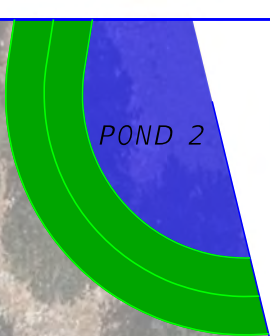
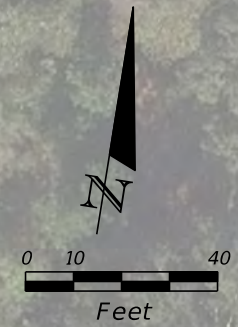
**SINCLAIR ROAD
 CONCEPT PLANS (03)**

SHEET
 NO.

9

THE OFFICIAL RECORD OF THIS SHEET IS THE ELECTRONIC FILE DIGITALLY SIGNED AND SEALED UNDER RULE 61G15-23.004, F.A.C.

P1 STA. = 18+91.02
 Δ = 28° 28' 00" (LT)
 D = 4° 59' 59"
 T = 290.69
 L = 569.38
 R = 1,146.00
 PC STA. = 16+00.33
 PT STA. = 21+69.71
 e = 0.02 (NC)



MATCH LINE 15+50.00

MATCH LINE 21+00.00

PROP. 5' CONC. SIDEWALK

R/W LINE

PC STA. 16+00.33

17

18

19

20

PROP. 5' CONC. SIDEWALK

R/W LINE

CL CONST. SINCLAIR RD

Existing right-of-way lines are based on data from the Osceola County Property Appraiser as survey is not included in the study scope. Proposed right-of-way lines are based on a conservative estimation approach at this time and may be adjusted during the design phase.

REVISIONS					
DATE	BY	DESCRIPTION	DATE	BY	DESCRIPTION

Kimley»Horn
 Registry 696
 Hao T. Chau, P.E.
 P.E. License No. 61640
 189 South Orange Avenue, Suite 1000
 Orlando, Florida 32801

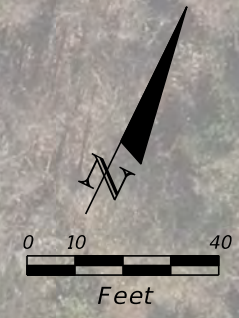

**OSCEOLA COUNTY
 TRANSPORTATION
 AND TRANSIT**
 1 Courthouse Square, Suite 3100
 Kissimmee, Florida 34741-5488
 Phone: (407) 742-0662 Fax (407) 742-0600

**SINCLAIR ROAD
 CONCEPT PLANS (04)**

SHEET
 NO.
10

THE OFFICIAL RECORD OF THIS SHEET IS THE ELECTRONIC FILE DIGITALLY SIGNED AND SEALED UNDER RULE 61G15-23.004, F.A.C.

POND 2



PROP. 5' CONC. SIDEWALK

R/W LINE

PT STA. 21+69.71

22

23

24

25

26

PROP. 5' CONC. SIDEWALK

CL CONST. SINCLAIR RD

R/W LINE

MATCH LINE 21+00.00

MATCH LINE 26+50.00

Existing right-of-way lines are based on data from the Osceola County Property Appraiser as survey is not included in the study scope. Proposed right-of-way lines are based on a conservative estimation approach at this time and may be adjusted during the design phase.

REVISIONS					
DATE	BY	DESCRIPTION	DATE	BY	DESCRIPTION

Kimley»Horn
 Registry 696
 Hao T. Chau, P.E.
 P.E. License No. 61640
 189 South Orange Avenue, Suite 1000
 Orlando, Florida 32801

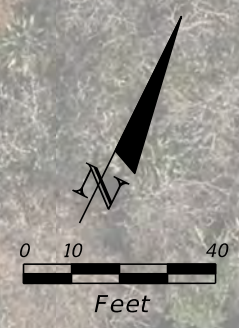


**OSCEOLA COUNTY
 TRANSPORTATION
 AND TRANSIT**
 1 Courthouse Square, Suite 3100
 Kissimmee, Florida 34741-5488
 Phone: (407) 742-0662 Fax (407) 742-0600

**SINCLAIR ROAD
 CONCEPT PLANS (05)**

SHEET NO.
 11

THE OFFICIAL RECORD OF THIS SHEET IS THE ELECTRONIC FILE DIGITALLY SIGNED AND SEALED UNDER RULE 61G15-23.004, F.A.C.



MATCH LINE 26+50.00

MATCH LINE 32+00.00



Existing right-of-way lines are based on data from the Osceola County Property Appraiser as survey is not included in the study scope. Proposed right-of-way lines are based on a conservative estimation approach at this time and may be adjusted during the design phase.

REVISIONS					
DATE	BY	DESCRIPTION	DATE	BY	DESCRIPTION

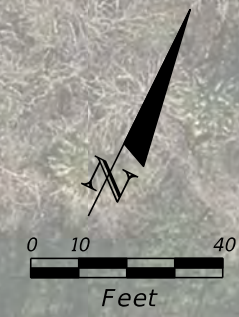
Kimley»Horn
 Registry 696
 Hao T. Chau, P.E.
 P.E. License No. 61640
 189 South Orange Avenue, Suite 1000
 Orlando, Florida 32801

**OSCEOLA COUNTY
 TRANSPORTATION
 AND TRANSIT**
 1 Courthouse Square, Suite 3100
 Kissimmee, Florida 34741-5488
 Phone: (407) 742-0662 Fax (407) 742-0600

**SINCLAIR ROAD
 CONCEPT PLANS (06)**

SHEET
 NO.
12

THE OFFICIAL RECORD OF THIS SHEET IS THE ELECTRONIC FILE DIGITALLY SIGNED AND SEALED UNDER RULE 61G15-23.004, F.A.C.



MATCH LINE 32+00.00

MATCH LINE 37+50.00



Existing right-of-way lines are based on data from the Osceola County Property Appraiser as survey is not included in the study scope. Proposed right-of-way lines are based on a conservative estimation approach at this time and may be adjusted during the design phase.

REVISIONS					
DATE	BY	DESCRIPTION	DATE	BY	DESCRIPTION

Kimley»Horn
 Registry 696
 Hao T. Chau, P.E.
 P.E. License No. 61640
 189 South Orange Avenue, Suite 1000
 Orlando, Florida 32801

**OSCEOLA COUNTY
 TRANSPORTATION
 AND TRANSIT**
 1 Courthouse Square, Suite 3100
 Kissimmee, Florida 34741-5488
 Phone: (407) 742-0662 Fax (407) 742-0600

**SINCLAIR ROAD
 CONCEPT PLANS (07)**

SHEET NO.
13

THE OFFICIAL RECORD OF THIS SHEET IS THE ELECTRONIC FILE DIGITALLY SIGNED AND SEALED UNDER RULE 61G15-23.004, F.A.C.



MATCH LINE 37+50.00

MATCH LINE 43+00.00



Existing right-of-way lines are based on data from the Osceola County Property Appraiser as survey is not included in the study scope. Proposed right-of-way lines are based on a conservative estimation approach at this time and may be adjusted during the design phase.

REVISIONS					
DATE	BY	DESCRIPTION	DATE	BY	DESCRIPTION

Kimley»Horn
 Registry 696
 Hao T. Chau, P.E.
 P.E. License No. 61640
 189 South Orange Avenue, Suite 1000
 Orlando, Florida 32801



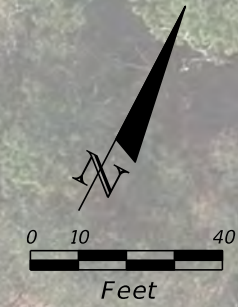
**OSCEOLA COUNTY
 TRANSPORTATION
 AND TRANSIT**
 1 Courthouse Square, Suite 3100
 Kissimmee, Florida 34741-5488
 Phone: (407) 742-0662 Fax (407) 742-0600

**SINCLAIR ROAD
 CONCEPT PLANS (08)**

SHEET NO.
14

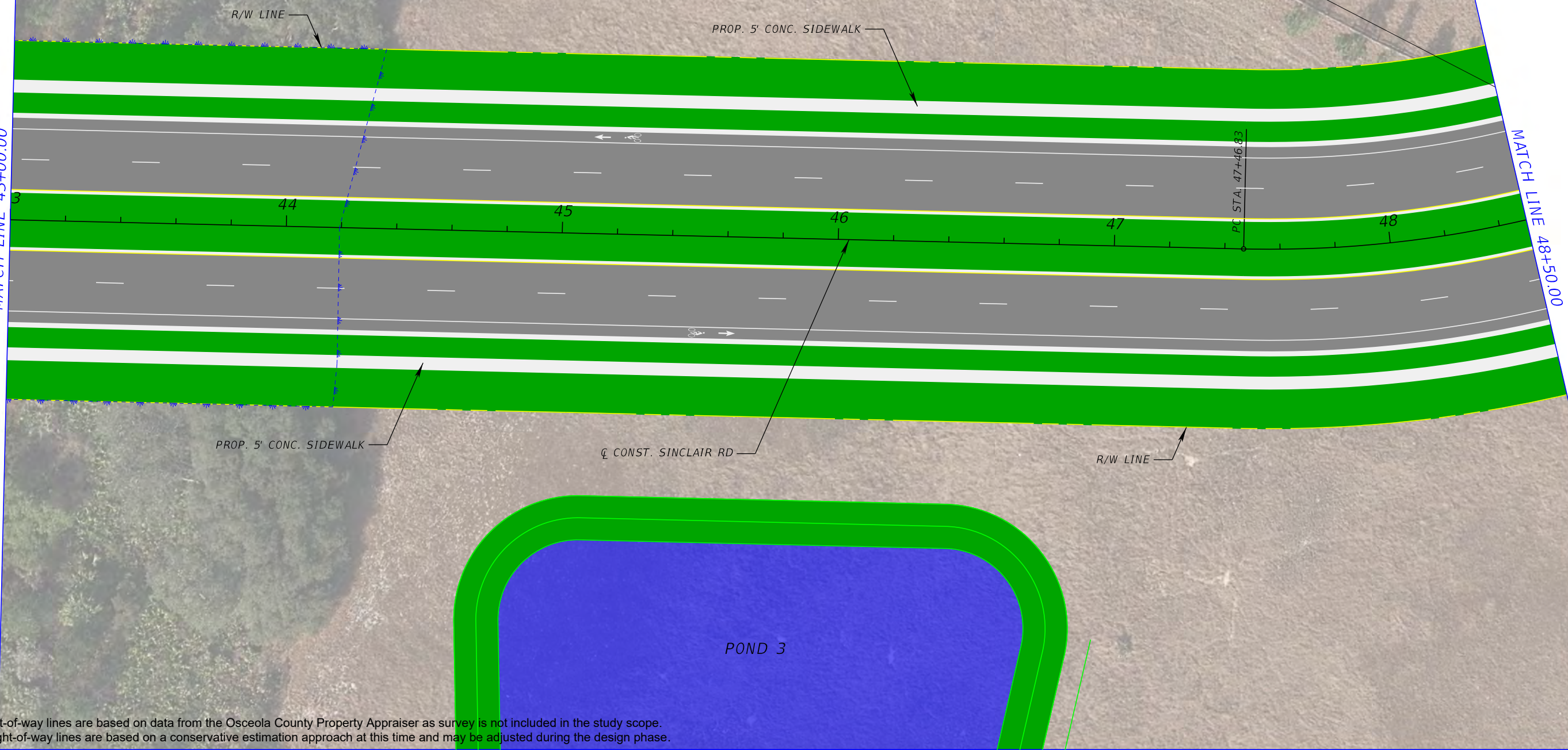
THE OFFICIAL RECORD OF THIS SHEET IS THE ELECTRONIC FILE DIGITALLY SIGNED AND SEALED UNDER RULE 61G15-23.004, F.A.C.

PI STA. = 50+01.59
 Δ = 63° 50' 11" (LT)
 D = 14° 00' 31"
 T = 254.76
 L = 455.69
 R = 409.00
 PC STA. = 47+46.83
 PT STA. = 52+02.52
 e = 0.045



MATCH LINE 43+00.00

MATCH LINE 48+50.00



Existing right-of-way lines are based on data from the Osceola County Property Appraiser as survey is not included in the study scope. Proposed right-of-way lines are based on a conservative estimation approach at this time and may be adjusted during the design phase.

REVISIONS					
DATE	BY	DESCRIPTION	DATE	BY	DESCRIPTION

Kimley»Horn
 Registry 696
 Hao T. Chau, P.E.
 P.E. License No. 61640
 189 South Orange Avenue, Suite 1000
 Orlando, Florida 32801

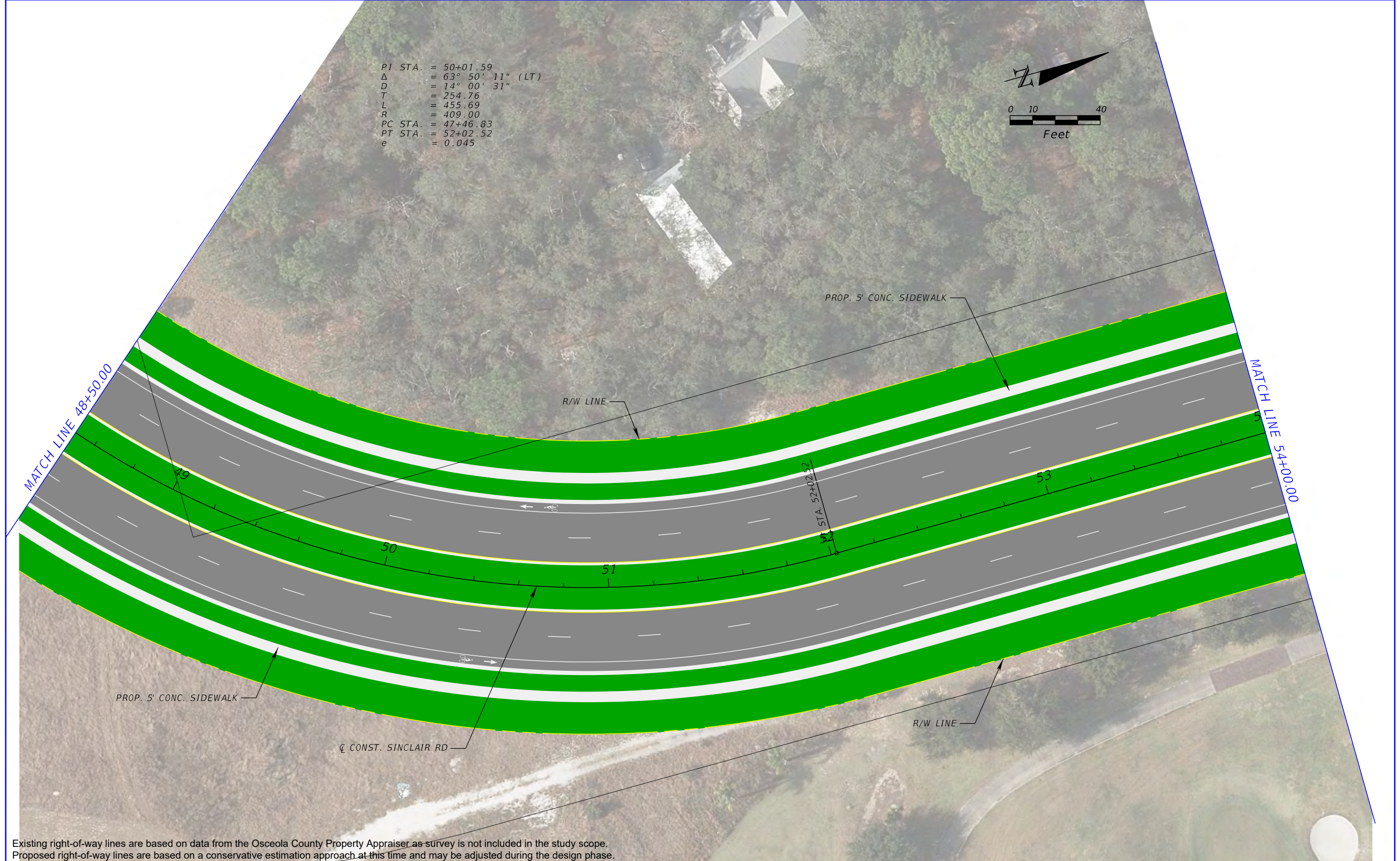

**OSCEOLA COUNTY
 TRANSPORTATION
 AND TRANSIT**
 1 Courthouse Square, Suite 3100
 Kissimmee, Florida 34741-5488
 Phone: (407) 742-0662 Fax (407) 742-0600

**SINCLAIR ROAD
 CONCEPT PLANS (09)**

SHEET NO.
 15

THE OFFICIAL RECORD OF THIS SHEET IS THE ELECTRONIC FILE DIGITALLY SIGNED AND SEALED UNDER RULE 61G15-23.004, F.A.C.

PI STA. = 50+01.59
 Δ = 63° 50' 11" (LT)
 D = 14° 00' 31"
 T = 254.76
 L = 455.69
 R = 409.00
 PC STA. = 47+46.83
 PT STA. = 52+02.52
 e = 0.045



Existing right-of-way lines are based on data from the Osceola County Property Appraiser as survey is not included in the study scope. Proposed right-of-way lines are based on a conservative estimation approach at this time and may be adjusted during the design phase.

REVISIONS					
DATE	BY	DESCRIPTION	DATE	BY	DESCRIPTION

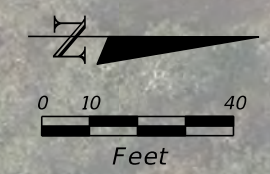
Kimley»Horn
 Registry 696
 Hao T. Chau, P.E.
 P.E. License No. 61640
 189 South Orange Avenue, Suite 1000
 Orlando, Florida 32801


**OSCEOLA COUNTY
 TRANSPORTATION
 AND TRANSIT**
 1 Courthouse Square, Suite 3100
 Kissimmee, Florida 34741-5488
 Phone: (407) 742-0662 Fax (407) 742-0600

**SINCLAIR ROAD
 CONCEPT PLANS (10)**

SHEET
 NO.
16

THE OFFICIAL RECORD OF THIS SHEET IS THE ELECTRONIC FILE DIGITALLY SIGNED AND SEALED UNDER RULE 61G15-23.004, F.A.C.



PINE VIEW TRAIL

R/W LINE

PROP. 5' CONC. SIDEWALK

MATCH LINE 54+00.00

MATCH LINE 59+50.00

55

56

57

58

59

R/W LINE

☉ CONST. SINCLAIR RD

PROP. 5' CONC. SIDEWALK

POND 4

Existing right-of-way lines are based on data from the Osceola County Property Appraiser as survey is not included in the study scope. Proposed right-of-way lines are based on a conservative estimation approach at this time and may be adjusted during the design phase.

REVISIONS					
DATE	BY	DESCRIPTION	DATE	BY	DESCRIPTION

Kimley»Horn
 Registry 696
 Hao T. Chau, P.E.
 P.E. License No. 61640
 189 South Orange Avenue, Suite 1000
 Orlando, Florida 32801

**OSCEOLA COUNTY
 TRANSPORTATION
 AND TRANSIT**
 1 Courthouse Square, Suite 3100
 Kissimmee, Florida 34741-5488
 Phone: (407) 742-0662 Fax (407) 742-0600

**SINCLAIR ROAD
 CONCEPT PLANS (11)**

SHEET NO.
 17

THE OFFICIAL RECORD OF THIS SHEET IS THE ELECTRONIC FILE DIGITALLY SIGNED AND SEALED UNDER RULE 61G15-23.004, F.A.C.



PINE VIEW TRAIL

PROP. 5' CONC. SIDEWALK

R/W LINE

MATCH LINE 59+50.00

MATCH LINE 65+00.00

60

61

62

63

64

65

R/W LINE

CL CONST. SINCLAIR RD

PROP. 5' CONC. SIDEWALK

Existing right-of-way lines are based on data from the Osceola County Property Appraiser as survey is not included in the study scope. Proposed right-of-way lines are based on a conservative estimation approach at this time and may be adjusted during the design phase.

REVISIONS					
DATE	BY	DESCRIPTION	DATE	BY	DESCRIPTION

Kimley»Horn
 Registry 696
 Hao T. Chau, P.E.
 P.E. License No. 61640
 189 South Orange Avenue, Suite 1000
 Orlando, Florida 32801



OSCEOLA COUNTY
 TRANSPORTATION
 AND TRANSIT
 1 Courthouse Square, Suite 3100
 Kissimmee, Florida 34741-5488
 Phone: (407) 742-0662 Fax (407) 742-0600

**SINCLAIR ROAD
 CONCEPT PLANS (12)**

SHEET
 NO.
 18

THE OFFICIAL RECORD OF THIS SHEET IS THE ELECTRONIC FILE DIGITALLY SIGNED AND SEALED UNDER RULE 61G15-23.004, F.A.C.



Existing right-of-way lines are based on data from the Osceola County Property Appraiser as survey is not included in the study scope. Proposed right-of-way lines are based on a conservative estimation approach at this time and may be adjusted during the design phase.

REVISIONS					
DATE	BY	DESCRIPTION	DATE	BY	DESCRIPTION

Kimley»Horn
 Registry 696
 Hao T. Chau, P.E.
 P.E. License No. 61640
 189 South Orange Avenue, Suite 1000
 Orlando, Florida 32801



OSCEOLA COUNTY
 TRANSPORTATION
 AND TRANSIT
 1 Courthouse Square, Suite 3100
 Kissimmee, Florida 34741-5488
 Phone: (407) 742-0662 Fax (407) 742-0600

**SINCLAIR ROAD
 CONCEPT PLANS (13)**

SHEET
 NO.

19

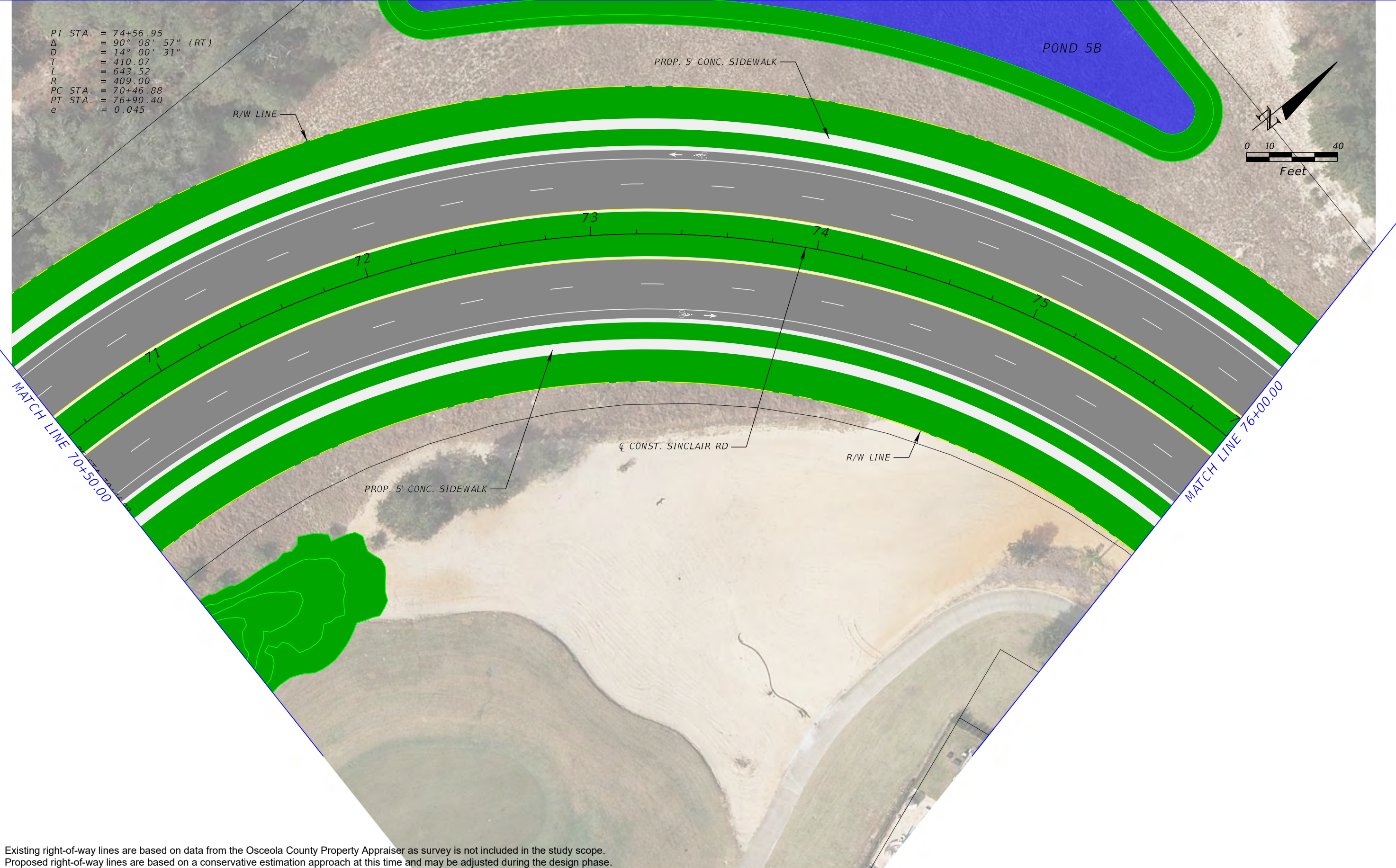
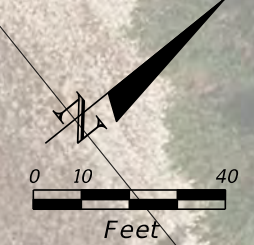
THE OFFICIAL RECORD OF THIS SHEET IS THE ELECTRONIC FILE DIGITALLY SIGNED AND SEALED UNDER RULE 61G15-23.004, F.A.C.

PI STA. = 74+56.95
 Δ = 90° 08' 57" (RT)
 D = 14° 00' 31"
 T = 410.07
 L = 643.52
 R = 409.00
 PC STA. = 70+46.88
 PT STA. = 76+90.40
 e = 0.045

POND 5B

PROP. 5' CONC. SIDEWALK

R/W LINE



Existing right-of-way lines are based on data from the Osceola County Property Appraiser as survey is not included in the study scope. Proposed right-of-way lines are based on a conservative estimation approach at this time and may be adjusted during the design phase.

REVISIONS					
DATE	BY	DESCRIPTION	DATE	BY	DESCRIPTION

Kimley»Horn
 Registry 696
 Hao T. Chau, P.E.
 P.E. License No. 61640
 189 South Orange Avenue, Suite 1000
 Orlando, Florida 32801

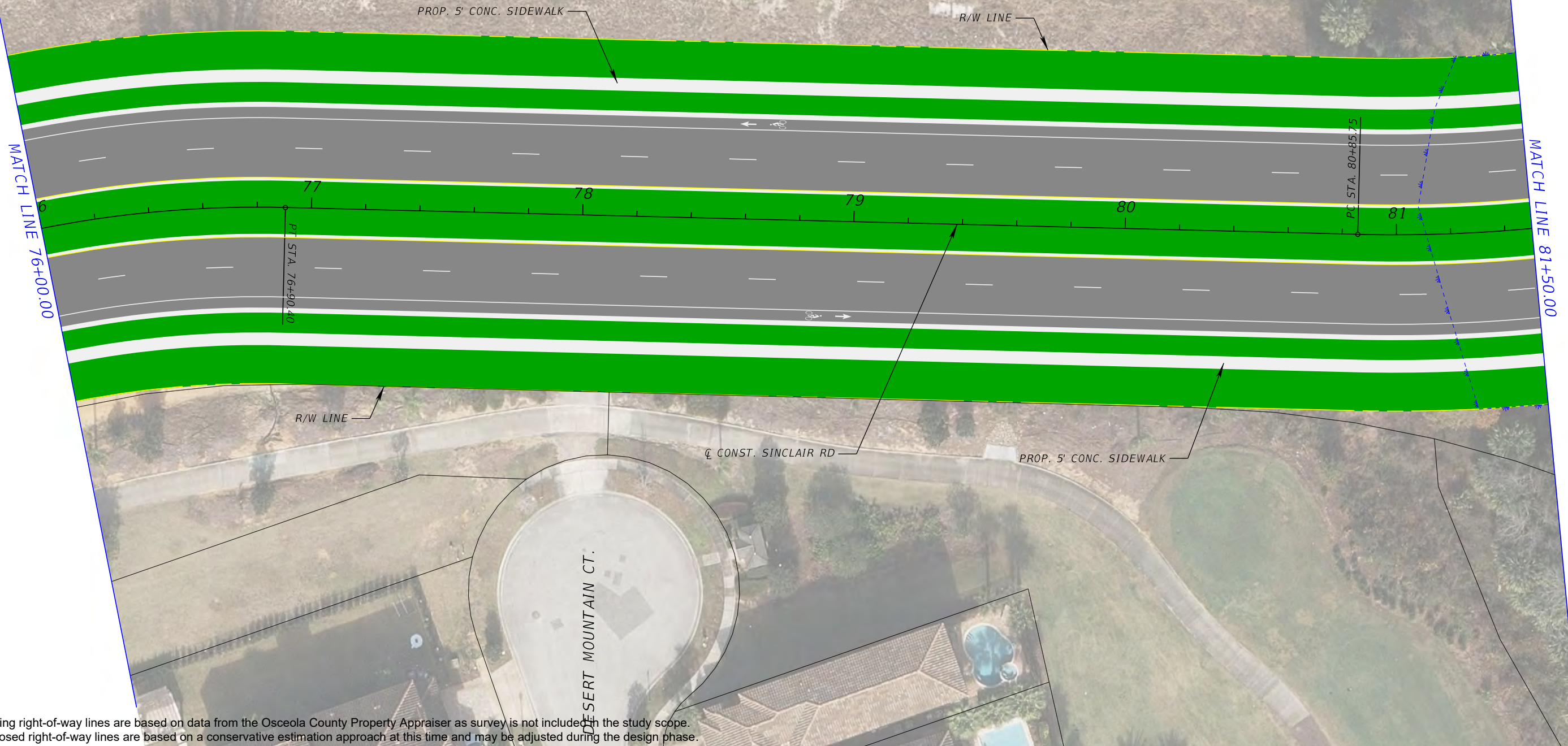
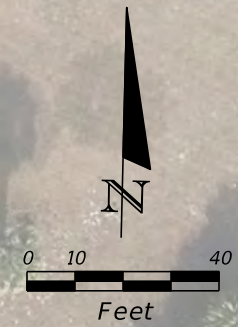

**OSCEOLA COUNTY
 TRANSPORTATION
 AND TRANSIT**
 1 Courthouse Square, Suite 3100
 Kissimmee, Florida 34741-5488
 Phone: (407) 742-0662 Fax (407) 742-0600

**SINCLAIR ROAD
 CONCEPT PLANS (14)**

SHEET NO.
 20

THE OFFICIAL RECORD OF THIS SHEET IS THE ELECTRONIC FILE DIGITALLY SIGNED AND SEALED UNDER RULE 61G15-23.004, F.A.C.

PI STA. = 86+38.91
 Δ = 90° 44' 46" (LT)
 D = 10° 29' 37"
 T = 553.16
 L = 864.76
 R = 546.00
 PC STA. = 80+85.75
 PT STA. = 89+50.52
 e = 0.045



Existing right-of-way lines are based on data from the Osceola County Property Appraiser as survey is not included in the study scope. Proposed right-of-way lines are based on a conservative estimation approach at this time and may be adjusted during the design phase.

REVISIONS					
DATE	BY	DESCRIPTION	DATE	BY	DESCRIPTION

Kimley»Horn
 Registry 696
 Hao T. Chau, P.E.
 P.E. License No. 61640
 189 South Orange Avenue, Suite 1000
 Orlando, Florida 32801

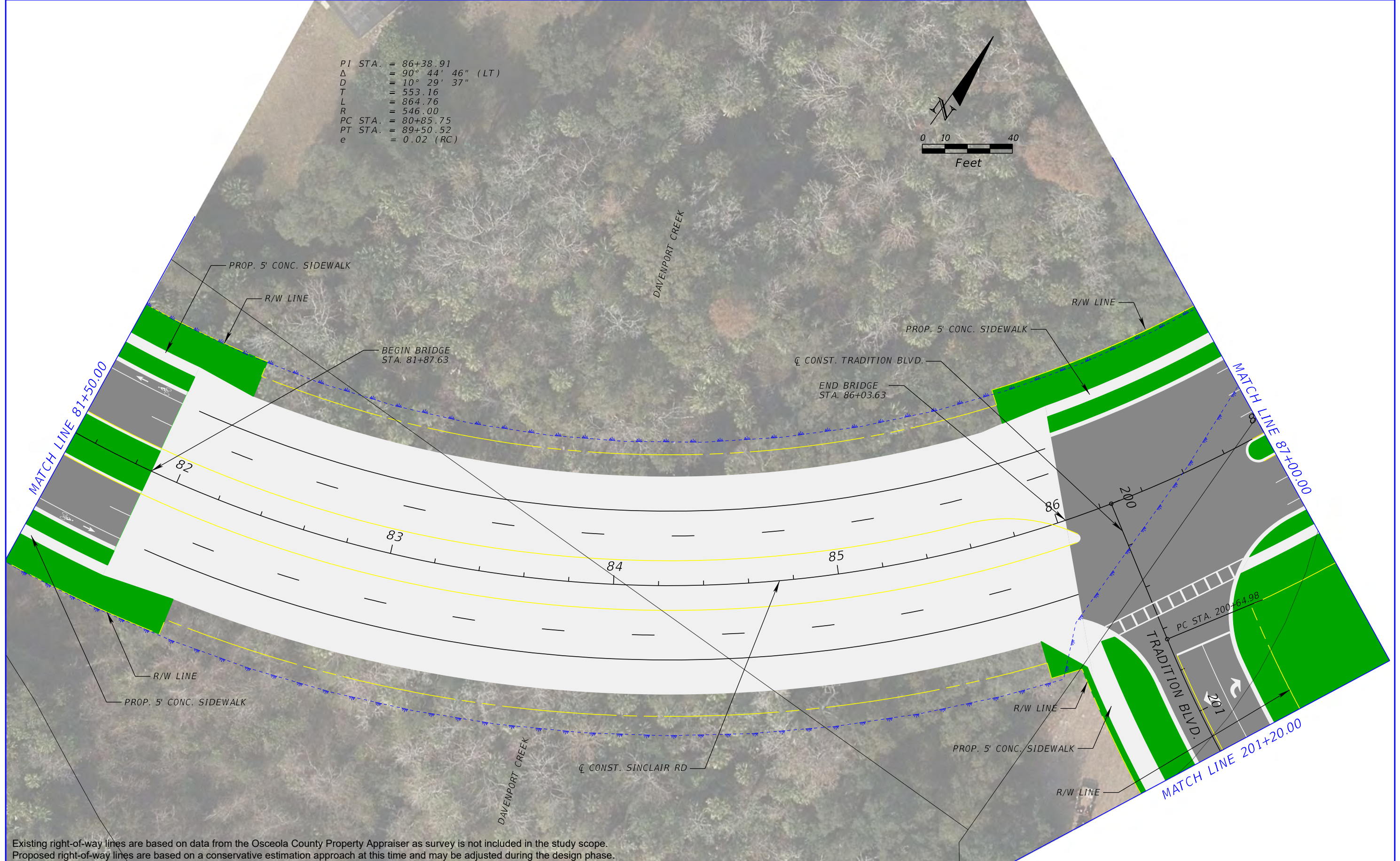
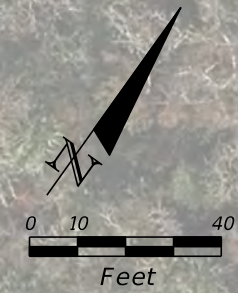

**OSCEOLA COUNTY
 TRANSPORTATION
 AND TRANSIT**
 1 Courthouse Square, Suite 3100
 Kissimmee, Florida 34741-5488
 Phone: (407) 742-0662 Fax (407) 742-0600

**SINCLAIR ROAD
 CONCEPT PLANS (15)**

SHEET NO.
 21

THE OFFICIAL RECORD OF THIS SHEET IS THE ELECTRONIC FILE DIGITALLY SIGNED AND SEALED UNDER RULE 61G15-23.004, F.A.C.

PI STA. = 86+38.91
 Δ = 90° 44' 46" (LT)
 D = 10° 29' 37"
 T = 553.16
 L = 864.76
 R = 546.00
 PC STA. = 80+85.75
 PT STA. = 89+50.52
 e = 0.02 (RC)



Existing right-of-way lines are based on data from the Osceola County Property Appraiser as survey is not included in the study scope. Proposed right-of-way lines are based on a conservative estimation approach at this time and may be adjusted during the design phase.

REVISIONS					
DATE	BY	DESCRIPTION	DATE	BY	DESCRIPTION

Kimley»Horn
 Registry 696
 Hao T. Chau, P.E.
 P.E. License No. 61640
 189 South Orange Avenue, Suite 1000
 Orlando, Florida 32801



**OSCEOLA COUNTY
 TRANSPORTATION
 AND TRANSIT**
 1 Courthouse Square, Suite 3100
 Kissimmee, Florida 34741-5488
 Phone: (407) 742-0662 Fax (407) 742-0600

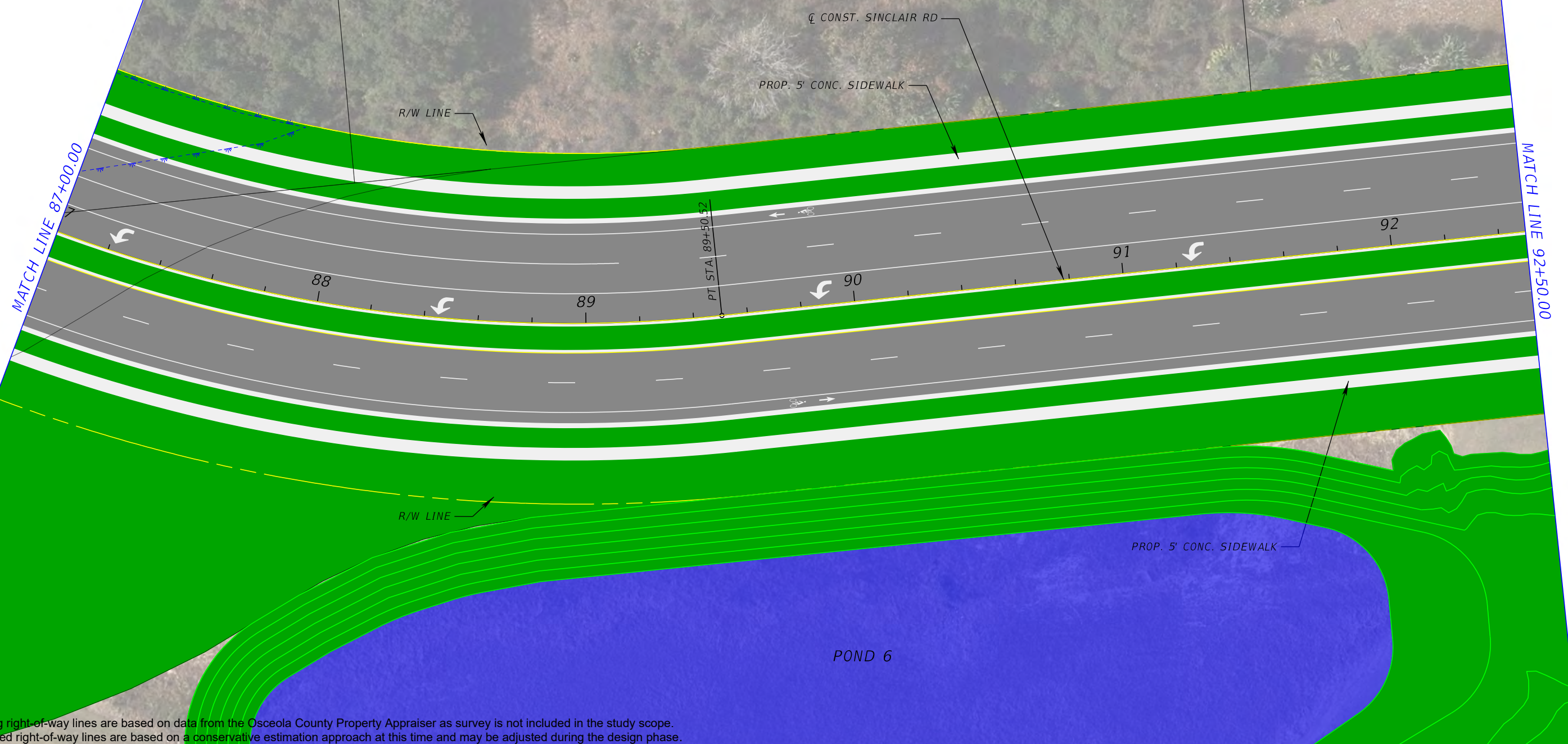
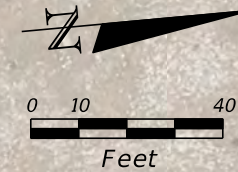
**SINCLAIR ROAD
 CONCEPT PLANS (16)**

SHEET NO.

22

THE OFFICIAL RECORD OF THIS SHEET IS THE ELECTRONIC FILE DIGITALLY SIGNED AND SEALED UNDER RULE 61G15-23.004, F.A.C.

PT STA. = 86+38.91
 Δ = 90° 44' 46" (LT)
 D = 10° 29' 37"
 T = 553.16
 L = 864.76
 R = 546.00
 PC STA. = 80+85.75
 PT STA. = 89+50.52
 e = 0.02 (RC)



Existing right-of-way lines are based on data from the Osceola County Property Appraiser as survey is not included in the study scope. Proposed right-of-way lines are based on a conservative estimation approach at this time and may be adjusted during the design phase.

REVISIONS					
DATE	BY	DESCRIPTION	DATE	BY	DESCRIPTION

Kimley»Horn
 Registry 696
 Hao T. Chau, P.E.
 P.E. License No. 61640
 189 South Orange Avenue, Suite 1000
 Orlando, Florida 32801



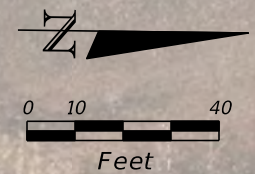
OSCEOLA COUNTY
 TRANSPORTATION
 AND TRANSIT
 1 Courthouse Square, Suite 3100
 Kissimmee, Florida 34741-5488
 Phone: (407) 742-0662 Fax (407) 742-0600

**SINCLAIR ROAD
 CONCEPT PLANS (17)**

SHEET NO.

23

THE OFFICIAL RECORD OF THIS SHEET IS THE ELECTRONIC FILE DIGITALLY SIGNED AND SEALED UNDER RULE 61G15-23.004, F.A.C.



MATCH LINE 92+50.00



Existing right-of-way lines are based on data from the Osceola County Property Appraiser as survey is not included in the study scope. Proposed right-of-way lines are based on a conservative estimation approach at this time and may be adjusted during the design phase.

REVISIONS					
DATE	BY	DESCRIPTION	DATE	BY	DESCRIPTION

Kimley»Horn
 Registry 696
 Hao T. Chau, P.E.
 P.E. License No. 61640
 189 South Orange Avenue, Suite 1000
 Orlando, Florida 32801

**OSCEOLA COUNTY
 TRANSPORTATION
 AND TRANSIT**
 1 Courthouse Square, Suite 3100
 Kissimmee, Florida 34741-5488
 Phone: (407) 742-0662 Fax (407) 742-0600

**SINCLAIR ROAD
 CONCEPT PLANS (18)**

SHEET NO.
 24

THE OFFICIAL RECORD OF THIS SHEET IS THE ELECTRONIC FILE DIGITALLY SIGNED AND SEALED UNDER RULE 61G15-23.004, F.A.C.



Existing right-of-way lines are based on data from the Osceola County Property Appraiser as survey is not included in the study scope. Proposed right-of-way lines are based on a conservative estimation approach at this time and may be adjusted during the design phase.

REVISIONS					
DATE	BY	DESCRIPTION	DATE	BY	DESCRIPTION

Kimley»Horn
 Registry 696
 Hao T. Chau, P.E.
 P.E. License No. 61640
 189 South Orange Avenue, Suite 1000
 Orlando, Florida 32801



OSCEOLA COUNTY
 TRANSPORTATION
 AND TRANSIT
 1 Courthouse Square, Suite 3100
 Kissimmee, Florida 34741-5488
 Phone: (407) 742-0662 Fax (407) 742-0600

**SINCLAIR ROAD
 CONCEPT PLANS (19)**

SHEET
 NO.
 25

MATCH LINE 104+40.00

THE OFFICIAL RECORD OF THIS SHEET IS THE ELECTRONIC FILE DIGITALLY SIGNED AND SEALED UNDER RULE 61G15-23.004, F.A.C.

MATCH LINE 108+00.00



Existing right-of-way lines are based on data from the Osceola County Property Appraiser as survey is not included in the study scope. Proposed right-of-way lines are based on a conservative estimation approach at this time and may be adjusted during the design phase.

REVISIONS					
DATE	BY	DESCRIPTION	DATE	BY	DESCRIPTION

Kimley»Horn
 Registry 696
 Hao T. Chau, P.E.
 P.E. License No. 61640
 189 South Orange Avenue, Suite 1000
 Orlando, Florida 32801



OSCEOLA COUNTY
 TRANSPORTATION
 AND TRANSIT
 1 Courthouse Square, Suite 3100
 Kissimmee, Florida 34741-5488
 Phone: (407) 742-0662 Fax (407) 742-0600

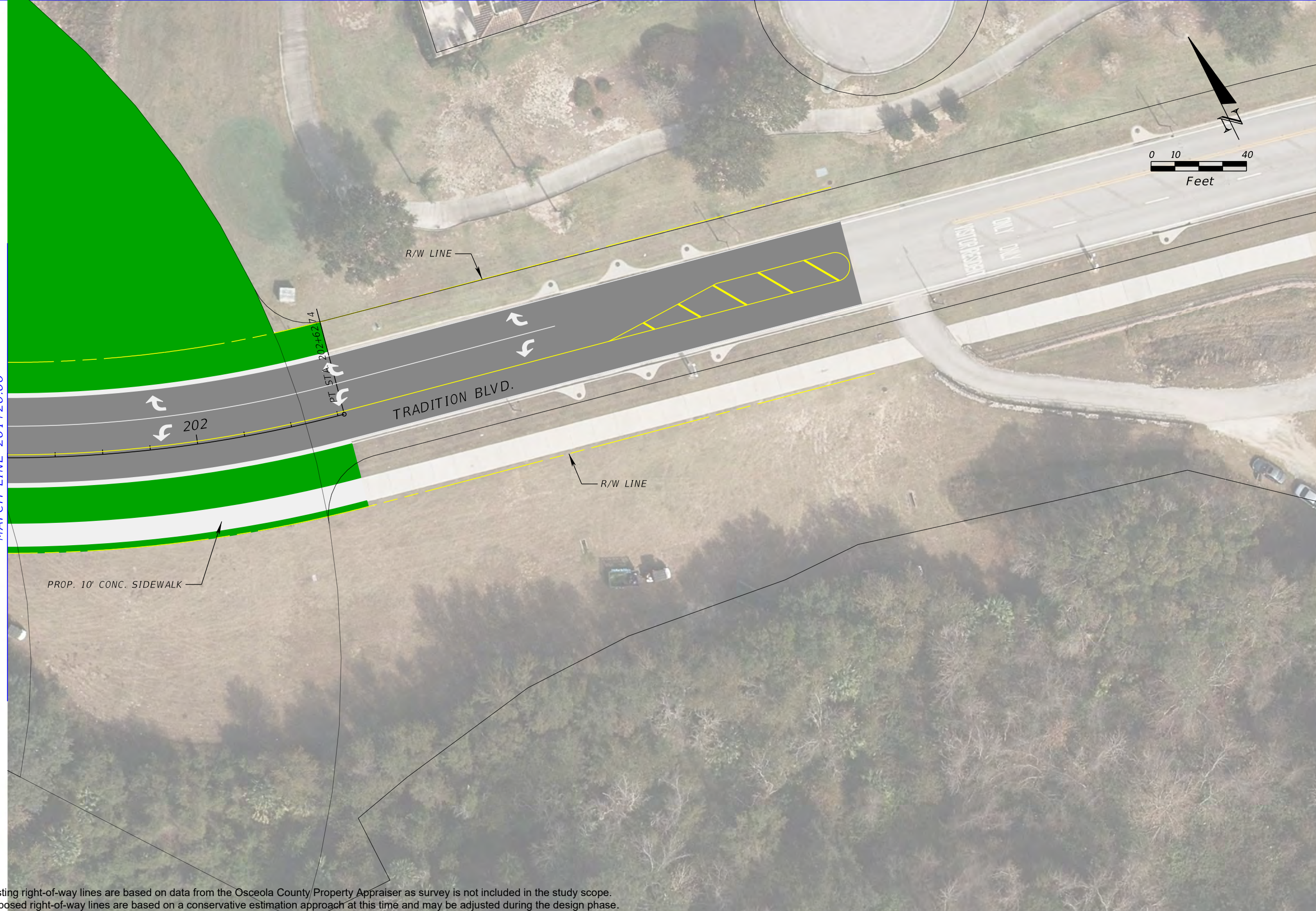
**SINCLAIR ROAD
 CONCEPT PLANS (20)**

SHEET NO.

26

THE OFFICIAL RECORD OF THIS SHEET IS THE ELECTRONIC FILE DIGITALLY SIGNED AND SEALED UNDER RULE 61G15-23.004, F.A.C.

MATCH LINE 201+20.00



Existing right-of-way lines are based on data from the Osceola County Property Appraiser as survey is not included in the study scope. Proposed right-of-way lines are based on a conservative estimation approach at this time and may be adjusted during the design phase.

REVISIONS					
DATE	BY	DESCRIPTION	DATE	BY	DESCRIPTION

Kimley»Horn
 Registry 696
 Hao T. Chau, P.E.
 P.E. License No. 61640
 189 South Orange Avenue, Suite 1000
 Orlando, Florida 32801

**OSCEOLA COUNTY
 TRANSPORTATION
 AND TRANSIT**
 1 Courthouse Square, Suite 3100
 Kissimmee, Florida 34741-5488
 Phone: (407) 742-0662 Fax (407) 742-0600

**SINCLAIR ROAD
 CONCEPT PLANS (21)**

SHEET
 NO.
 27

THE OFFICIAL RECORD OF THIS SHEET IS THE ELECTRONIC FILE DIGITALLY SIGNED AND SEALED UNDER RULE 61G15-23.004, F.A.C.