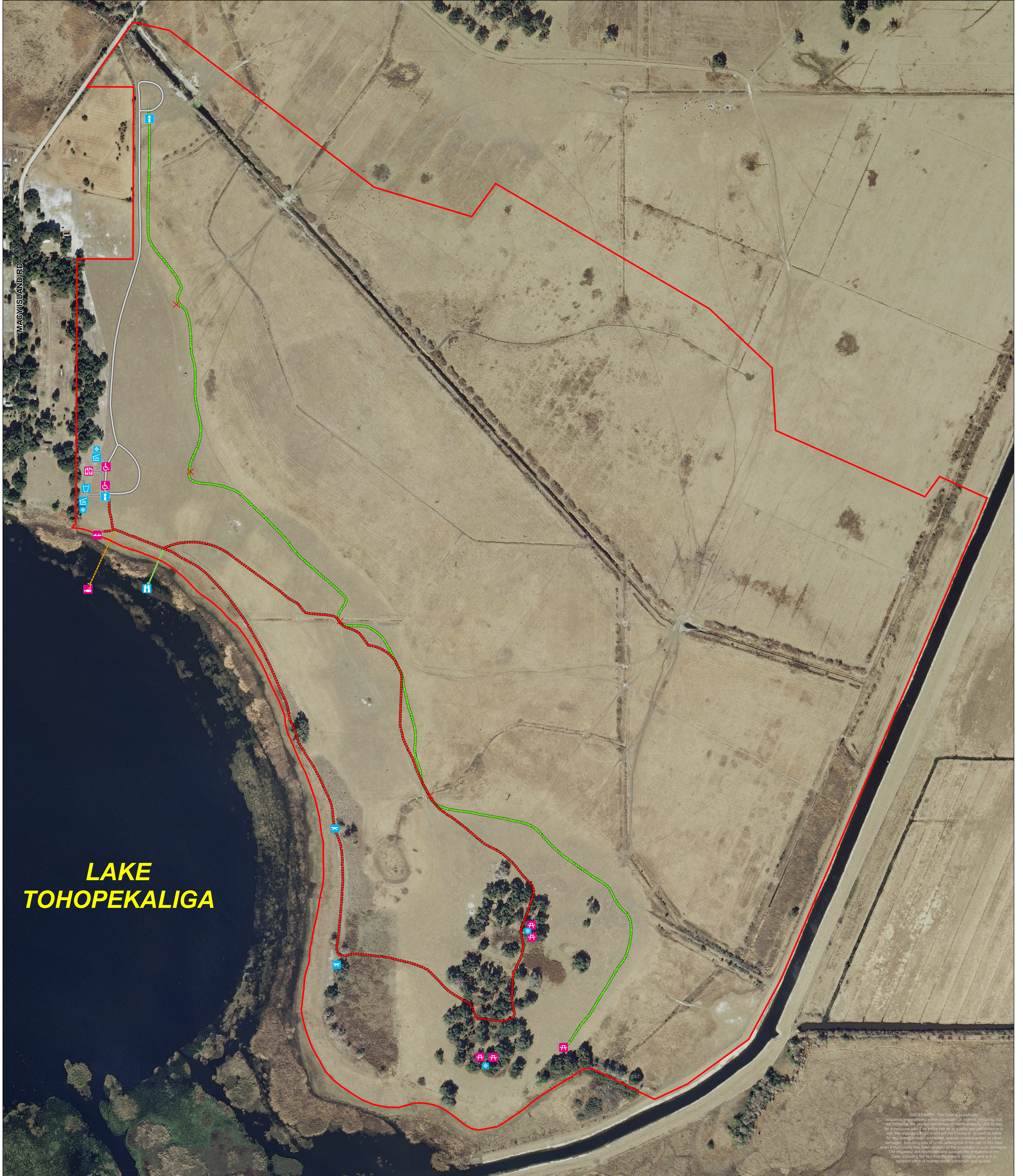


Twin Oaks Conservation Area

File: I:\ProjectWarehouse\StC_Narcoossee_Warehouse\Parks_GPS\LakeRunnymede\LakeRunnymedeTrails.mxd

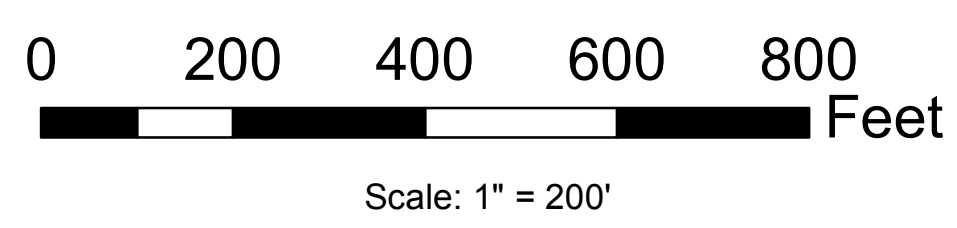


DISCLAIMER: The County specifically disclaims any warranty, either expressed or implied, including but not limited to the implied warranties of merchantability, fitness for a particular use. The entire risk as to quality and performance is with the user. The County is not responsible for any damages, including loss of profit, arising out of the use of the data even if the County has been advised of the possibility of such damages. The user shall be responsible and accept the responsibility of the data, including the fact that the data is dynamic and is in a constant state of change and is subject to update.



Osceola County Natural Resources

Map Produced By Osceola County Planning Office
Geographic Information Systems Section



Legend

| | | | |
|-----------------------------|--------------------|--------------------|----------------------|
| Twin Oaks Conservation Area | Observation Area | Historical Feature | Group Tent Camp Site |
| Horse Trail | Fishing Dock | Water Pump | Fire Pit |
| Walking Trail | Canoe/Kayak Launch | Parking | Grill |
| Roadway | Handicap Parking | Information Kiosk | Picnic Table |
| Sidewalk | Restroom | Bench | |
| Fishing Pier | Culvert | Trail Head | |
| Observation Deck | | | |
| Pavilion | | | |

