

**Osceola County Joint Land Use Study (JLUS 2012)**

**Planning Commission**

May 3, 2012

Presented by: Joshua DeVries, AICP  
Osceola County  
Community Development

---

---

---

---

---

---

---

---

Map 1: Osceola County  
Location Map

**Osceola County Joint Land Use Study (JLUS 2012)**

---

---

---

---

---

---

---

---

**Osceola County Joint Land Use Study (JLUS 2012)**

**HISTORY**

- \* CFRPC began initial JLUS (September 2008)
- \* CFRPC "August 2010 JLUS" final document covering 4 Counties and 3 Cities (August 2010)
- \* Evaluated by Osceola County
- \* Creation of the "Osceola County JLUS 2012" determined to be best approach for Osceola County

---

---

---

---

---

---

---

---

## JLUS 2012 – Public Outreach



February 08, 2012 Meet and Greet with the Ranchers & APAFR Commander

March 07, 2012 Community Meeting with the Ranchers, Residents, & APAFR Commander



---

---

---

---

---

---

---

---

## JLUS 2012 Goals and Actions:

- \* Collaborate with Avon Park Air Force Range (APAFR), the public, and ranching community,
- \* Protect health, safety and welfare,
- \* Identify appropriate measures to ensure compatibility,
- \* Increase communication & cooperation, and
- \* Promote compatibility with the military operations.

---

---

---

---

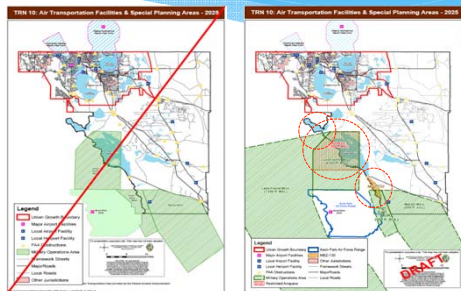
---

---

---

---

## Osceola County JLUS 2012 Recommendations (Immediate Actions)



### 1. Identify Military Operation Areas and High Noise Zones

---

---

---

---

---

---

---

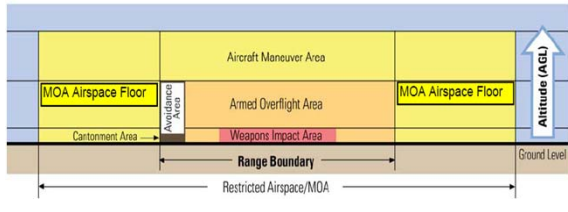
---

## Osceola County JLUS 2012 Recommendations (Future Actions)

### 2. Lighting Standards

### 3. Height Standards

### 4. Implement Public Awareness & Disclosure Measures




---

---

---

---

---

---

---

---

---

---

## Osceola County JLUS 2012 Recommendations (Ongoing Actions)

### 5. Support Military Readiness through Environmental Conservation

### 6. Intergovernmental Coordination




---

---

---

---

---

---

---

---

---

---

## Next Steps

- 1) Development Review Committee
- 2) Growth Management Taskforce Update
- 3) Board of County Commissioners Status Update
- 4) Transmittal Public Hearings (CPA12-0001)
  - a. Planning Commission Public Hearing
  - b. Board of County Commissioners Public Hearing
  - c. Transmit to DEO & State Reviewing Agencies
- 5) State Agency Review (30 days)
- 6) BCC Adoption Public Hearing (CPA12-0001)
- 7) Estimated Effective date: Early 4<sup>th</sup> Quarter of 2012.

---

---

---

---

---

---

---

---

---

---