

JOINT LAND USE STUDY
JLUS
 AVON PARK AIR FORCE RANGE

Osceola County Joint Land Use Study (JLUS 2012)
Board of County Commissioners
 June 4, 2012

Presented by: Joshua DeVries, AICP
 Osceola County
 Community Development

Map 1: Osceola County
 Location Map

Osceola County Joint Land Use Study (JLUS 2012)

Osceola County Joint Land Use Study (JLUS 2012)

HISTORY

- * CFRPC began initial JLUS (September 2008)
- * CFRPC "August 2010 JLUS" final document covering 4 Counties and 3 Cities (August 2010)
- * Evaluated by Osceola County
- * Creation of the "Osceola County JLUS 2012" determined to be best approach for Osceola County

JLUS 2012 – Public Outreach



February 08, 2012 Meet and Greet with the Ranchers & APAFR Commander

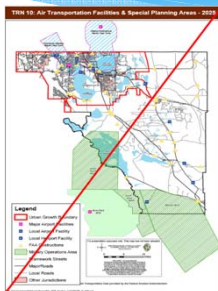
March 07, 2012 Community Meeting with the Ranchers, Residents, & APAFR Commander



JLUS 2012 Goals and Actions:

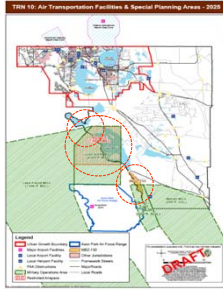
- * Collaborate with Avon Park Air Force Range (APAFR), the public, and ranching community,
- * Protect health, safety and welfare,
- * Identify appropriate measures to ensure compatibility,
- * Increase communication & cooperation, and
- * Promote compatibility with the military operations.

Osceola County JLUS 2012 Recommendations (Immediate Actions)



1. Identify Military Operation Areas and High Noise Zones

Osceola County JLUS 2012 Recommendations (Immediate Actions)



1. Identify Military Operation Areas and High Noise Zones

Osceola County JLUS 2012 Recommendations (Future Actions)

2. Lighting Standards

3. Height Standards

4. Implement Public Awareness & Disclosure Measures



Osceola County JLUS 2012 Recommendations (Ongoing Actions)

5. Support Military Readiness through Environmental Conservation



6. Intergovernmental Coordination

Next Steps

- 1) Transmittal Public Hearings (CPA12-0001)
 - a. Planning Commission Public Hearing
 - b. Board of County Commissioners Public Hearing
 - c. Transmit to DEO & State Reviewing Agencies
- 2) State Agency Review (30 days)
- 3) BCC Adoption Public Hearing (CPA12-0001)
- 4) Estimated Effective date: Early 4th Quarter of 2012.
