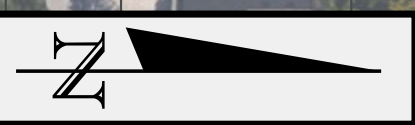
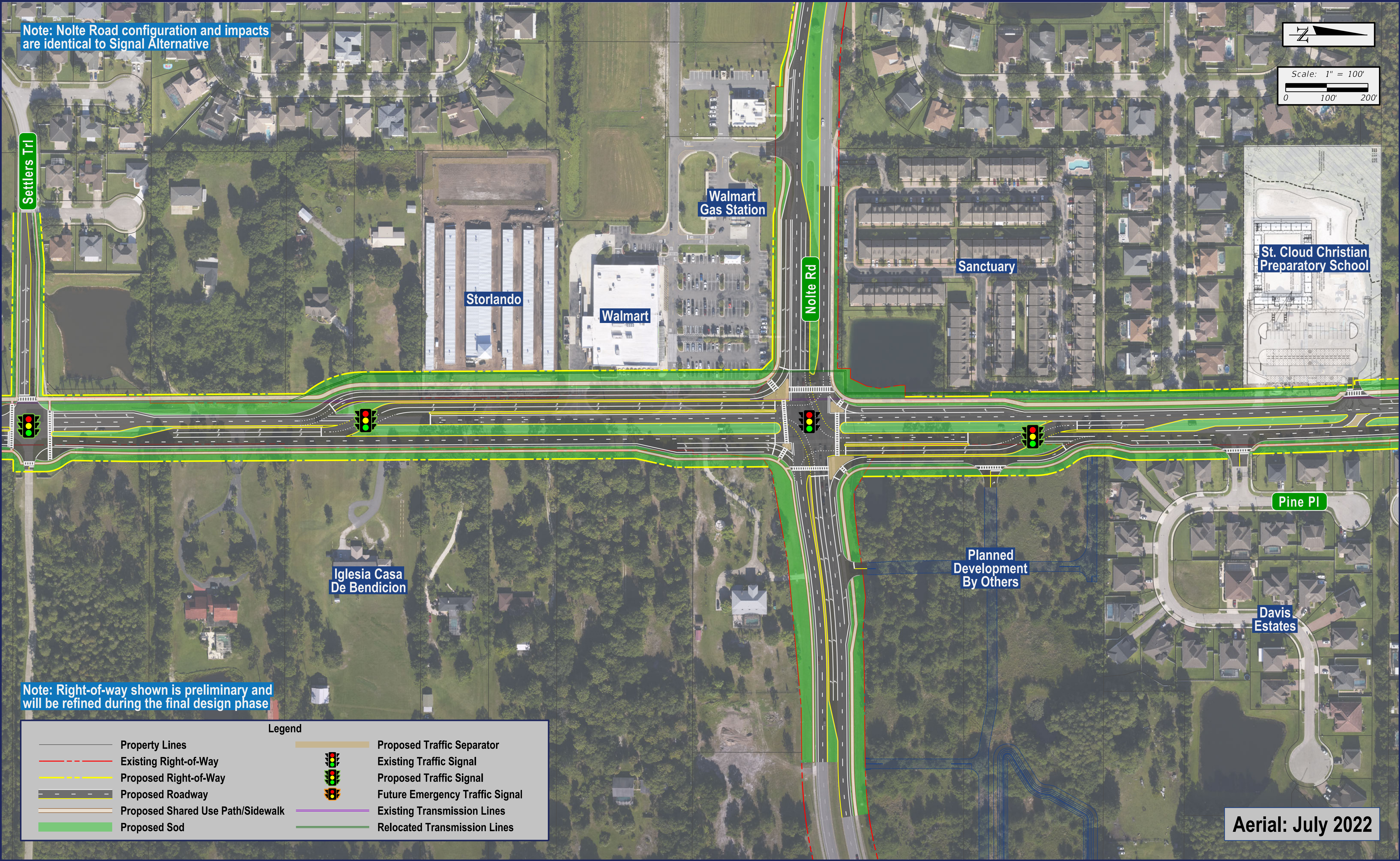


# Canoe Creek Road PD&E Study - Nolte Road Displaced Left Turn (DLT) Alternative

Note: Nolte Road configuration and impacts are identical to Signal Alternative



Scale: 1" = 100'  
0 100' 200'



Note: Right-of-way shown is preliminary and will be refined during the final design phase

Legend			
	Property Lines		Proposed Traffic Separator
	Existing Right-of-Way		Existing Traffic Signal
	Proposed Right-of-Way		Proposed Traffic Signal
	Proposed Roadway		Future Emergency Traffic Signal
	Proposed Shared Use Path/Sidewalk		Existing Transmission Lines
	Proposed Sod		Relocated Transmission Lines

Aerial: July 2022