



# **Southeast Area Transportation Study (SEATS)**



## **Community Open House Summary Report**

**March 22, 2023**



## Southeast Area Transportation Study (SEATS)

Osceola County, Florida  
Project No.: PBA-21-12706-DG

### Community Open House Summary

Date: Wednesday, March 22, 2023

Time: 6 p.m. – 7:30 p.m.

Location: Online GoToWebinar

In Person: St. Cloud Community Center

Attendees: See attached registration list

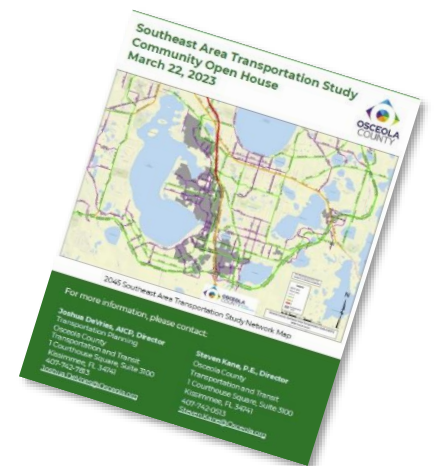
Osceola County held a Community Open House regarding the Southeast Area Transportation Study (SEATS) in Osceola County. The purpose of the open house was to provide information and receive feedback on the future roadway planning efforts to support the planned developments occurring to the south and east of Lake Tohopekaliga, and within the Alligator Chain of Lakes Conceptual Master Plan.

### Public Notification/Meeting Advertisement

Osceola County notified government partners about the Community Open House. The County also placed



Variable Message Boards about the meeting. The meeting was advertised with a newspaper display ad published in the *Orlando Sentinel - Osceola County Edition* on Sunday, March 12, 2023. The meeting notice was also posted on the Osceola County website, and a press release was sent out by the County. A copy of the newspaper display ad tear sheet is included in **Appendix A**.



### Public Meeting Agenda

The Community Open House was held in-person at the St. Cloud Community Center, 3101 17<sup>th</sup> Street, St. Cloud, FL 34769. Doors opened at 6 p.m.,



although a few people did show up earlier. As attendees walked into the lobby, they were instructed to sign in, offered a handout and comment form, then given a small circle sticker and asked to put the sticker on a map closest to where they live. The project team wanted to see what areas of Osceola County were represented at the meeting. Once inside, attendees could view

the exhibits, ask team members questions and were also able to view a looping video presentation. They were also informed that all written questions submitted would be responded to in writing.



## Southeast Area Transportation Study (SEATS)

Osceola County, Florida  
Project No.: PBA-21-12706-DG

The goal of the SEATS study is to evaluate the transportation network through the planning horizon year of 2045, identify the impact to the network from the 12 developers and identify the number of lanes that will be needed within the roadway system in 2045. Further, the study seeks to identify the timing and phasing of needed improvements at 5-year increments and indicate the developer's percentage of impact on the specific roadway segments as a proportionate share of the total trips in 2045. The purpose of this Community Open House was to provide an opportunity for the public to see what the County is proposing and get their feedback. A copy of the presentation is included in **Appendix B**.



### Meeting Attendance

Fifty-three (53) people attended the in-person meeting along with thirteen (13) staff members and consultants. A copy of the sign in sheets are included in **Appendix C**.



### Handouts

Attendees were offered a flyer with the SEATS map showing the proposed future road widenings and contact information and a comment form. The flyer and comment form are included in **Appendix D**.

### Public Comments



Thirty-two (32) questions and/or comments were submitted by 11 residents during the Community Open House. No other comments/questions were received within the public meeting record deadline of 10 days following the Community Open House.

Comments were generally neutral. Questions submitted concerned the following:

- Wants other feeder roads to help alleviate traffic congestion/ is there funding for additional feeder roads
- Concern roads will be built across lakes
- Questions over multi-modal ways to alleviate traffic
- Any impact to property owners/displacement
- Concerns over noise pollution, chemical pollution and debris / wants beauty and serenity to remain







## Southeast Area Transportation Study (SEATS)

Osceola County, Florida

Project No.: PBA-21-12706-DG

- Concerned infrastructure can't take any more developments / why are they being approved / wants moratorium on new developments
- Heavy congestion concerns
- Wants priority of expansion of Turnpike/additional interchanges
- Wants impact fees from developers prior to subdivision approval
- No more "sidewalks to nowhere"
- No more toll roads
- Need more street lights / sidewalks
- Questions about opening Friars Cove Road
- Wants notice from County when they will vote on new developments / who maintains the records of the votes / did not know anything about 2 large future developments
- Does not agree with CFX Southport Connector project
- Who is in charge of cleaning up debris in roads/lakes/ not mainting them well



Responses were provided when possible, and all written questions were followed up with a written response by the project team. All the questions and comments that were received can be found in **Appendix E**.

### End of Meeting Summary

This public meeting summary was prepared by Shari Curley, communications manager, Quest Corporation of America Inc. If you feel that clarifications are necessary, or if it differs from your understanding, please notify Shari by email at [shari.curley@gcausa.com](mailto:shari.curley@gcausa.com).



# **APPENDIX A**



Client Name: **Quest Corporation of America (QCA)**  
 Advertiser: **Main News/A012/FLA**  
 Section/Page/Zone: **Main News/A012/FLA**  
 Description:   
 Ad Number: **7394314-1**  
 Insertion Number: **2 x 10.5000**  
 Size: **B&W**  
 Color Type: **B&W**

**Orlando Sentinel**  
**Publication Date: 03/12/2023**

This E-Sheet(R) is provided as conclusive evidence that the ad appeared in The Orlando Sentinel on the date and page indicated. You may not create derivative works, or in any way exploit or repurpose any content.

# Earth Wind & Fire accuses 'legacy' band of trademark infringement

By Ron Hurtibise  
 South Florida Sun Sentinel

Maybe if they changed their name to Dirt, Breeze and Flames?

The promoters of an act comprised of one-time side musicians for the band Earth, Wind & Fire are using the funk-and-soul supergroup's name to mislead consumers into buying tickets for upcoming shows, including one next month in Fort Lauderdale, a federal lawsuit filed in Miami is charging.

Two promoters, Georgia-based Substantial Music Group LLC and Indiana-based Stellar Communications Inc. — are named as defendants in the trademark infringement lawsuit filed by plaintiffs Earth, Wind & Fire IP, LLC.

It alleges that since about 2019, the companies hired musicians who played "for brief periods up to three decades previously" as well as others who had never played with Earth, Wind & Fire to perform songs that the real band made famous.

A scheduled April 13 show at The Parker Playhouse in Fort Lauderdale is being billed as Legacy Reunion: Earth, Wind & Fire Alumni. On the popular ticket resale website StubHub, ticket prices range from \$100 to \$371.

Meanwhile, the official Earth, Wind & Fire is scheduled to perform with Lionel Richie at the FLA Live Arena in Sunrise on Aug. 25. Tickets on StubHub for that show start at \$72 and top out at \$6,899 for floor seats in front of the stage.

The lawsuit says the defendants used Earth Wind & Fire in their name to command higher ticket prices.

"To increase ticket sales to

these concerts, Defendants hatched a scheme to falsely imply in advertising that this new group was the real Earth, Wind & Fire," the suit states.

"Defendants did this to benefit from the commercial magnetism and immense goodwill the public has for Plaintiff's 'Earth, Wind & Fire' marks and logos, thereby misleading consumers and selling more tickets at higher prices to shows Defendants promote than would be sold if Defendants honestly advertised who was rendering these performances."

Conceived by drummer and bandleader Maurice White, Earth, Wind & Fire incorporated jazz, smooth soul, gospel, pop, rock and roll, blues, folk, African music and disco as it churned out a long list of hits in the 1970s and 1980s, including Shining Star, Boogie Wonderland, Let's Groove and September.

White died in 2016, leaving ownership of the group's name and trademarks to his sons. Three original members — Philip Bailey, Maurice White's brother Verdine White, and Ralph Johnson — continue to tour as Earth, Wind & Fire under license.

Listings on popular ticketing websites, including StubHub, for the Legacy Reunion show use images of the original Earth, Wind & Fire members, while other sites commingle listings for the two acts, the suit claims.

At first the band marketed shows using text and graphics confusingly similar to the authentic Earth, Wind & Fire trademark, logo and Egyptian-themed imagery, the suit states.

After the real Earth, Wind & Fire demanded that the defendants cease and desist their "infringing conduct," the promoters "changed to



The funk and soul supergroup Earth, Wind & Fire says a "legacy" group is commanding high ticket prices by prominently using the band's name and trademarks without permission. COURTESY

less obvious but nevertheless still confusing uses of the original band's trademarks in later advertising," the suit states.

For example, instead of billing the shows as "Earth Wind & Fire Legacy Reunion," the suit charged they were later titled "Legacy Reunion of Earth Wind & Fire Alumni." But the words Earth, Wind & Fire were still prominently displayed, according to the complaint, with artwork depicting a blazing sun reminiscent of Earth Wind & Fire's "I Am" album cover.

Reached by phone, Richard Smith, founder of Substantial Music Group, called the lawsuit's charges "misleading." In an emailed statement, Smith said:

"It is sad that a greedy corporation has chosen to use trademark law to attempt to pass judgment on which previous members of Earth, Wind & Fire are worthy of being called alumni of the band and which previous members are 'fake.'"

The statement continued, "I was personally a member of the band for five years and performed on two tours and one album. I'm proud to be an alumnus of the musical group. The corporation's dismissiveness of my and others' contributions to Earth, Wind & Fire is hurtful. We will not be erased."

The lawsuit accuses the defendants of creating confusion among ticket buyers and quoted complaints it says were received by consumers who thought they were paying to see original members.

"I bought tickets to see the Earth Wind and Fire concert and attend[ed] last night," said one consumer quoted in the suit. "This was not Earth Wind and Fire. NO Philip Bailey or Verdine White. It was just a band playing Earth Wind and Fire music. I purchased 3 tickets and I was very disappointed. It was truly false advertisement. I want my money back!!!!"

The lawsuit demands that Substantial and Stellar immediately cease using any of Earth, Wind & Fire's registered or common law trademarks or anything "confusingly similar thereto" and to deliver an accounting of all revenue derived from promotion of its concerts "for payment over to Plaintiff."

The suit seeks unidentified damages and attorney's fees.

Ron Hurtibise covers business and consumer issues for the South Florida Sun Sentinel. He can be reached by phone at 954-356-4071, on Twitter @ronhurtibise or by email at rhurtibise@sunsentinel.com.

# 2-year-old dead after fatal crash in Osceola County

By Elaine Barraza  
 Orlando Sentinel

A 2-year-old from Orlando is dead after a crash involving a bus early Saturday morning, a FHP report said.

A 29-year-old woman, who was driving in a 2005 Dodge Caravan, was traveling northbound on Westside Blvd. and was approaching the intersection of Funie Steed Road in the outside lane, FHP said.

A 53-year-old man from Ocala, who was driving the bus, was stopped at a stop

sign in the same lane ahead of the Caravan.

The woman did not stop and rear-ended the bus. The woman was transported to South Lake 4-Corners hospital with minor injuries. The 2-year-old passenger, who was sitting in a forward-facing car seat, was transported to the same hospital and pronounced dead, FHP said.

The man driving the bus was not injured and remained on the scene, FHP said.

This crash remains under investigation.

**KINGDOM RV**  
 We Buy campers, all classes, A, B, & C, and travel trailers. We also buy, running cars, trucks, and boats.  
 Top dollar paid cash! We come to you.  
  
 Call, or text John at 954-895-0643 • Email, jpm8686@yahoo.com  
 Serving all central Florida. Thanks, and God bless.  
 Family Owned and Operated

**OSCEOLA COUNTY**  
**Southeast Area Transportation Study (SEATS) Community Open House**  
**March 22, 2023, 6 p.m.**

Osceola County invites the community to participate in a Community Open House regarding the Southeast Area Transportation Study (SEATS) on Wednesday, March 22, 2023. The purpose of the open house is to provide information and receive feedback on future roadway planning efforts to support the planned developments occurring to the south and east of Lake Tohopekaliga, and within the Alligator Chain of Lakes Conceptual Master Plan.

This Community Open House will be held in person at the St. Cloud Community Center, 3101 17<sup>th</sup> Street, St. Cloud, FL 34769, from 6 p.m. to 7:30 p.m.

Public participation is solicited without regard to race, color, national origin, age, sex, religion, disability or family status. Persons who require special accommodations under the Americans with Disabilities Act or persons who require translation services should contact the Osceola County ADA Coordinator, 407-742-1200 (TTD: 800-955-8771) or email at ADA.Coordinator@osceola.org at least 7 days before the meeting.

For more information, please contact Osceola County Director of Transportation Planning Joshua DeVries, AICP, at 407-742-7813 or by email at Joshua.DeVries@osceola.org.

**Community Open House In Person**  
**St. Cloud Community Center**  
**3101 17<sup>th</sup> Street, St. Cloud, FL 34769**  
**6 p.m. - 7:30 p.m.**

## Insurance

from Page 3

who lives on a fixed income.

Insurance companies are required to ask the state's Office of Insurance Regulation if they plan to raise rates by more than 15% in a year. Six private insurers asked the state for rate hikes last year, including Southern Fidelity, which asked for an 84.5% hike before being forced into liquidation by the state, according to hearing notices on the agency's website.

But companies can also raise rates without approval by increasing other factors in the policy, such as the estimated costs of replacement materials or increases in the price of reinsurance, the insurance that covers the companies in catastrophic events.

Citizens rate increases, however, are capped by the state, this year at 12%.

Citizens spokesman Michael Peltier wrote in an email that the company is woefully underfunded, something it sees as "a worsening trend."

The company currently has a \$4.4 billion surplus for claims and \$422 billion in total exposure. If Citizens is unable to cover all of its claims after a major hurricane or another disaster, the state can levy an up to 2% surcharge on all insurance contracts in the state — including auto insurance and other policies — until it is paid back.

In 2007, the state charged a 14% assessment on all prop-



Orlando homeowner Patti Maguire in front of her Dover Estates house on March 3. Insurance costs on her home have nearly tripled in one year as premiums in Florida continue to skyrocket. JOE BURBANK/ORLANDO SENTINEL

erty insurance to make up for a \$1.7 billion shortfall from Citizens after the 2004-2005 hurricanes. That assessment, brought down to 1% after 2011, ended in 2015.

Charles Yang, a professor of insurance and risk management at Florida Atlantic University, says adding policies at Citizens should pay for itself as more premiums become available to handle claims.

"It's not a problem," he said. "It's the way we insure each other."

Maguire said she looked at a policy from Citizens that was a couple of hundred dollars cheaper than what she pays now, but she's nervous about adding to the company's exposure.

"I feel like everyone is going to be on Citizens ... and the state will have to cover the shortfall in the next hurricane, and that means you and I will be paying for

it," she said.

Lucas said many of his clients feel the same way. "Everyone goes to it reluctantly," he said.

But Lucas said Citizens is often the only choice, especially for people with homes more than 20 years old.

Last year, the Legislature held two special sessions focused on insurance, leading to new regulations aimed at stemming a tide of property claim lawsuits industry leaders claim are bankrupting companies. In 2021, OIR commissioner David Altmaier sent a letter to the Legislature saying that, while Florida accounts for 8% of claims in the country, the state had 76% of claims lawsuits.

Yang says that seems to be more of a problem with the companies than the homeowners. "If they didn't deny the claims, they wouldn't have this problem," he said.

Lucas, however, says he's seen positive effects from the new laws already. "Other carriers are opening up a little," he said, though he said it was still anecdotal.

Peltier said the company expects to hit a record 1.7 million policies this year in spite of the new laws.

Maguire said she's happy the government did something to keep companies in the state as she's had two previous insurers stop offering policies in Florida in the last five years. She just wishes that the costs would come down.

"The governor miraculously helped all the insurance companies stay here," she said. "That's a good thing, but he didn't do anything to help us."

Want to reach out? Email tfraser@orlandosentinel.com. Follow TIFraserOS on Twitter.

**FDOT**  
**PUBLIC MEETING**  
 When: Thursday, March 23, 2023, at 5:30 p.m.  
 Where:  
 • Virtually on GoTo Webinar  
 • By phone at 914-614-3221 with passcode 177-025-108  
 • In person at Longwood Community Center  
 Financial Project Identification (FPID) Nos. 441015-1 and 443838-1

**S.R. 434 Safety Improvements, Seminole County**  
 The Florida Department of Transportation (FDOT) will hold a public meeting regarding project plans on State Road (S.R.) 434 from east of Rangeline Road to west of Talmo Street (FPID: 441015-1) and from west of Oleander Street to east of East Street (FPID: 443838-1) on Thursday, March 23, 2023, at 5:30 p.m. The purpose of this project is to improve mobility, promote safety, and extend the longevity of S.R. 434. FDOT is offering multiple ways to participate in the live meeting.  
**Virtual:** Join from a computer, tablet, or mobile device for free and listen to the live presentation over the internet. Advance registration at <https://attendee.gotowebinar.com/register/8277174538554092811> is required. Participants will receive an email with information about joining the meeting online. Please note, Internet Explorer cannot be used to register or attend this webinar. If joining online, please allow adequate log-in time to view the presentation in its entirety.  
**Phone (Listen Only):** Join the meeting in listen-only mode by dialing 914-614-3221 and entering the passcode 177-025-108 when prompted.  
**In-Person Open House:** Attend in person at the Longwood Community Center, 200 W. Warren Ave., Longwood, FL 32750, anytime between 5:30 p.m. and 7 p.m. to view a looping presentation and project exhibits. If attending in person, please remember to follow all safety and sanitation guidelines. If you are feeling unwell, please consider attending the meeting virtually or by phone.  
 All meeting materials and the presentation will be available on the project website at [www.cfrroads.com/project/441015-1](http://www.cfrroads.com/project/441015-1) and [www.cfrroads.com/project/443838-1](http://www.cfrroads.com/project/443838-1) before the meeting.  
 Persons with disabilities who require accommodations under the Americans with Disabilities Act (ADA), or persons who require translation services (free of charge), should contact Derek Dean by phone at 386-943-5161, or via email at [Derek.Dean@dot.state.fl.us](mailto:Derek.Dean@dot.state.fl.us) at least seven (7) days prior to the meeting. If you are hearing or speech impaired, please contact us by using the Florida Relay Service, 1-800-955-8771 (TDD) or 1-800-955-8770 (Voice).  
 Public participation is solicited without regard to race, color, national origin, age, sex, religion, disability, or family status. Persons wishing to express their concerns relative to FDOT compliance with Title VI may do so by contacting Melissa McKinney, FDOT District Five Title VI Coordinator at [Melissa.McKinney@dot.state.fl.us](mailto:Melissa.McKinney@dot.state.fl.us).  
 For more information, please contact FDOT Project Manager Derek Dean at 386-943-5161, email at [Derek.Dean@dot.state.fl.us](mailto:Derek.Dean@dot.state.fl.us), or U.S. mail at Florida Department of Transportation, 719 S. Woodland Blvd., MS 542, DeLand, FL 32720.



# **APPENDIX B**





# Osceola Transportation

Southeast Area Transportation Study – SEATS

Community Information Meeting  
March 22, 2023



## Title VI Compliance

Osceola County values diversity and welcomes input from all interested parties regardless of cultural identity, background, or income level. Osceola County shall not exclude participation in, deny benefits of, or subject to discrimination anyone on the grounds of race, color, national origin, sex, age, disability, religion, or familial status.

For questions about Title VI,  
please contact:

Civil Rights Program Coordinator  
1 Courthouse Square, Suite 4200  
Kissimmee, FL 34741  
407-742-1200 or  
TTD: 800-955-8771  
[ADA.Coordinator@osceola.org](mailto:ADA.Coordinator@osceola.org)



# More About SEATS



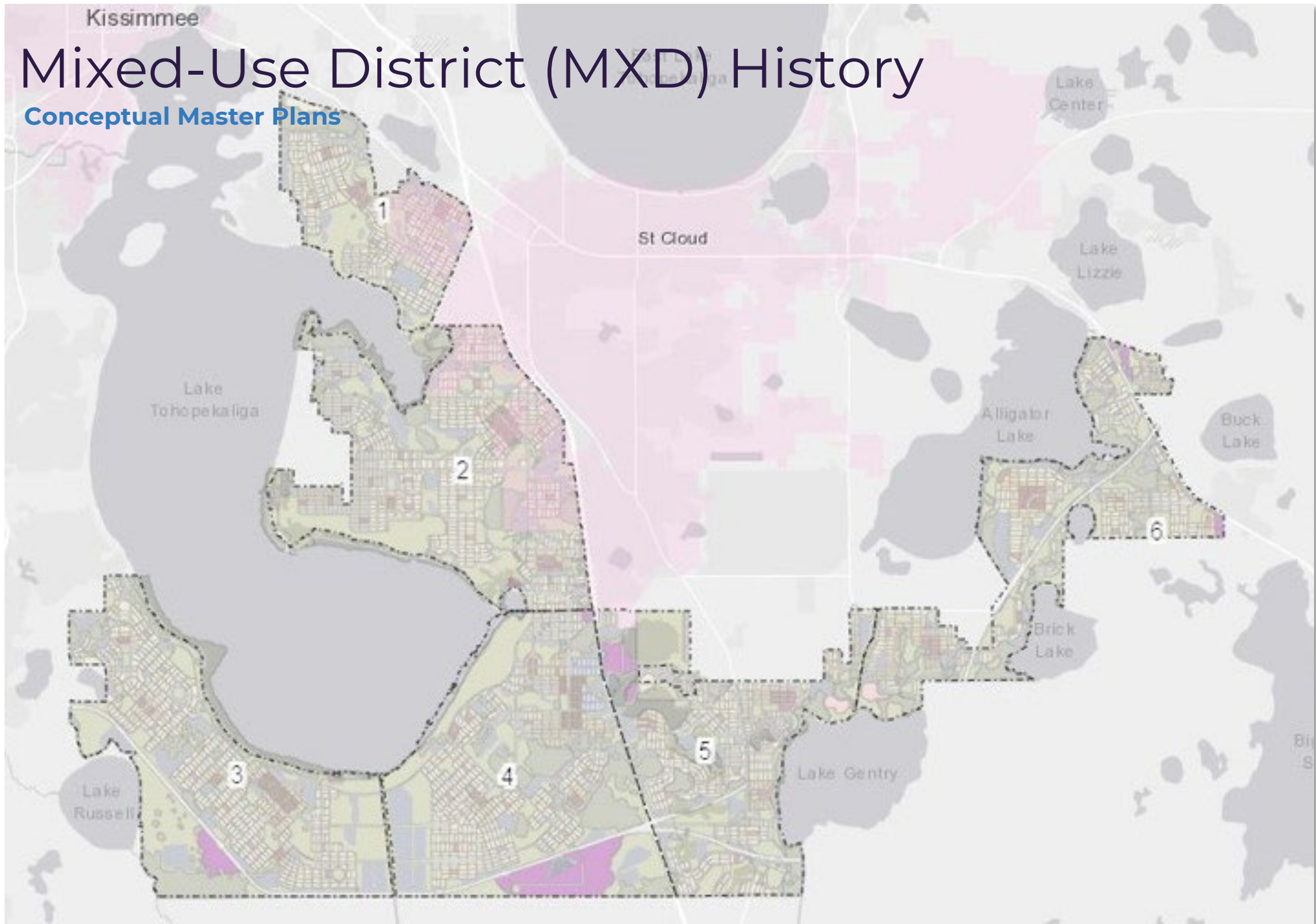
- Evaluate transportation network
- Identify impact to the network
- Identify number of lanes needed
- Identify timing and phasing of needed improvements
- Impact on specific roadway segments



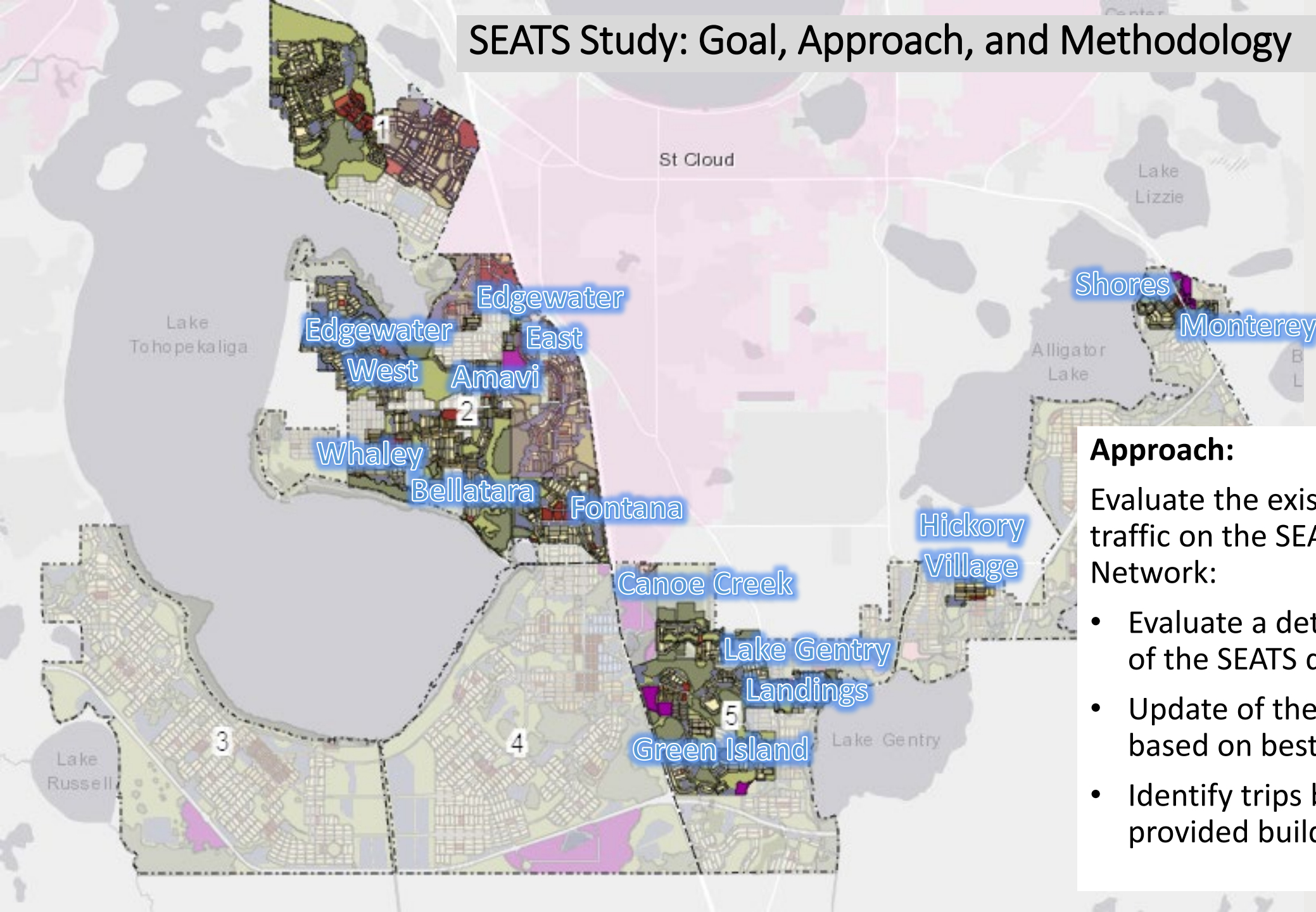


# Mixed-Use District (MXD) History

Conceptual Master Plans



# SEATS Study: Goal, Approach, and Methodology



## Approach:

Evaluate the existing and projected traffic on the SEATS Roadway Network:

- Evaluate a detailed 2045 buildout of the SEATS developments
- Update of the roadway network based on best available data
- Identify trips based on developer provided buildout data



# SEATS Traffic Volumes (Sample Corridor)

Southeast Area Transportation Study – SEATS

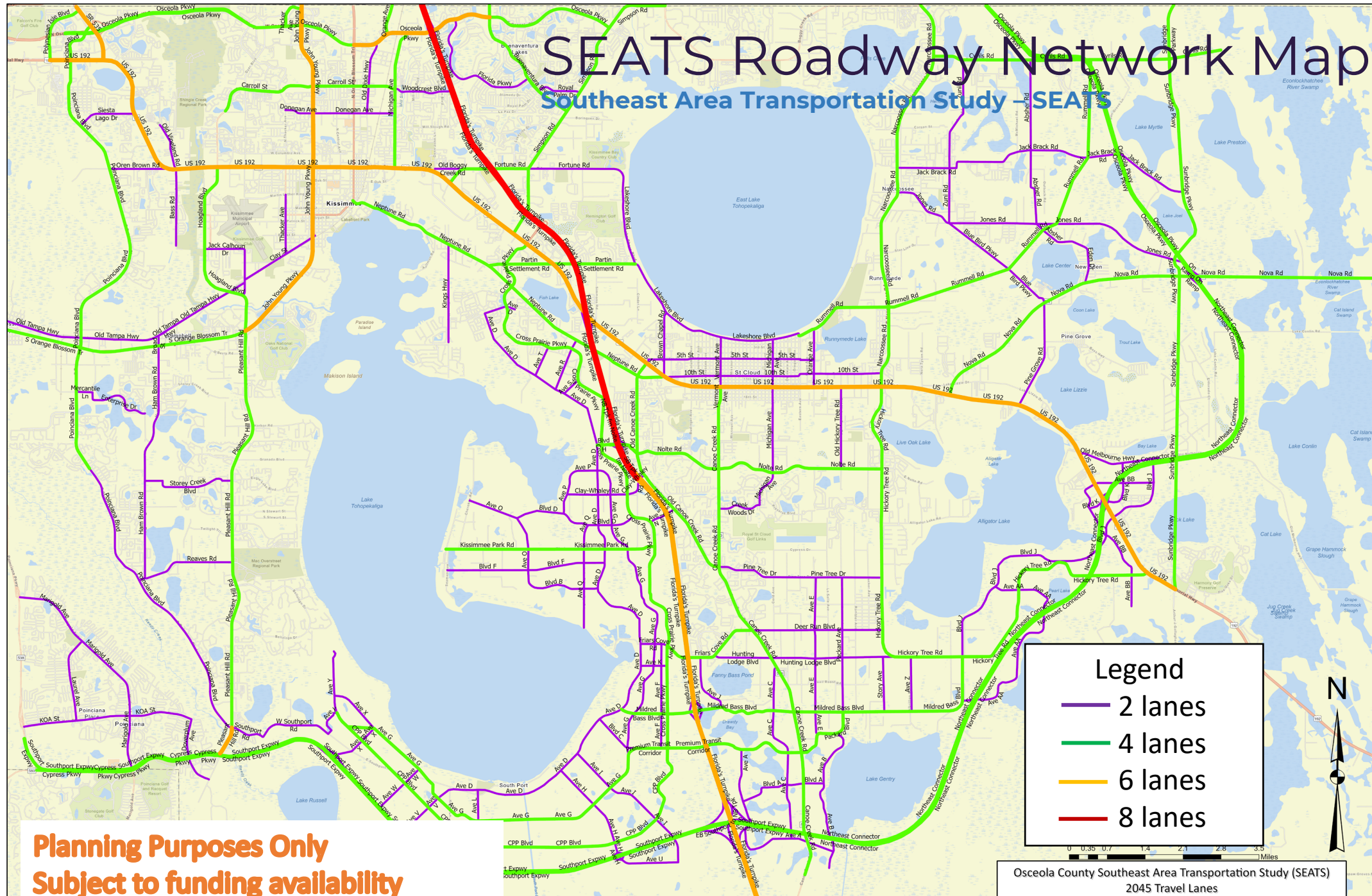
<u>Segment</u>	<u>Current No. of Lanes</u>	<u>2045 No. of Lanes</u>	<u>TRIPS</u>			
			<u>Current Traffic</u>	<u>Other Development Traffic</u>	<u>Development Traffic</u>	<u>Total Volume</u>
Kissimmee Park Road						
End of Roadway to Ave O	2	4	1,254	6,023	996	8,273
Ave O to Ave Q	2	4	2,513	8,105	6,012	16,630
Ave Q to Ave D	2	4	2,513	10,779	7,479	20,771
Ave D to Ave G	2	4	2,513	19,642	18,387	40,542
Ave G to Cross Prairie Pkwy	2	4	2,513	20,726	19,785	43,024





# SEATS Roadway Network Map

## Southeast Area Transportation Study - SEATS



**Planning Purposes Only**  
**Subject to funding availability**

**Legend**

- 2 lanes
- 4 lanes
- 6 lanes
- 8 lanes

0 0.35 0.7 1.4 2.1 2.8 3.5 Miles

Osceola County Southeast Area Transportation Study (SEATS)  
2045 Travel Lanes



# SEATS Roadway Phasing Plans

## Background



### **Goal:**

Understand roadway improvement priorities.

### **Approach:**

Evaluate the roadway segment needs for five-year intervals based on the:

- Detailed buildout/phasing plans of the SEATS developments.
- Estimated roadway segment traffic operations (i.e. Level of Service, volume to capacity ratio).
- Expected travel patterns.

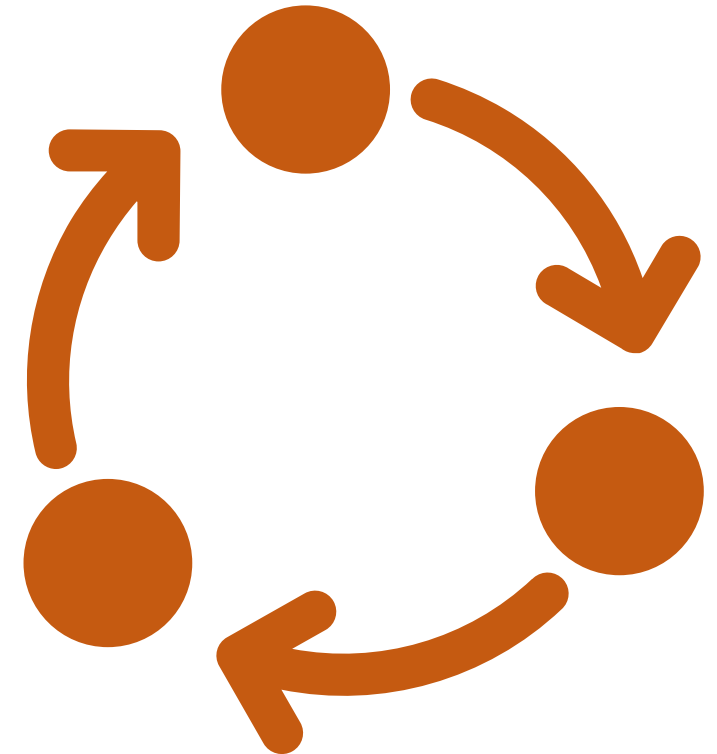


# SEATS Roadway Phasing Plans

## Background

### Detailed Methodology:

- Developed roadway segment analysis spreadsheet based on the expected roadway characteristics for sensitivity analysis.
- Developed year 2035, 2040, and 2045 modeling scenarios (socio-economic data and roadway network), using the approved Osceola 2045 SEATS travel demand model.
- Analyzed the preliminary roadway segment performance for year 2035, 2040, and 2045.
- Evaluated the roadway segment needs for the corresponding year, adjusted the roadway network as needed and re-run the travel demand model scenario.

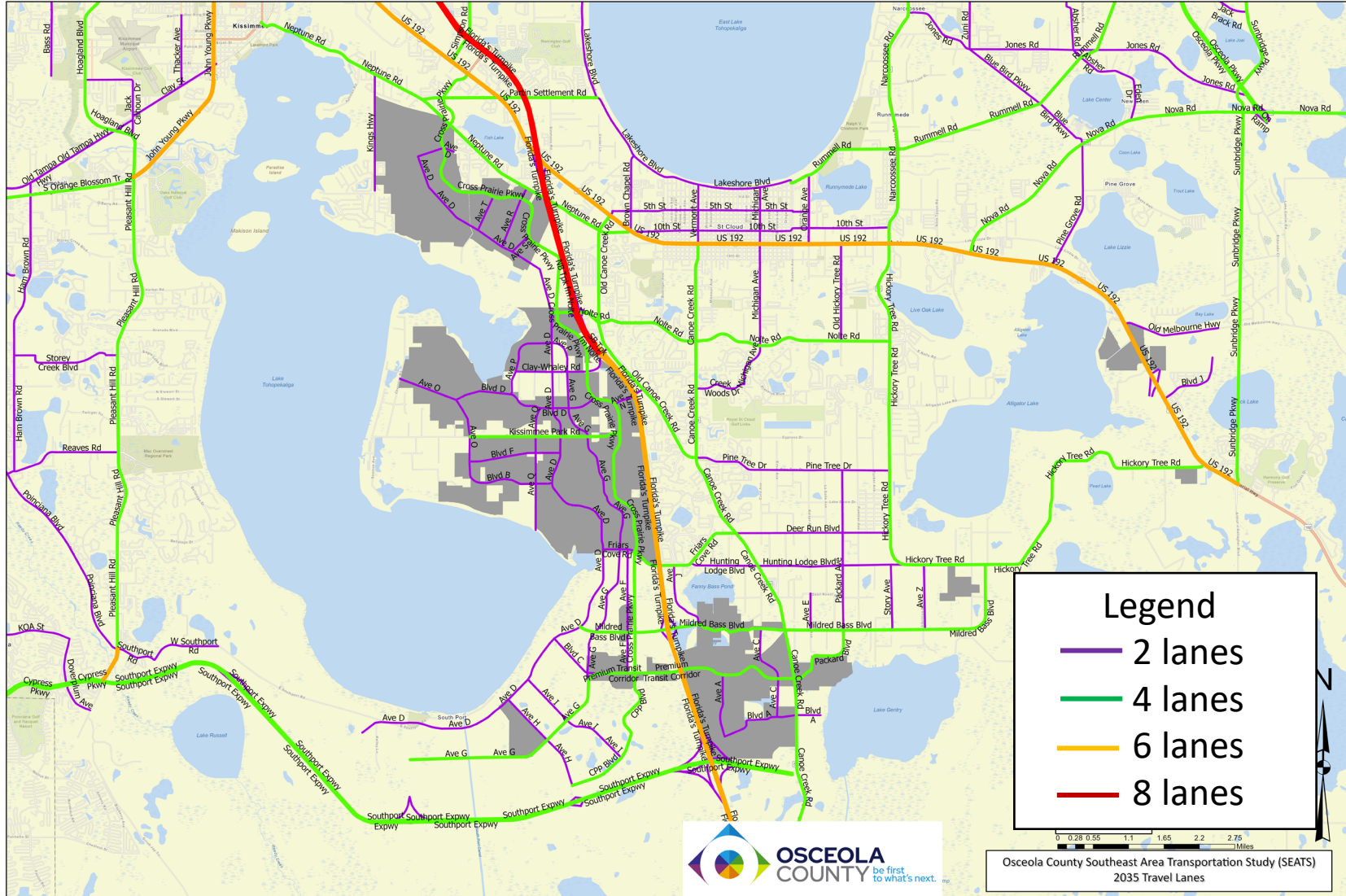






# SEATS Roadway Phasing Plan 2035 Map

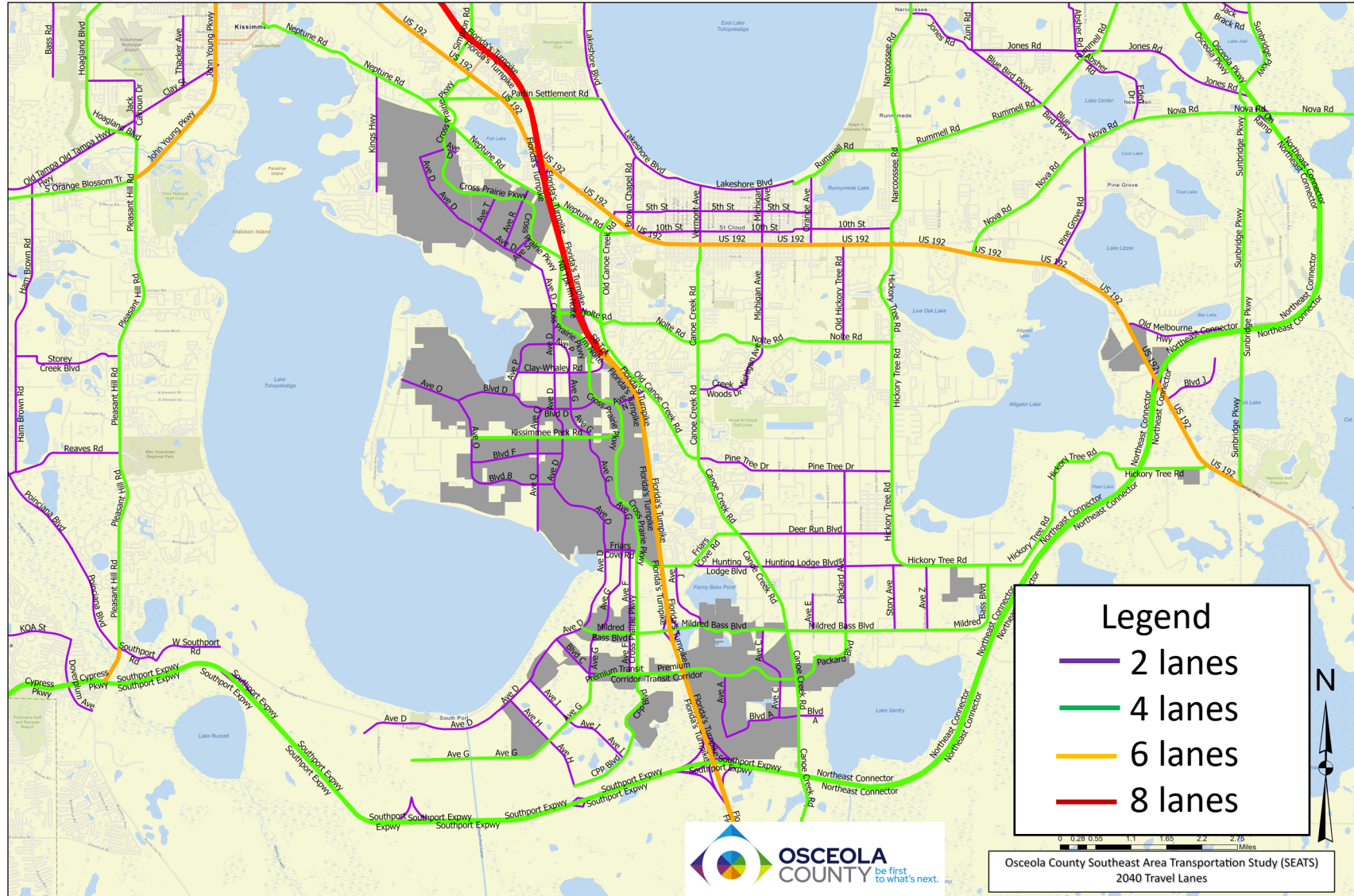
## Southeast Area Transportation Study – SEATS





# SEATS Roadway Phasing Plan 2040 Map

## Southeast Area Transportation Study – SEATS

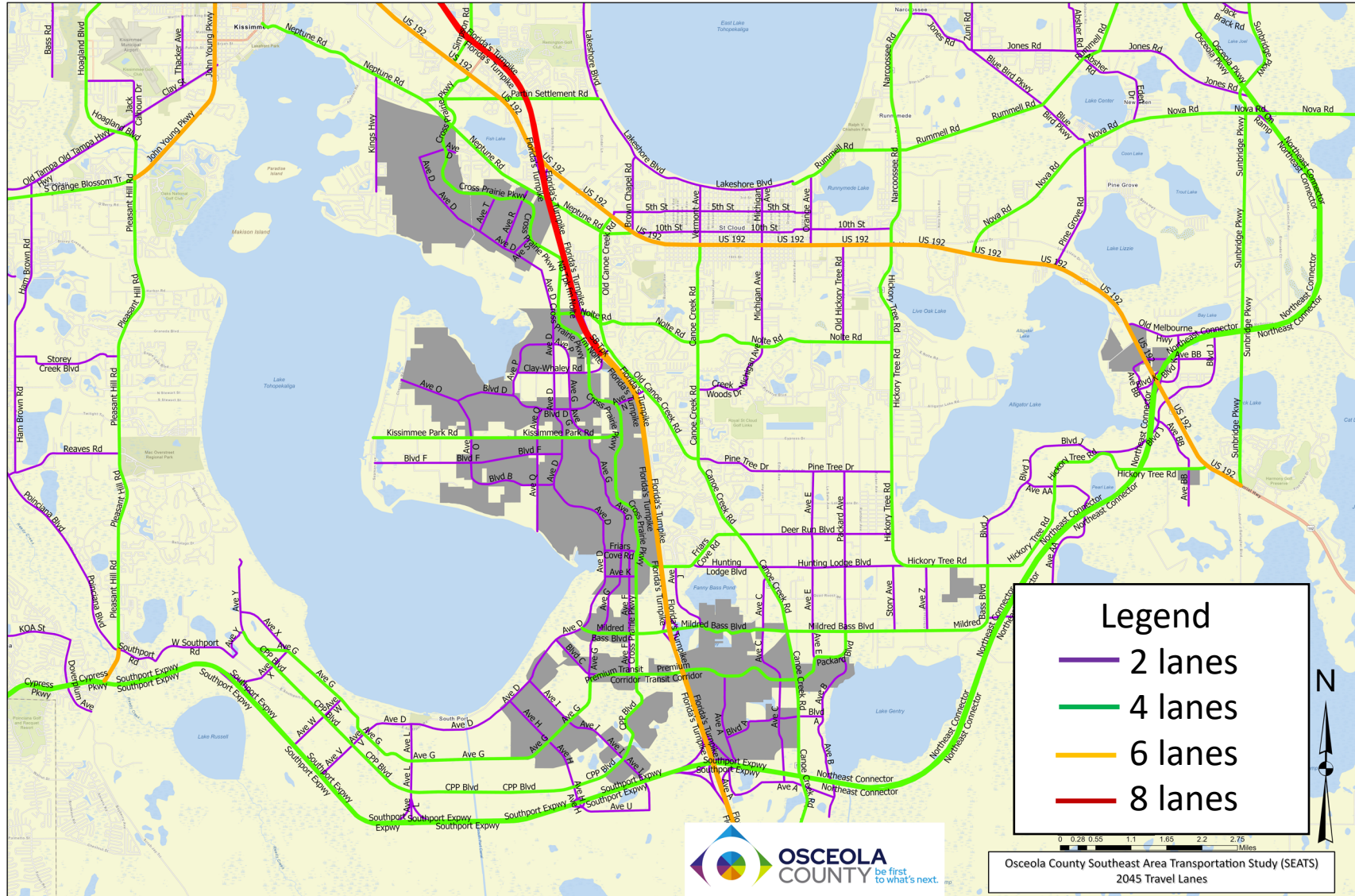






# SEATS Roadway Phasing Plan 2045 Map

## Southeast Area Transportation Study – SEATS







# JPA Transportation Implementation

Osceola County & City of St. Cloud

## Joint Planning Area Transportation Implementation (JPA-TI) Activities:

- Initial Roadway Maintenance Transfer
- JPA Transportation Inter-Local Agreement (ILA)
- Future Roadway Maintenance Transfer
- Initial Roadway Build-Out Coordination
- Joint Mobility Fee Study Update

- Consider public comments
- Finalize SEATS analysis and related Phasing Plan
- Present to the Osceola County Commissioners *(Planned for April 17<sup>th</sup>)*
- Present to St. Cloud City Council *(Planned for April 27<sup>th</sup>)*
- Coordinate developer agreements
- Coordinate with St. Cloud on the JPA-TI




**WHAT'S  
NEXT?**



# How to Submit Your Comments

Southeast Area Transportation Study – SEATS

- Fill out a printed comment form at the meeting
- Email comments to [Joshua.Devries@osceola.org](mailto:Joshua.Devries@osceola.org)
- Please return any comments by April 3, 2023, to be included in the meeting's public record.



Southeast Area Transportation Study (SEATS)  
Community Open House  
Wednesday, March 22, 2023

Project Number: PBA-21-12706-DG

**PUBLIC COMMENT FORM**

Name \_\_\_\_\_ Phone: \_\_\_\_\_  
Address: \_\_\_\_\_  
City: \_\_\_\_\_ State: \_\_\_\_\_ Zip: \_\_\_\_\_  
Email: \_\_\_\_\_

---

Please use this comment form to express your opinions regarding the Southeast Area Transportation Study (SEATS). You may also email Osceola County's Director of Transportation Planning, Joshua DeVries, directly at [Joshua.Devries@osceola.org](mailto:Joshua.Devries@osceola.org). Comments are always welcome. However, comments received by April 3, 2023, will become part of the record for this meeting.

**COMMENTS:**

\_\_\_\_\_  
\_\_\_\_\_  
\_\_\_\_\_  
\_\_\_\_\_  
\_\_\_\_\_  
\_\_\_\_\_  
\_\_\_\_\_  
\_\_\_\_\_  
\_\_\_\_\_  
\_\_\_\_\_

Please send comments or questions via email or U.S. Mail to:

Mr. Joshua DeVries, AICP  
Osceola County Director of  
Transportation Planning  
1 Courthouse Square, Suite 3100  
Kissimmee, FL 34741  
[Joshua.Devries@osceola.org](mailto:Joshua.Devries@osceola.org)





## For More Information

**Joshua DeVries, AICP, Director**  
Transportation Planning  
Osceola County  
Transportation and Transit  
1 Courthouse Square, Suite 3100  
Kissimmee, FL 34741  
407-742-7813  
[Joshua.DeVries@Osceola.org](mailto:Joshua.DeVries@Osceola.org)

**Steven Kane, P.E., Director**  
Osceola County  
Transportation and Transit  
1 Courthouse Square, Suite 3100  
Kissimmee, FL 34741  
407-742-0513  
[Steven.Kane@Osceola.org](mailto:Steven.Kane@Osceola.org)



Thank you



be first  
to what's next.

# APPENDIX C





# Southeast Area Transportation Study (SEATS)

## Community Information Meeting

### Sign-In Sheet

Wednesday, March 22, 2023  
 6 p.m. – 7:30 p.m.  
 St. Cloud Community Center  
 3101 17<sup>th</sup> Street  
 St. Cloud, FL 34769

Name (please print)	Organization (please print)	Mailing Address (please print)	E-mail Address/Phone (please print)
Elizabeth Grace		6665 Bass Hwy. St. Cloud	esgrace65@cfl.rr.com 407-414-8935
Chantel Cimello		4755 Jay Dr St. Cloud 34772	ccivitello@gmail.com
Thomas Williams		2750 River Creek Ln, cloud <sup>st</sup>	twill68.twiii@gmail.com
<del>CHAD DEAN</del>			
Lisa Allsbury		4155 Fanny Bass Rd.	
Sean Allsbury		4155 Fanny Bass Rd.	
HOWARD GILK		3518 CAJUPRES LOOP	H6143@comcast.com
Liana Vadez		3885 Wind Dancer Cir. St. Cloud 34772	
PAUL SCHWARTZKOPF		4285 CYPRESS DR, ST CLOUD, 34772	
Don & Rosemary Schmidt		2265 James Dr St. Cloud, FL 34771	schmidtrose@hotmail.com 407.908.9507 Don



# Southeast Area Transportation Study (SEATS)

## Community Information Meeting

### Sign-In Sheet

Wednesday, March 22, 2023  
6 p.m. – 7:30 p.m.  
St. Cloud Community Center  
3101 17<sup>th</sup> Street  
St. Cloud, FL 34769

Name (please print)	Organization (please print)	Mailing Address (please print)	E-mail Address/Phone (please print)
CINDY & FRED RABE	—	6621 BASS HWY ST CLOUD, FL 34771	CFR@C.KERSO 321- YAHOO.COM 402-2688
Johanna Westein		401 Minnesota Ave St. Cloud, FL 34769	jwestein@ mail.com
Dinaida Fortalati	C.F.A. Kissimmee	125 Guadalupe Dr Kissimmee	dinaida75@gmail.com
Chad + Lindsey Dean		3821 opal cir. St Cloud FL	linds228@gmail.com
Peg Cochran	Public	2245 James Dr. St Cloud FL	shkaleg@gmail.com
Dora Diaz	public	4755 Mallard Drive St. Cloud	407-802-8682
Nelson Marrero	public	" "	407-319-0683
Robin Davis	Public	3055 Vest Rd. SC 34712	407-744-8634
Bruce Trainor	—	1515 Vermont Ave.	407 718 0974
Steve Romkey	Public	3040 Rambler Ave	407-832-8097





# Southeast Area Transportation Study (SEATS)

## Community Information Meeting

### Sign-In Sheet

Wednesday, March 22, 2023  
 6 p.m. – 7:30 p.m.  
 St. Cloud Community Center  
 3101 17<sup>th</sup> Street  
 St. Cloud, FL 34769

Name (please print)	Organization (please print)	Mailing Address (please print)	E-mail Address/Phone (please print)
Barbara T. Webber		4320 Mildred Bass Rd St. Cloud, FL 34772	barbarawebber124@gmail.com
Kenneth A. Webber		4320 Mildred Bass Rd St. Cloud, FL 34772	barbarawebber124@gmail.com
J JAWECZEK		7159 OAKGLEN TRAIL ST. CLOUD	JOSEPH.JAWECZEK@GMAIL.COM
EDY. TOOTH		2175 JAMES DR. ST. CLOUD, FL	EFTOOTH@GMAIL.COM
Angel Caba		2004 Fountain Blvd Kissimmee FL 34741	Cabangel1@yahoo.com
Mike Liquori		3327 DEER WATER CT ORLANDO, FL 32826	
Matt Gill		3341 Bronckon Fern Drive Harmony FL 34769	MATT_GILL@HOTMAIL.COM





# Southeast Area Transportation Study (SEATS)

## Community Information Meeting

### Sign-In Sheet

Wednesday, March 22, 2023  
 6 p.m. – 7:30 p.m.  
 St. Cloud Community Center  
 3101 17<sup>th</sup> Street  
 St. Cloud, FL 34769

Name (please print)	Organization (please print)	Mailing Address (please print)	E-mail Address/Phone (please print)
DAVID & SANDRA Montgomery	US CITIZEN	2180 Pine Terrace Saint Cloud FL	N/A
Carric + Robert Tyrrell		Pinetree	N/A
Mark + Nancy Gregory		5855 Michele Ln St Cloud 34772	nlgregory84@yahoo.com
ISSAC Cabrera		2481 Seven Oaks Dr St. Cloud FL 34772	N/A
JEFF PERRY	—	6130 WATERFIELD WAY 34771 + DOWNTOWN ST. CLOUD	JEFFPERRY@ MYFLORIDAMOVE.COM
JACK KAPLAN		702 Avocado St, St. Cloud 34769	jk3944@yahoo.com
BOBBY KISSELBACK		KISSELBACK FORD 1118 13 <sup>th</sup> St St Cloud	bobbyk@KISSELBACKFORD.com
ANITA AVERY		ST. CLOUD 6080 Durbin Rd	anitaavery@yahoo.com
SCOTT SEVER		2510 ZUNI RD ST. CLOUD, FL	SCOTTSEVERUSA@YAHOO.COM







# Southeast Area Transportation Study (SEATS)

## Community Information Meeting

### Sign-In Sheet

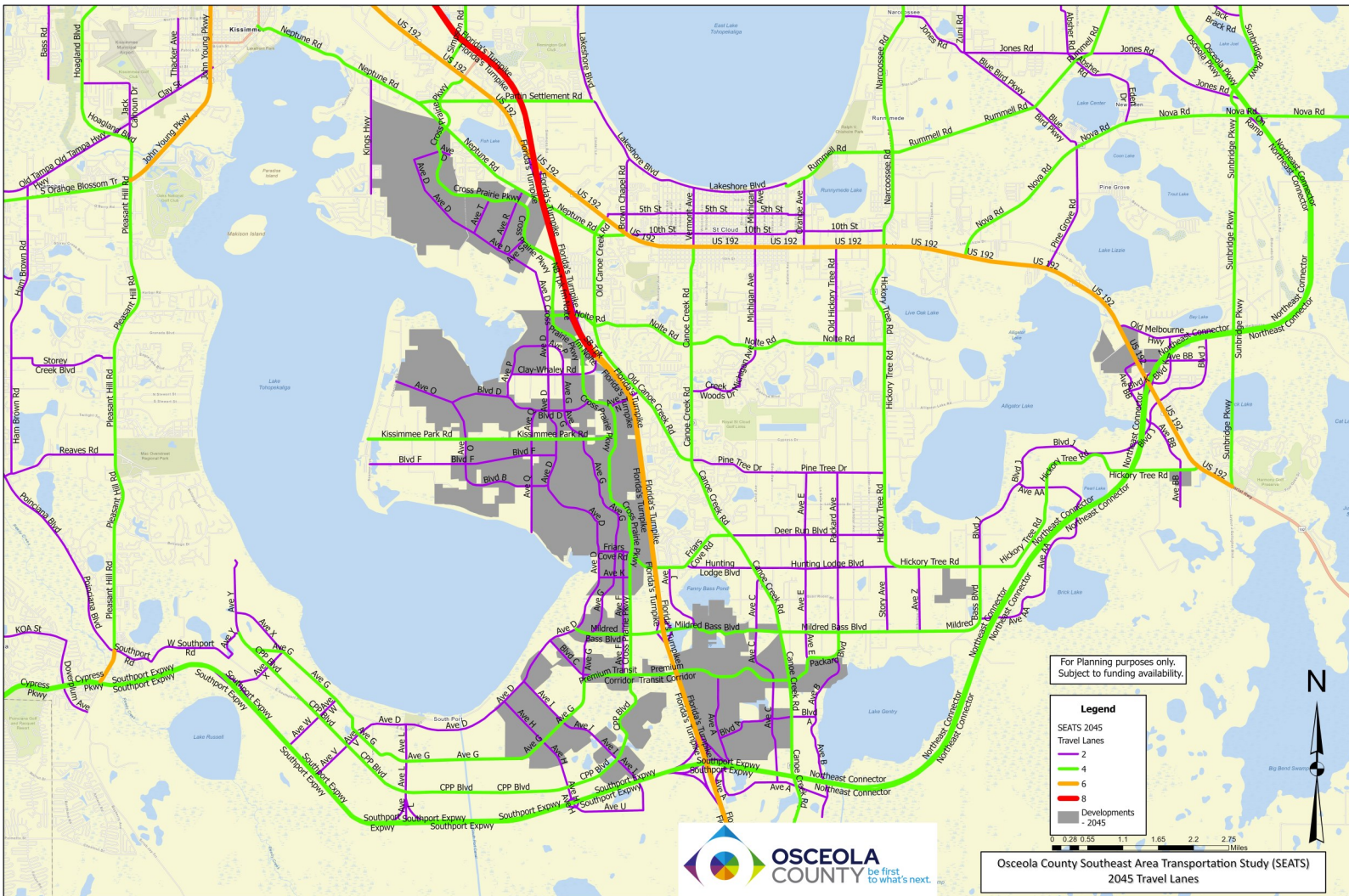
Wednesday, March 22, 2023  
 6 p.m. – 7:30 p.m.  
 St. Cloud Community Center  
 3101 17<sup>th</sup> Street  
 St. Cloud, FL 34769

Name (please print)	Organization (please print)	Mailing Address (please print)	E-mail Address/Phone (please print)
Virginia Marie DeVault @	⊖	913 Michigan Avenue St. Cloud	devaultgms@yahoo.com.
JAMES TAYLOR		8258 Northlake Pkwy	EMAIL4Jmt@GMAIL.com
Christina Ricchi		2425 McMichael Rd	Kia@centerlineart.com
Terese Johnson		3810 Gator Bay Ln	teresej0714@gmail.com
CHARLIE DECARLO		3039 ELBIB DR	YAHOO, CHARLIE15357@COM
Kern Trace			KERN@KERTHTRACE.com
Duane Norman		3551 Buckingham Ct St. Cloud 34772	Duanedman@gmail.com
Andrew Jung			AJEANG6677@gmail.com



# **APPENDIX D**

# Southeast Area Transportation Study Community Open House March 22, 2023



2045 Southeast Area Transportation Study Network Map

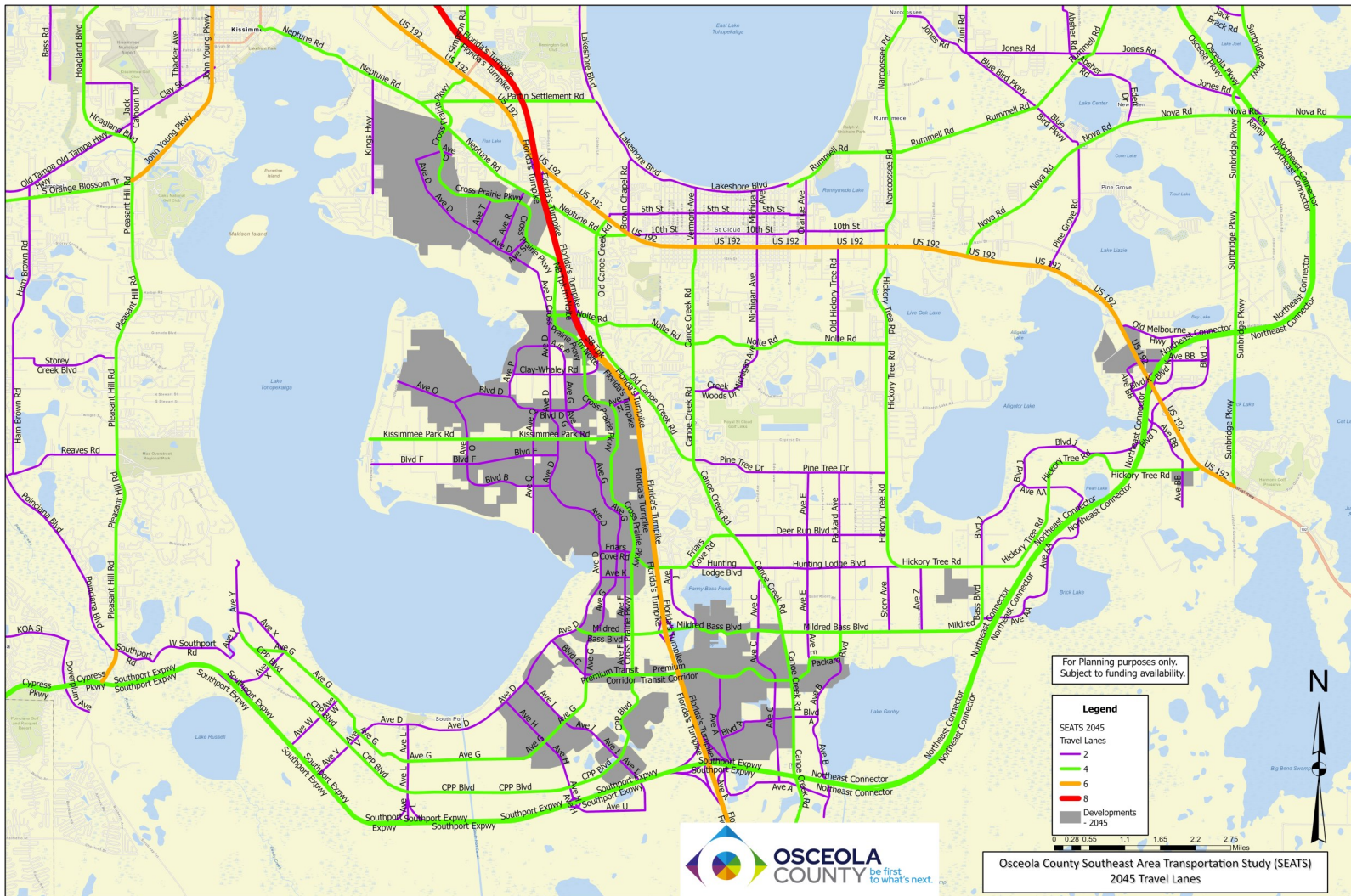
For more information, please contact:

**Joshua DeVries, AICP, Director**  
 Transportation Planning  
 Osceola County  
 Transportation and Transit  
 1 Courthouse Square, Suite 3100  
 Kissimmee, FL 34741  
 407-742-7813  
[Joshua.DeVries@Osceola.org](mailto:Joshua.DeVries@Osceola.org)

**Steven Kane, P.E., Director**  
 Osceola County  
 Transportation and Transit  
 1 Courthouse Square, Suite 3100  
 Kissimmee, FL 34741  
 407-742-0513  
[Steven.Kane@Osceola.org](mailto:Steven.Kane@Osceola.org)



# Estudio de Transportacion del Área Sureste Jornada de puertas abiertas Miércoles, 22 de Marzo del 2023



Mapa de la red de estudio de transportacion del área sureste del 2045

Para obtener más información, póngase en contacto:

**Joshua DeVries, AICP, Director**  
Planificacion de Transportacion  
Condado de Osceola  
Transportacion y Tránsito  
1 Courthouse Square, Suite 3100  
Kissimmee, FL 34741  
407-742-7813  
[Joshua.DeVries@Osceola.org](mailto:Joshua.DeVries@Osceola.org)

**Steven Kane, P.E., Director**  
Condado de Osceola  
Transportacion y Tránsito  
1 Courthouse Square, Suite 3100  
Kissimmee, FL 34741  
407-742-0513  
[Steven.Kane@Osceola.org](mailto:Steven.Kane@Osceola.org)





**Southeast Area Transportation Study (SEATS)  
Community Open House**

**Wednesday, March 22, 2023**

Project Number: PBA-21-12706-DG

**PUBLIC COMMENT FORM**

Name \_\_\_\_\_ Phone: \_\_\_\_\_

Address: \_\_\_\_\_

City: \_\_\_\_\_ State: \_\_\_\_\_ Zip: \_\_\_\_\_

Email: \_\_\_\_\_

Please use this comment form to express your opinions regarding the Southeast Area Transportation Study (SEATS). You may also email Osceola County's Director of Transportation Planning, Joshua DeVries, directly at [Joshua.DeVries@osceola.org](mailto:Joshua.DeVries@osceola.org). Comments are always welcome. However, comments received by April 3, 2023, will become part of the record for this meeting.

**COMMENTS:**

---

---

---

---

---

---

---

---

---

---

---

---

---

---

---

---

---

---

---

---

---

---

---

---

Please send comments or questions  
via email or U.S. Mail to:

Mr. Joshua DeVries, AICP  
Osceola County Director of  
Transportation Planning  
1 Courthouse Square, Suite 3100  
Kissimmee, FL 34741  
[Joshua.DeVries@osceola.org](mailto:Joshua.DeVries@osceola.org)



**Estudio de Transportación del Área Sureste Jornada  
de puertas abiertas**

**Miércoles, 22 de Marzo del 2023**

Número de proyecto: PBA-21-12706-DG

**Formulario de comentarios  
del público**

Nombre \_\_\_\_\_ Teléfono: \_\_\_\_\_

Dirección: \_\_\_\_\_

Ciudad: \_\_\_\_\_ Estado: \_\_\_\_\_ Código postal: \_\_\_\_\_

Correo electrónico: \_\_\_\_\_

Por favor, use este formulario de comentarios para expresar sus opiniones sobre el Estudio de Transportación del Área Sureste o SEATS (Southeast Area Transportation Study, por sus siglas en inglés). También puede enviar un correo electrónico al Director de Planificación de Transportación del Condado de Osceola, Joshua DeVries, directamente al correo [Joshua.DeVries@osceola.org](mailto:Joshua.DeVries@osceola.org). Los comentarios son siempre bien recibidos. Sin embargo, los comentarios recibidos antes del 3 de abril de 2023 serán incluidos en el registro para esta reunión.

**Comentarios:**

---

---

---

---

---

---

---

---

---

---

---

---

---

---

---

---

---

Por favor envíe comentarios o preguntas al correo electrónico o correo de los EE. UU. dirigidos a:

Sr. Joshua DeVries, AICP  
Condado de Osceola Director de Planificación de Transportación  
1 Courthouse Square, Suite 3100  
Kissimmee, FL 34741  
[Joshua.DeVries@osceola.org](mailto:Joshua.DeVries@osceola.org)

# **APPENDIX E**



**SOUTHEAST AREA TRANSPORTATION STUDY (SEATS): COMMENT MATRIX**

DATE	NAME	EMAIL	ADDRESS	PHONE	COMMENT / QUESTION
3/22/2023	Dinaida Portalatin	<a href="mailto:dinaida75@gmail.com">dinaida75@gmail.com</a>	125 Guadalajara Drive Kissimmee, FL 34743	407-627-7010	I think that the most urgent thing is to build other roads that connect with Poinciana.
3/22/2023	Thomas Williams III	<a href="mailto:twil68.twiii@gmail.com">twil68.twiii@gmail.com</a>	2750 River Creek Lane St. Cloud, FL 34771	757-532-0445	Will there be any consideration to build connecting roadways across lakes? Will there be any consideration including light rail and bus lanes to reduce total traffic congestion? What is the impact from displacement of current residents affected by the transportation plan? Does the plan include funding improvement to current secondary feeder roads that would connect to any new or expanding corridors?
3/22/2023	Elizabeth Grave	<a href="mailto:esgrace65@cfl.rr.com">esgrace65@cfl.rr.com</a>	6665 Bass Highway St. Cloud, FL 34771	407-414-8935	As a 30 year resident of St. Cloud, I have thoroughly enjoyed the beauty and serenity of Lake Lizzie Preserve and the Alligator Chain of Lakes. I understand that roadways are necessary, but each addition and expansion corrupts the beauty, serenity and cleanliness of the surrounding area. Please respect the chain and especially Brick Lake. Noise pollution has grown exponentially in the Preserve as well as on the lakes. Any time you can hear or see the roadways, the beauty and serenity are compromised. Of course, the debris and chemical pollution are of obvious concern as well. Main points of concern: being able to see and hear the expressway on the Alligator Lake, Brick Lake and Lake Lizzie Preserve.

3/22/2023	Teresa Johnson	<a href="mailto:teresaj714@gmail.com">teresaj714@gmail.com</a>	3810 Gator Bay Lane St. Cloud, FL 34772	407-230-5806	Why is the city/county allowing so much growth and new developments when our infrastructure cannot support it. It takes me 45-60 minutes to reach the Kissimmee Park Turnpike entrance in the morning (2.5 miles from my house) and an hour to exit the turnpike in the evening at Kissimmee Park. Taking the sunrail from Kissimmee or Tupperware (?) is just as difficult since Old Canoe Creek and Neptune Roads are so heavily congested.
3/22/2023	Lindsey Dean	<a href="mailto:lindsz28@gmail.com">lindsz28@gmail.com</a>	3821 Opal Circle St. Cloud, FL 34772	443-765-4430	Prioritize the expansion of turnpike/additional interchanges. Place a moratorium on new subdivisions until such time as the traffic congestion is alleviated. Developer requirements for impact studies/fees/etc. prior to subdivision approval. (Ex: have funds reserved in escrow for road widenings/etc for a planned sub prior to giving final approval)
3/22/2023	Chad Dean	<a href="mailto:cdean787@aol.com">cdean787@aol.com</a>	3821 Opal Circle St. Cloud, FL 34772	443-375-7924	My opinion is the Turnpike widening and adding additional access ramps should be the priority. The traffic on Canove Creek to get to the Turnpike only has one access point causing back ups that take 45 min to get to Turnpike from Canove Creek and Pine Tree.

3/22/2023	Nelson Marrero	<a href="mailto:nelcito523@gmail.com">nelcito523@gmail.com</a>	4755 Mallard Drive St. Cloud, FL 34772	407-319-0683	<p>Stop building sidewalks to nowhere. I did not see the Lynx transportation system involved in the study. Street light are needed in the Manor. Pine Tree and Deer Run need lights and sidewalks - too many people walking the road at night. Public roads - no more tolls In the next public comment present the method and data used for research. From Deer Run to Universal Studios, 2.68 round trip fee on the Turnpike per day. 13.40 per week. 52 week work year is 696.80 in tolls. Assume median salaray in Orlando in Orlando \$55,000 Actual take home \$45,000 Standard living deduction -12,500</p> <p>-----</p> <p>Potential for consumer needs \$33,000 Current sales tax %7.5 - \$2,475 Potential 1 penny tax raise %8.5 - \$2,805</p> <p>-----</p> <p>+5330</p> <p>In conclusion with average salary working in Orlando for 1 year traveling from St. Cloud Manor to Uniniversity 696.80 in tolls. If the county does a 1 penny sales tax increase the same person would expense a \$330 dollar increase in tax. Saving the person \$368 annually. More public roads and transportation.</p>
3/22/2023	Barbara & Ken Webber	<a href="mailto:barbarawebber124@gmail.com">barbarawebber124@gmail.com</a>	4320 Mildred Bass Road St. Cloud, FL 34772		<p>Friars Cove is already ready. Why not open it up to the public? This way, some of the people who have difficulty going north because of the traffic can drive south to enter the Turnpike. Of course it would be helpful for those south of Friars Cove. It seems like a lesser expensive option than some of the other ideas at this point. I understand that everything costs money, but this could be a "quicker" relief to those of us considering relocation because of the current traffic.</p>



4/3/2023	Edward & Karen Toothe	eftoote@gmail.com klttoothe@gmail.com	2175 James Drive Saint Cloud, Florida 34771	407-301-9677 407-729-7053	<p>SEATS Community Open House, Wednesday, March 22, 2023 Project Number: PBA-21-12706-DG</p> <p>Public Comment Form Edward and Karen Toothe, 407-301-9677, 407-729-7053 2175 James Drive, Saint Cloud, Florida 34771 eftoote@gmail.com klttoothe@gmail.com</p> <p>COMMENTS:</p> <p>Nathaniel Kusel and Isai Chavez were extremely professional and helpful with providing information regarding the future projections of transportation plans. We have three major concerns that we would like you to address at your earliest convenience.</p> <p>1. Where and What are the notifications to the general public who are directly involved with proposed developments of residential areas, businesses, parks, and roads, prior to the County Commissioners' vote? What is the criteria for notifications for zoning? Who maintains the records for the votes on land use issues? How can we be included in notification of these proposed developments?  We were absolutely shocked to find out about the 300+ units being built at the intersection of US192 and Nova Road in an already drowning pool of traffic. The new lights that are being installed at that intersection will not alleviate the additional traffic that these new units will bring.  The plans for 25 units per acre on the SE shore of Alligator Lake with a planned community park and proposed boat ramp was also very distressing to hear. What form of notice was given and to whom? When was this discussed and who voted in favor of this development?</p> <p>2. We wholeheartedly object to the proposed path of the CFX South Port Expressway that you documented on your maps at the meeting. We know that our neighbors along the Alligator Chain of Lakes disagree with this proposed path. We know there are other paths that have been presented and ask why they weren't shown on any of the maps.  Who (name of agency and person) oversees notifying the public of meetings that discuss all matters regarding the development of the South Port Expressway?</p>
----------	-----------------------	--	--	------------------------------	---

---

**From:** Shari Curley  
**Sent:** Wednesday, May 3, 2023 12:26 PM  
**To:** barbarawebber124@gmail.com  
**Cc:** Joshua DeVries; Nathaniel T Kusel; Carolyn Fitzwilliam  
**Subject:** SEATS Comment Response



Transportation & Transit Department  
1 Courthouse Square, Suite 3100  
Kissimmee, FL 34741  
[osceola.org](http://osceola.org)  
407-742-0565

May 3, 2023

Barbara & Ken Webber  
[barbarawebber124@gmail.com](mailto:barbarawebber124@gmail.com)

**Subject: Response to Comments**  
**Southeast Area Transportation Study (SEATS)**  
Osceola County

Dear Mr. and Mrs. Webber,

Thank you for attending Osceola County's Southeast Area Transportation Study (SEATS) public meeting on Wednesday, March 22, 2023, and for submitting your questions and comments.

The Florida's Turnpike entrance located on Friars Cove was put in place as an emergency access only, and is signed as such. The entrance was not engineered and built to provide public access to the Turnpike. A number of Turnpike interchanges are being evaluated within the SEATS boundary, including the new proposed Nolte Road Interchange. You can learn more about the Turnpike's projects by going to <https://floridasturnpike.com/turnpike-projects/featured-projects/#1605187495058-7e0a0c1e-878f>. Osceola County and Florida's Turnpike Enterprise are working together to analyze the best location for an interchange near Mildred Bass Road, as well as another potential interchange between Mildred Bass Road and the new Nolte Road interchange; however, exact locations have not been determined at this point. Future project information will be made available on the Turnpike's website as these projects move into future phases.

If you have any questions or comments regarding the SEATS project, please contact me by email at [Joshua.DeVries@osceola.org](mailto:Joshua.DeVries@osceola.org) or by phone at 407-742-7813. You can also contact Osceola County Transportation and Transit Director, Steven Kane, by email at [Steven.Kane@osceola.org](mailto:Steven.Kane@osceola.org) or by phone at 407-742-0513.

Thank you.

*Joshua DeVries*

Joshua DeVries  
Osceola County Transportation Planning Director

---

**From:** Shari Curley  
**Sent:** Wednesday, May 3, 2023 12:28 PM  
**To:** cdean787@aol.com  
**Cc:** Joshua DeVries; Nathaniel T Kusel; Carolyn Fitzwilliam  
**Subject:** SEATS Comment Response



Transportation & Transit Department  
1 Courthouse Square, Suite 3100  
Kissimmee, FL 34741  
[osceola.org](http://osceola.org)  
407-742-0565

May 3, 2023

Chad Dean  
[cdean787@aol.com](mailto:cdean787@aol.com)

**Subject: Response to Comments**  
**Southeast Area Transportation Study (SEATS)**  
Osceola County

Dear Mr. Dean,

Thank you for attending Osceola County's Southeast Area Transportation Study (SEATS) public meeting on Wednesday, March 22, 2023, and for submitting your comments.

We realize the frustration from drivers who are caught in the traffic congestion. That is the reason for this project, to find ways to improve traffic flow and operations on our roadways even as more and more drivers are expected to use our roads. The SEATS project team is taking all comments into consideration as we move forward in this study phase.

Florida's Turnpike Enterprise is already looking into widening the Turnpike in Osceola County and adding a new interchange at Nolte Road. You can learn more about the Turnpike's projects by going to <https://floridasturnpike.com/turnpike-projects/featured-projects/#1605187495058-7e0a0c1e-878f>.

If you have any questions or comments regarding this project, please contact me by email at [Joshua.DeVries@osceola.org](mailto:Joshua.DeVries@osceola.org) or by phone at 407-742-7813. You can also contact Osceola County Transportation and Transit Director, Steven Kane, by email at [Steven.Kane@osceola.org](mailto:Steven.Kane@osceola.org) or by phone at 407-742-0513.

Thank you.

*Joshua DeVries*

Joshua DeVries  
Osceola County Transportation Planning Director



---

**From:** Shari Curley  
**Sent:** Wednesday, May 3, 2023 12:30 PM  
**To:** dinaida75@gmail.com  
**Cc:** Joshua DeVries; Nathaniel T Kusel; Carolyn Fitzwilliam  
**Subject:** SEATS Comment Response



Transportation & Transit Department  
1 Courthouse Square, Suite 3100  
Kissimmee, FL 34741  
[osceola.org](http://osceola.org)  
407-742-0565

May 3, 2023

Dinaida Portalatin  
[dinaida75@gmail.com](mailto:dinaida75@gmail.com)

**Subject: Response to Comments**  
**Southeast Area Transportation Study (SEATS)**  
Osceola County

Dear Ms. Portalatin,

Thank you for attending Osceola County's Southeast Area Transportation Study (SEATS) public meeting on Wednesday, March 22, 2023, and for submitting your comment. You asked for new roads to connect with Poinciana.

The goal of the Southeast Area Transportation Study is to determine the needs on the roadway network and to develop a plan to build the necessary improvements in partnership with new developments. Additionally, Osceola County and its transportation partners have several projects planned to help improve traffic operations on existing roads within Poinciana.

Osceola County is working on a project right now that would widen Poinciana Boulevard from Pleasant Hill Road to Trafalgar Boulevard to 4 lanes. It is expected to help increase traffic flow in that area. You can learn more about that project at <https://www.osceola.org/agencies-departments/transportation-transit/projects/poinciana-blvd/>.

The Central Florida Expressway Authority (CFX) is also conducting a Project Development and Environment (PD&E) Study on the Poinciana Parkway. The goal is to improve the roadway connection from Poinciana Parkway to I-4. You can learn more about that project at <https://www.cfxway.com/agency-information/plans-studies/project-studies/poinciana-parkway-extension/>.

If you have any questions or comments regarding this SEATS project, please contact me by email at [Joshua.DeVries@osceola.org](mailto:Joshua.DeVries@osceola.org) or by phone at 407-742-7813. You can also contact Osceola County Transportation and Transit Director, Steven Kane, by email at [Steven.Kane@osceola.org](mailto:Steven.Kane@osceola.org) or by phone at 407-742-0513.

Thank you.

*Joshua DeVries*

Joshua DeVries  
Osceola County Transportation Planning Director

---

**From:** Shari Curley  
**Sent:** Wednesday, May 3, 2023 12:33 PM  
**To:** eftoother@gmail.com; kltoother@gmail.com  
**Cc:** Joshua DeVries; Nathaniel T Kusel; Carolyn Fitzwilliam  
**Subject:** SEATS Comment Response



Transportation & Transit Department  
1 Courthouse Square, Suite 3100  
Kissimmee, FL 34741  
[osceola.org](http://osceola.org)  
407-742-0565

May 3, 2023

Edward & Karen Toothe  
[eftoother@gmail.com](mailto:eftoother@gmail.com)  
[kltoother@gmail.com](mailto:kltoother@gmail.com)

**Subject: Response to Comments**  
**Southeast Area Transportation Study (SEATS)**  
Osceola County

Dear Mr. and Mrs. Toothe,

Thank you for your interest in Osceola County's Southeast Area Transportation Study (SEATS) and for submitting your questions and comments.

This SEATS project team is working to improve the roads around southeastern Osceola County to help accommodate the future growth. For any questions regarding developments or how they are approved you would need to contact the County Planning and/or Zoning Office at [Planning@osceola.org](mailto:Planning@osceola.org) or [Zoning@osceola.org](mailto:Zoning@osceola.org).

For the SouthPort Connector Study, you would need to contact the Central Florida Expressway Authority (CFX). The project webpage is <https://www.cfxway.com/agency-information/plans-studies/project-studies/southportconnectorexpressway/>. There is an email and phone number on the webpage that you can use to contact them with any questions.

The Florida Department of Transportation's (FDOT) District 5 oversees the traffic management and maintenance of US 192. Please refer to the following link for contact information under the Orlando Operations Section: <https://www.fdot.gov/maintenance/district5mapcontacts.shtm>. Improvements such as resurfacing, widening, signals, and turn lanes are FDOT projects and are made available on their website. For information on Osceola County State roadway projects please visit: <https://www.cflroads.com/projects/County/Osceola> for project information including: project details, schedule, project manager contact information, a summary of work to be completed, and a link to submit comments.

FDOT has roadway mowing crews to clean and maintain the roadway medians and shoulders. While the main objective is mowing these areas, these crews also pick up trash. Other state programs for roadway cleaning include the



Adopt-a-Highway Program. For FDOT Roadway Maintenance, please refer to the following link for contact information under the Orlando Operations Section: <https://www.fdot.gov/maintenance/district5mapcontacts.shtm>.

The SEATS project team is taking all comments into consideration as we move forward in this study phase. If you have any questions or comments regarding this project, please contact me by email at [Joshua.DeVries@osceola.org](mailto:Joshua.DeVries@osceola.org) or by phone at 407-742-7813. You can also contact Osceola County Transportation and Transit Director, Steven Kane, by email at [Steven.Kane@osceola.org](mailto:Steven.Kane@osceola.org) or by phone at 407-742-0513.

Thank you.

*Joshua DeVries*

Joshua DeVries  
Osceola County Transportation Planning Director

---

**From:** Shari Curley  
**Sent:** Wednesday, May 3, 2023 12:34 PM  
**To:** esgrace65@cfl.rr.com  
**Cc:** Joshua DeVries; Nathaniel T Kusel; Carolyn Fitzwilliam  
**Subject:** SEATS Comment Response



Transportation & Transit Department  
1 Courthouse Square, Suite 3100  
Kissimmee, FL 34741  
[osceola.org](http://osceola.org)  
407-742-0565

May 3, 2023

Elizabeth Grave  
[esgrace65@cfl.rr.com](mailto:esgrace65@cfl.rr.com)

**Subject: Response to Comments**  
**Southeast Area Transportation Study (SEATS)**  
Osceola County

Dear Ms. Grave,

Thank you for attending Osceola County's Southeast Area Transportation Study (SEATS) public meeting on Wednesday, March 22, 2023, and for submitting your comments. You expressed concern that new roadways will negatively impact the serenity of Lake Lissie Preseve.

Osceola County and its regional partners are working to develop traffic solutions that can safely accommodate those who live, work and visit Osceola County while minimizing negative impacts. It is a balance, and the project team is taking all comments into consideration as we move forward in this study phase.

If you have any questions or comments, please contact me by email at [Joshua.DeVries@osceola.org](mailto:Joshua.DeVries@osceola.org) or by phone at 407-742-7813. You can also contact Osceola County Transportation and Transit Director, Steven Kane, by email at [Steven.Kane@osceola.org](mailto:Steven.Kane@osceola.org) or by phone at 407-742-0513.

Thank you.

*Joshua DeVries*

Joshua DeVries  
Osceola County Transportation Planning Director

---

**From:** Shari Curley  
**Sent:** Wednesday, May 3, 2023 12:36 PM  
**To:** lindsz28@gmail.com  
**Cc:** Joshua DeVries; Nathaniel T Kusel; Carolyn Fitzwilliam  
**Subject:** SEATS Comment Response



Transportation & Transit Department  
1 Courthouse Square, Suite 3100  
Kissimmee, FL 34741  
[osceola.org](http://osceola.org)  
407-742-0565

May 3, 2023

Lindsey Dean  
[lindsz28@gmail.com](mailto:lindsz28@gmail.com)

**Subject: Response to Comments**  
**Southeast Area Transportation Study (SEATS)**  
Osceola County

Dear Ms. Dean,

Thank you for attending Osceola County's Southeast Area Transportation Study (SEATS) public meeting on Wednesday, March 22, 2023, and for submitting your comments.

We realize the frustration from drivers who are caught in the traffic congestion. That is the reason for this project, to find ways to improve traffic flow and operations on our roadways even as more and more drivers are expected to use our roads. The County Planning and Zoning offices are in charge of approving new developments and would be the department you would need to speak with regarding your concerns of too much growth. They can be contacted at [Planning@osceola.org](mailto:Planning@osceola.org) or [Zoning@osceola.org](mailto:Zoning@osceola.org).

Florida's Turnpike Enterprise is already looking into widening the Turnpike in Osceola County and adding a new interchange at Nolte Road. You can learn more about the Turnpike's projects by going to <https://floridasturnpike.com/turnpike-projects/featured-projects/#1605187495058-7e0a0c1e-878f>.

This project team is working with the developers on funding strategies to improve the infrastructure to accommodate future growth. The SEATS team is taking all comments into consideration as we move forward in this study phase.

If you have any questions or comments regarding this project, please contact me by email at [Joshua.DeVries@osceola.org](mailto:Joshua.DeVries@osceola.org) or by phone at 407-742-7813. You can also contact Osceola County Transportation and Transit Director, Steven Kane, by email at [Steven.Kane@osceola.org](mailto:Steven.Kane@osceola.org) or by phone at 407-742-0513.

Thank you.

*Joshua DeVries*



Joshua DeVries  
Osceola County Transportation Planning Director

---

**From:** Shari Curley  
**Sent:** Wednesday, May 3, 2023 12:38 PM  
**To:** nelcito523@gmail.com  
**Cc:** Joshua DeVries; Nathaniel T Kusel; Carolyn Fitzwilliam  
**Subject:** SEATS Comment Response



Transportation & Transit Department  
1 Courthouse Square, Suite 3100  
Kissimmee, FL 34741  
[osceola.org](http://osceola.org)  
407-742-0565

May 3, 2023

Nelson Marrero  
[nelcito523@gmail.com](mailto:nelcito523@gmail.com)

**Subject: Response to Comments**  
**Southeast Area Transportation Study (SEATS)**  
Osceola County

Dear Mr. Marrero,

Thank you for attending Osceola County's Southeast Area Transportation Study (SEATS) public meeting on Wednesday, March 22, 2023, and for submitting your comments. You asked that no more toll roads be built and you requested no more "sidewalks to nowhere."

The goal of the SEATS project is to understand what roads will be needed in the future to accommodate Osceola County's growing community and to develop a plan that will allow the needed improvements to be constructed in partnership with developers. This planning is still in the very early stages. However, many of the roadway improvements are planned along County-owned roadways, which are not tolled. At the same time, some of our local transportation partners, such as the Central Florida Expressway Authority, Florida's Turnpike and Florida Department of Transportation also have projects planned on their roadways within Osceola County, some of which are feasible to build only by relying on funds raised by tolls. More information on those efforts can be found by contacting the specific agency.

As roadway projects advance through the process, sidewalks are often included to allow for safe pedestrian movement in addition to vehicular movements. Separate from the roadway projects, as developments are approved, often times they are required to construct a sidewalk along their property frontage. While in the short-term, this may appear like a "sidewalk to nowhere", it is a requirement so that as neighboring properties develop, they will also connect to the previously constructed sidewalks, and eventually a whole sidewalk network is developed.

The SEATS project team is taking all comments into consideration as we move forward in this study phase, including the need for more lighting. This project is still in the study phase, however, as it moves forward, all multi-model considerations will also be factored into the design.

If you have any questions or comments regarding this project, please contact me by email at [Joshua.DeVries@osceola.org](mailto:Joshua.DeVries@osceola.org) or by phone at 407-742-7813. You can also contact Osceola County Transportation and Transit Director, Steven Kane, by email at [Steven.Kane@osceola.org](mailto:Steven.Kane@osceola.org) or by phone at 407-742-0513.

Thank you.

*Joshua DeVries*

Joshua DeVries  
Osceola County Transportation Planning Director

---

**From:** Shari Curley  
**Sent:** Wednesday, May 3, 2023 12:39 PM  
**To:** teresaj714@gmail.com  
**Cc:** Joshua DeVries; Nathaniel T Kusel; Carolyn Fitzwilliam  
**Subject:** SEATS Comment Response



Transportation & Transit Department  
1 Courthouse Square, Suite 3100  
Kissimmee, FL 34741  
[osceola.org](http://osceola.org)  
407-742-0565

May 3, 2023

Teresa Johnson  
[teresaj714@gmail.com](mailto:teresaj714@gmail.com)

**Subject: Response to Comments**  
**Southeast Area Transportation Study (SEATS)**  
Osceola County

Dear Ms. Johnson,

Thank you for attending Osceola County's Southeast Area Transportation Study (SEATS) public meeting on Wednesday, March 22, 2023, and for submitting your questions and comments. You questioned why new developments are being approved and said the current infrastructure cannot support the growth.

We realize the frustration from drivers who are caught in the traffic congestion. The goal of the SEATS project is to account for the planned growth, determine the roadways that will be needed to accommodate the growth, and then work to construct the improvements in partnership with the developments.

Osceola County is a desirable location. The Board of County Commissioners, Planning Commission, and the County staff follow the County's long-range Comprehensive Plans for land uses when reviewing applications for development and will continue to work with applicants regarding infrastructure impacts and improvements.

The SEATS project team is taking all comments into consideration as we move forward in this study phase. If you have any questions or comments regarding this project, please contact me by email at [Joshua.DeVries@osceola.org](mailto:Joshua.DeVries@osceola.org) or by phone at 407-742-7813. You can also contact Osceola County Transportation and Transit Director, Steven Kane, by email at [Steven.Kane@osceola.org](mailto:Steven.Kane@osceola.org) or by phone at 407-742-0513.

Thank you.

*Joshua DeVries*

Joshua DeVries  
Osceola County Transportation Planning Director



---

**From:** Shari Curley  
**Sent:** Wednesday, May 3, 2023 12:41 PM  
**To:** twil68.twiii@gmail.com  
**Cc:** Joshua DeVries; Nathaniel T Kusel; Carolyn Fitzwilliam  
**Subject:** SEATS Comment Response



Transportation & Transit Department  
1 Courthouse Square, Suite 3100  
Kissimmee, FL 34741  
[osceola.org](http://osceola.org)  
407-742-0565

May 3, 2023

Thomas Williams III  
[twil68.twiii@gmail.com](mailto:twil68.twiii@gmail.com)

**Subject: Response to Comments**  
**Southeast Area Transportation Study (SEATS)**  
Osceola County

Dear Mr. Williams,

Thank you for attending Osceola County's Southeast Area Transportation Study (SEATS) public meeting on Wednesday, March 22, 2023, and for submitting your questions and comments.

The SEATS project team is looking at all options to improve traffic flow and operations on the roadways in southeastern Osceola County. The team is focusing on widening the existing roadways to achieve that goal. Currently, there are no plans to build roads across any lakes. Also, if any right of way acquisition is needed, the County will reach out to the impacted property owners to discuss it, at a later date. Right now, this project is only in the study phase.

The County is in coordination with the local developers to help fund roadway projects that will result from this study. However, specific funding mechanisms are not yet in place for future projects that may or may not include secondary feeder roads that would connect to any new or expanding corridors.

The project team is taking all comments into consideration as we move forward in this study phase. If you have any questions or comments, please contact me by email at [Joshua.DeVries@osceola.org](mailto:Joshua.DeVries@osceola.org) or by phone at 407-742-7813. You can also contact Osceola County Transportation and Transit Director, Steven Kane, by email at [Steven.Kane@osceola.org](mailto:Steven.Kane@osceola.org) or by phone at 407-742-0513.

Thank you.

*Joshua DeVries*

Joshua DeVries  
Osceola County Transportation Planning Director