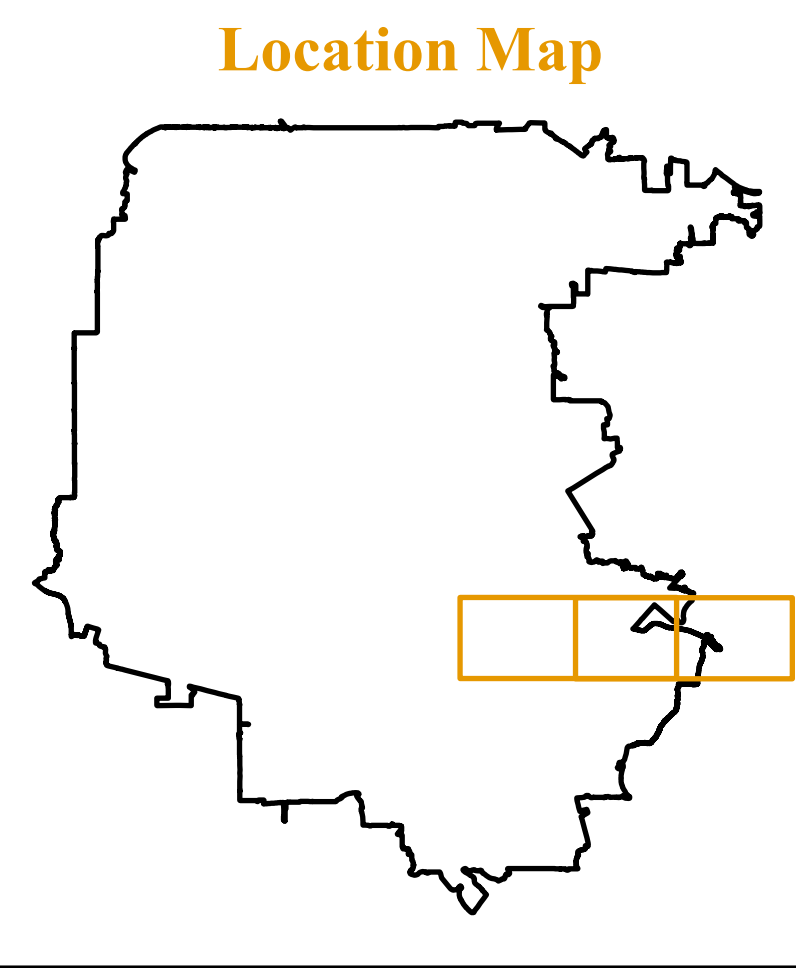
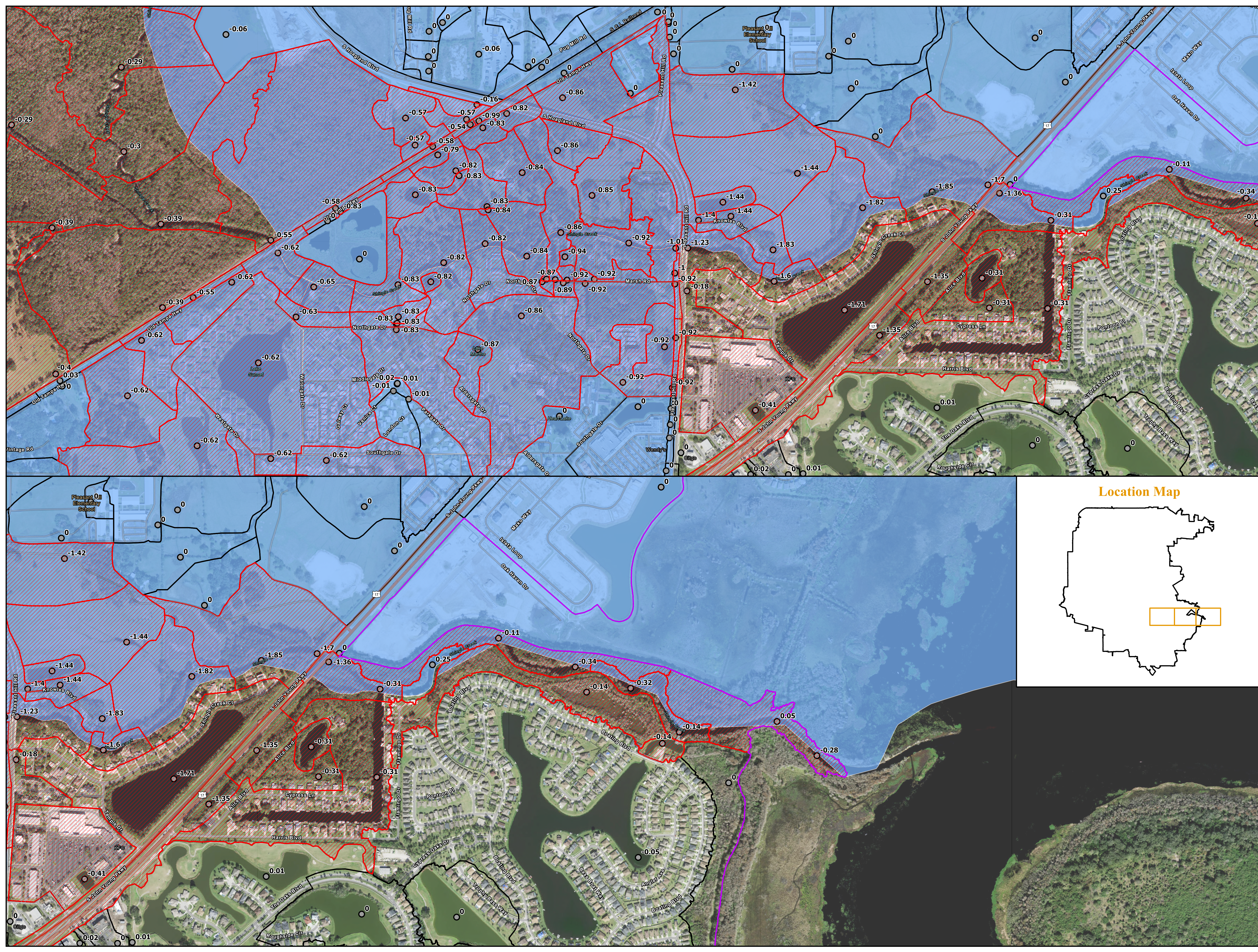


- Legend**
- Watershed Boundary
  - Model Basins
  - Model Basins w/ Stage Decreases of 0.1ft or more
  - Model Nodes
  - Low to Moderate Income Population by Block
  - Group (>=51% of households)



**Note:** Node labels present the stage decreases that the shoaling removal and channel widening provide compared to existing conditions.

Sources:  
Aerial: Osceola County, 2023  
Low to Moderate Income: HUD, 2024

Figure  
1

**LMI Map**

Shingle Creek Basin Shoaling Removal & Channel Widening  
Osceola County, FL